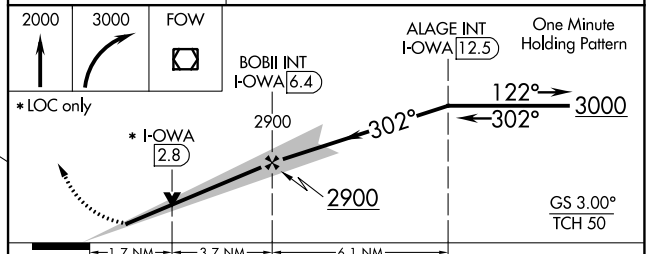
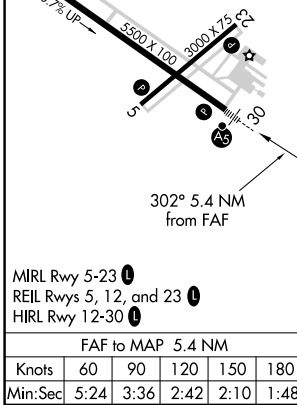
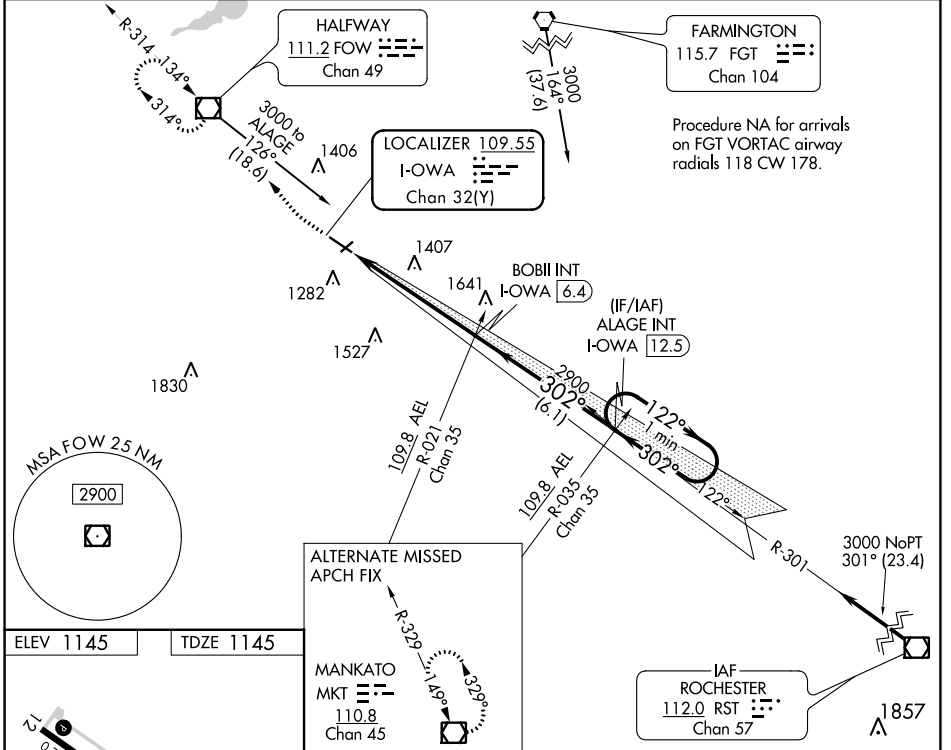


LOC/DME I-OWA <b>109.55</b> Chan 32(Y)	APP CRS <b>302°</b>	Rwy Idg <b>5500</b> TDZE <b>1145</b> Apt Elev <b>1145</b>
--	------------------------	---

# ILS or LOC RWY 30

OWATONNA DEGNER RGNL (OWA)

<p><b>▼</b> When local altimeter setting not received, use Faribault altimeter setting and increase all DA 41 feet and all MDA 60 feet. <b>▲</b> NA Increase S-LOC 30 Cats C/D visibility to 1½ mile and Circling Cat C visibility to 1% and Cat D Circling visibility to 2½.</p>	<p>MALSR </p>	<p>MISSED APPROACH Climb to 2000 then climbing right turn to 3000 direct FOW VOR/DME and hold.</p>
<p>AWOS-3 <b>128.325</b></p>	<p>ROCHESTER APP CON * <b>119.8 251.125</b></p>	<p>UNICOM <b>122.7</b> (CTAF) </p>



CATEGORY	A	B	C	D
S-ILS 30	1345-½		200 (200-½)	
S-LOC 30	1740-½ 595 (600-½)		1740-¼ 595 (600-¼)	
<input checked="" type="checkbox"/> CIRCLING	1740-1 595 (600-1)		1740-¾ 1880-2¼ 595 (600-¾) 735 (800-2¼)	

NC-1, 23 MAR 2023 to 20 APR 2023

NC-1, 23 MAR 2023 to 20 APR 2023