

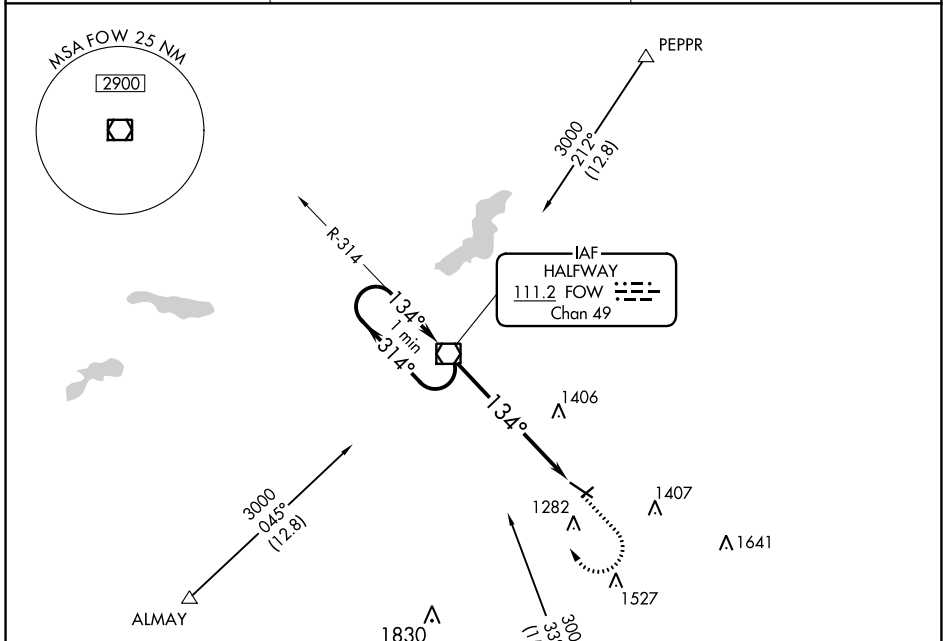
VOR/DME FOW	APP CRS	Rwy Idg	5500
111.2	134°	TDZE	1127
Chan 49		Apt Elev	1145

VOR RWY 12

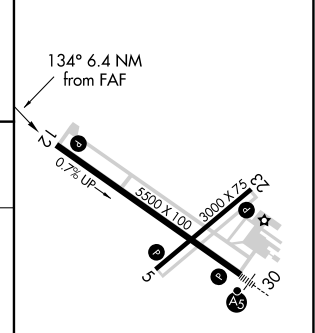
OWATONNA DEGNER RGNL (OWA)

NA MISSED APPROACH Climb to 2000 then climbing right turn to 3000 direct FOW VOR/DME and hold.

AWOS-3 128.325	ROCHESTER APP CON * 119.8 251.125	UNICOM 122.7 (CTAF) 0
--------------------------	---	---------------------------------



ELEV 1145	TDZE 1127
-----------	-----------



VGSI and descent angles not coincident (VGSI Angle 3.00/TCH 40).
 One Minute Holding Pattern
 FOW VOR/DME
 3000 ← 314° → 134° →
 2.74° TCH 50
 6.4 NM

MIRL Rwy 5-23 0	
REIL Rwys 5, 12, and 23 0	
HIRL Rwy 12-30 0	
FAF to MAP 6.4 NM	
Knots	60 90 120 150 180
Min:Sec	6:24 4:16 3:12 2:34 2:08

CATEGORY	A	B	C	D
S-12	1560-1	433 (500-1)	1560-1¼ 433 (500-1¼)	1560-1½ 433 (500-1½)
C CIRCLING	1640-1 495 (500-1)	1700-1 555 (600-1)	1720-1½ 575 (600-1½)	1880-2¼ 735 (800-2¼)

NC-1, 23 MAR 2023 to 20 APR 2023

NC-1, 23 MAR 2023 to 20 APR 2023