

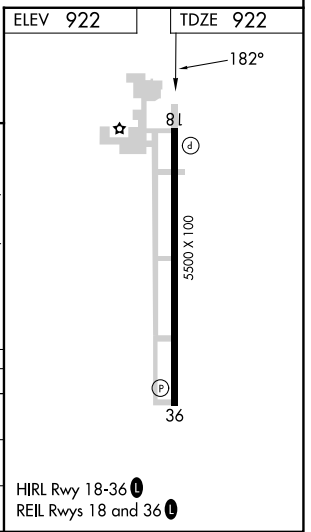
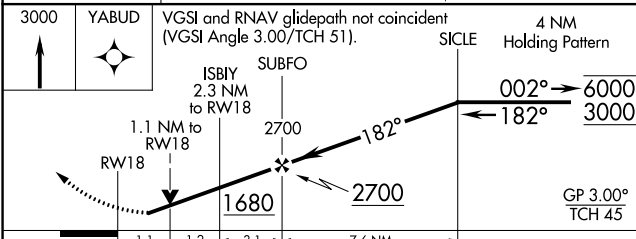
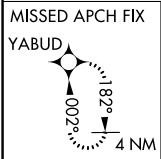
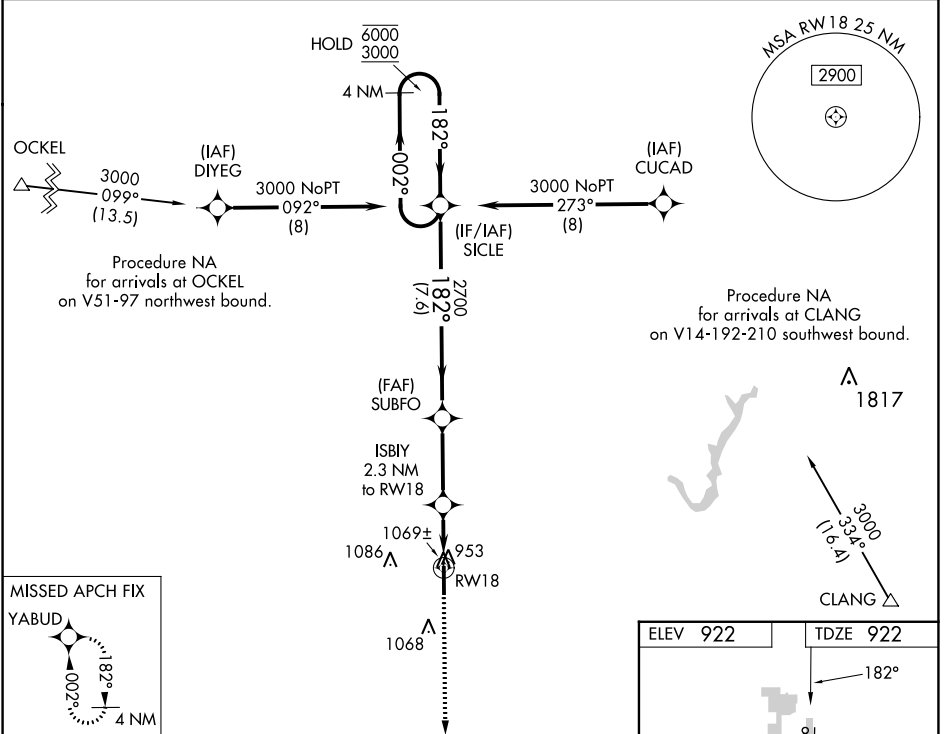
APP CRS	Rwy Idg	5500
182°	TDZE	922
	Apt Elev	922

RNAV (GPS) RWY 18

INDIANAPOLIS EXEC (TYQ)

RNP APCH - GPS.		MISSED APPROACH: Climb to 3000 direct YABUD and hold.	
<p>▼ Helicopter visibility reduction below 3/4 SM NA. For uncompensated Baro-VNAV systems, LNAV/VNAV NA below -16° C or above 54° C.</p>			

AWOS-3PT 120.725	INDIANAPOLIS APP CON 124.65 127.15 317.8	CLNC DEL 118.175	UNICOM 123.05 (CTAF)
----------------------------	--	----------------------------	--------------------------------



CATEGORY	A	B	C	D
LNAV/VNAV DA	1216-7/8		294 (300-7/8)	
LNAV MDA	1320-1 398 (400-1)		1320-1 3/8 398 (400-1 1/8)	
CIRCLING	1360-1 438 (500-1)	1380-1 458 (500-1)	1440-1 1/2 518 (600-1 1/2)	1480-2 558 (600-2)

EC-2, 23 MAR 2023 to 20 APR 2023

EC-2, 23 MAR 2023 to 20 APR 2023