

WAAS CH 56436 W20A	APP CRS 199°	Rwy Idg 6506 TDZE 303 Apt Elev 303
--	------------------------	---

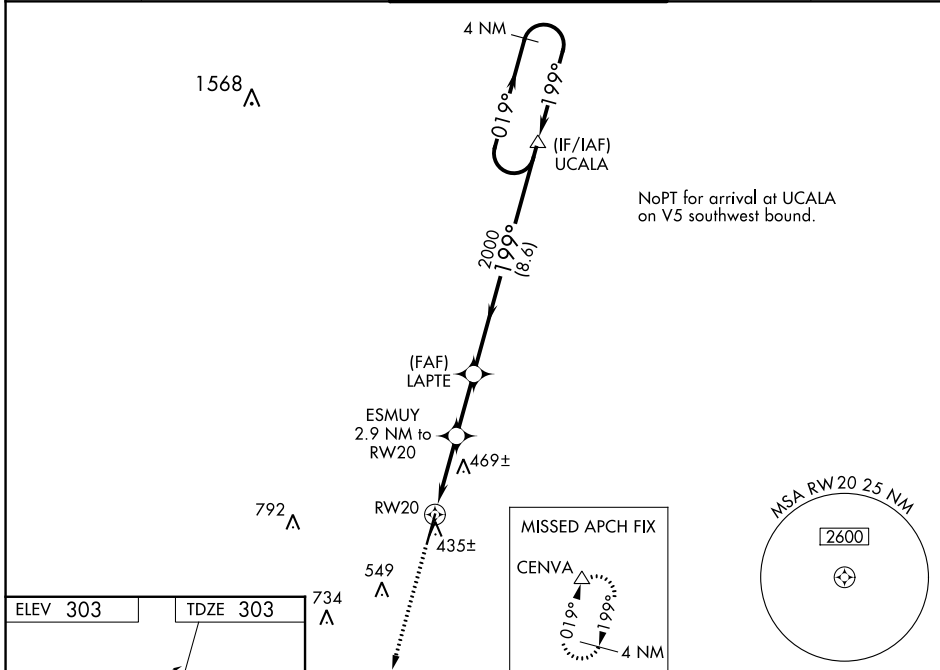
RNAV (GPS) RWY 20

HEART OF GEORGIA RGNL (EZM)

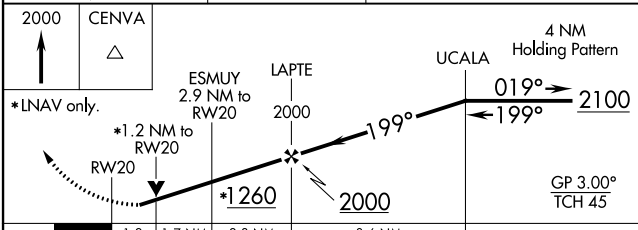
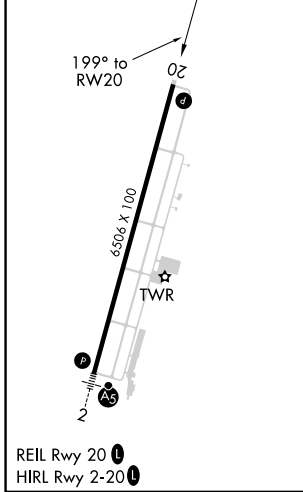
⚠ Baro-VNAV NA when using Dublin altimeter setting. For uncompensated Baro-VNAV systems, LNAV/VNAV NA below -15°C (5°F) or above 54°C (130°F). When local altimeter setting not received, use Dublin altimeter setting and increase all DA 52 feet and all MDA 60 feet; increase LPV all Cats and LNAV Cat C/D visibility 1/8 mile and LNAV/VNAV all Cats and Circling Cat C visibility 1/4 mile. DME/DME RNP-0.3 NA. VDP NA with Dublin altimeter setting. Helicopter visibility reduction below 3/4 SM NA.

MISSED APPROACH:
Climb to 2000 direct CENVA and hold.

ATIS 119.425	JACKSONVILLE CENTER 127.575 269.025	HEART OF GEORGIA TOWER ★ 124.55 (CTAF) 0	GND CON 121.175	UNICOM 122.95
------------------------	---	--	---------------------------	-------------------------



ELEV 303	TDZE 303
----------	----------



CATEGORY	A	B	C	D
LPV DA	602-1 299 (300-1)			
LNAV/VNAV DA	722-1 3/8 417 (500-1 3/8)			
LNAV MDA	720-1	417 (500-1)	720-1 1/4	417 (500-1 1/4)
C CIRCLING	760-1 457 (500-1)	820-1 517 (600-1)	900-1 1/2 597 (600-1 1/2)	900-2 597 (600-2)

SE-4, 23 MAR 2023 to 20 APR 2023

SE-4, 23 MAR 2023 to 20 APR 2023