

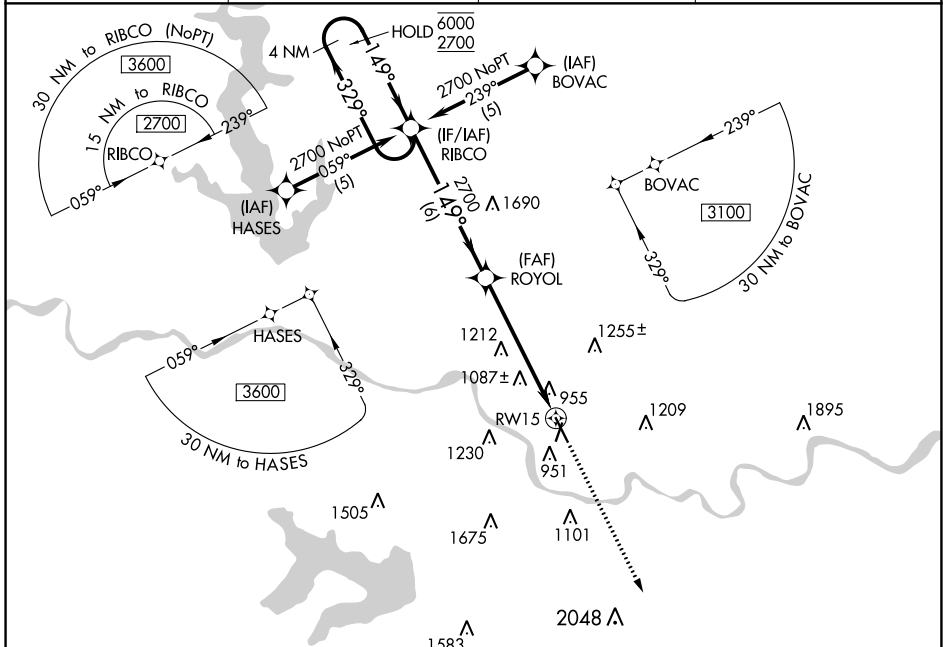
APP CRS <b>149°</b>	Rwy Idg <b>5700</b> TDZE <b>831</b> Apt Elev <b>833</b>
------------------------	---

# RNAV (GPS) RWY 15

LAWRENCE RGNL (LWC)

RNP APCH.	MISSED APPROACH: Climb to 3100 direct GOLEY and hold.
Rwy 15 Helicopter visibility reduction below 3/4 SM NA.	

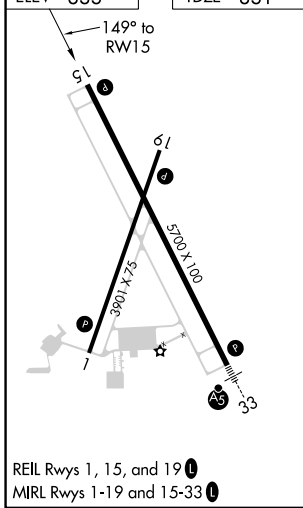
ASOS <b>121.225</b>	KANSAS CITY CENTER <b>123.8 343.7</b>	CLNC DEL <b>121.825</b>	UNICOM <b>123.0 (CTAF) 0</b>
------------------------	--	----------------------------	---------------------------------



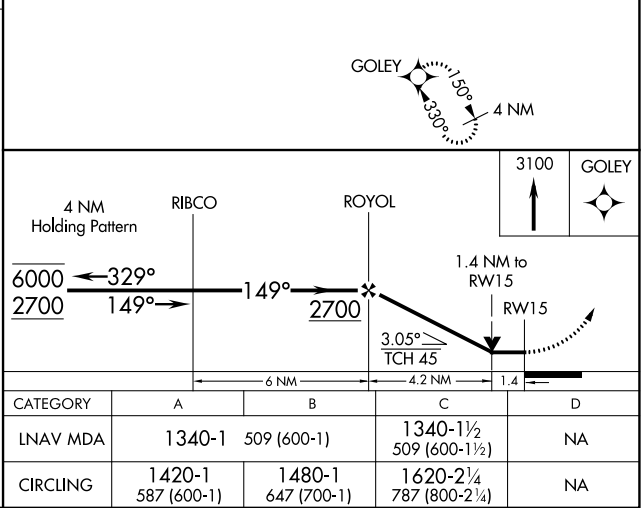
NC-2, 23 MAR 2023 to 20 APR 2023

NC-2, 23 MAR 2023 to 20 APR 2023

ELEV <b>833</b>	TDZE <b>831</b>
-----------------	-----------------



REIL Rwy 1, 15, and 19   
MIRL Rwy 1-19 and 15-33



CATEGORY	A	B	C	D
LNAV MDA	1340-1	509 (600-1)	1340-1½ 509 (600-1½)	NA
CIRCLING	1420-1 587 (600-1)	1480-1 647 (700-1)	1620-2¼ 787 (800-2¼)	NA