

WAAS CH 53711 W26A	APP CRS 256°	Rwy Idg TDZE 24 Apt Elev 26	4997
--	------------------------	---	-------------

RNAV (GPS) RWY 26

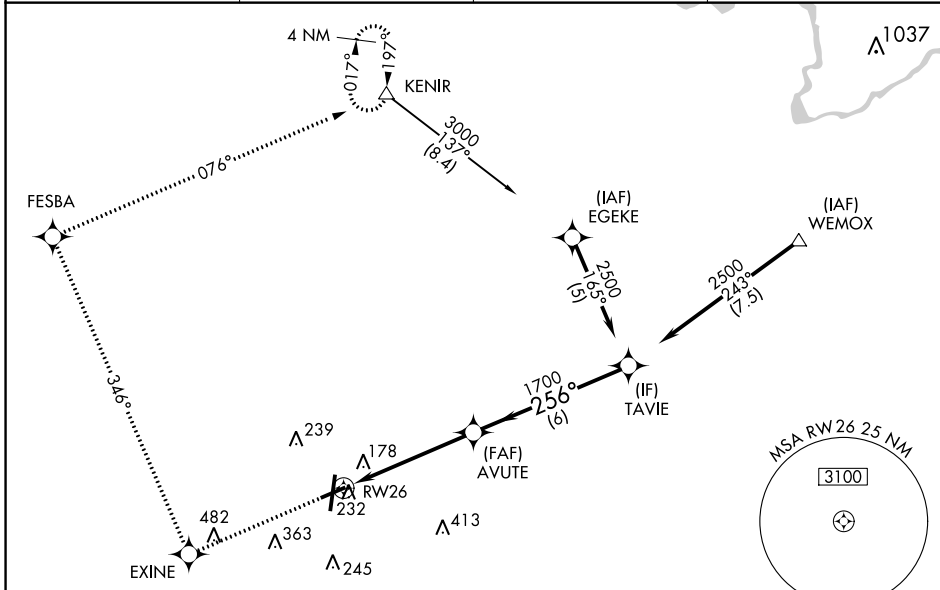
PITT-GREENVILLE (PGV)

RNP APCH - GPS.

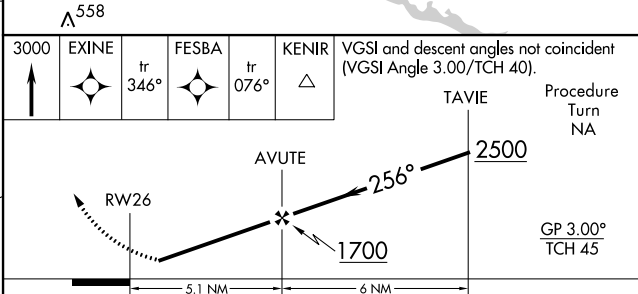
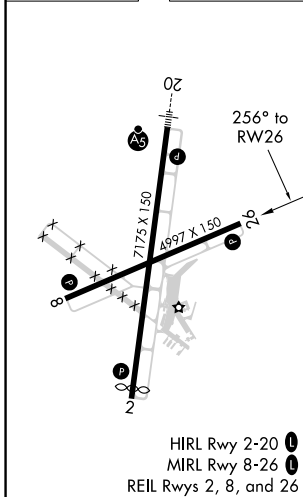
▼ Baro-VNAV NA when using Washington altimeter setting. For uncompensated Baro-VNAV systems, LNAV/VNAV NA below -15°C or above 48°C. Rwy 26 helicopter visibility reduction below 3/4 SM NA. When local altimeter setting not received use Washington altimeter setting and increase LPV DA to 376 feet, visibility all Cats 1/8 SM; increase LNAV/VNAV DA to 505, visibility all Cats 1/8 SM; increase all MDAs 60 feet, LNAV visibility Cat C and D and Circling Cat D 1/4 SM.

MISSED APPROACH: Climb to 3000 direct EXINE and via 346° track to FESBA and via 076° track to KENIR and hold.

AWOS-3 128.425	WASHINGTON CENTER 123.85 279.65	CINC DEL 122.35	UNICOM 122.8 (CTAF)
--------------------------	---	---------------------------	-------------------------------



ELEV 26	D	TDZE 24
---------	----------	---------



CATEGORY	A	B	C	D
LPV DA	335-7/8		311 (400-7/8)	
LNAV/VNAV DA	464-1 1/4		440 (500-1 1/4)	
LNAV MDA	520-1	496 (500-1)	520-1 3/8	496 (500-1 3/8)
CIRCLING	600-1 574 (600-1)	620-1 594 (600-1)	700-2 674 (700-2)	800-2 1/2 774 (800-2 1/2)

SE-2, 23 MAR 2023 to 20 APR 2023

SE-2, 23 MAR 2023 to 20 APR 2023