

MILLERSBURG, OHIO

AL-5561 (FAA)

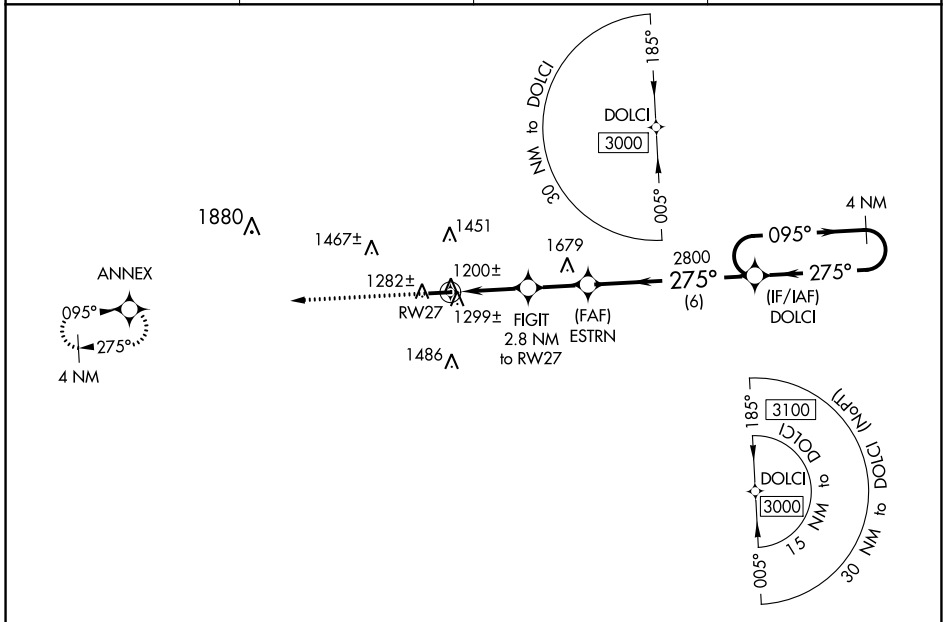
22363

WAAS CH 57937 W27A	APP CRS 275°	Rwy Idg 4400 TDZE 1215 Apt Elev 1227
----------------------------------------	------------------------	-----------------------------------------------------------------

RNAV (GPS) RWY 27

HOLMES COUNTY (10G)

RNP APCH - GPS.			MISSED APPROACH: Climb to 3000 direct ANNEX and hold.
AWOS-3 128.325	INDIANAPOLIS CENTER 124.45 370.9	UNICOM 123.0 (CTAF)	



EC-2, 23 MAR 2023 to 20 APR 2023

EC-2, 23 MAR 2023 to 20 APR 2023

ELEV 1227	TDZE 1215				
		3000	ANNEX	VGSI and descent angles not coincident (VGSI Angle 3.00/TCH 25).	
		4 NM Holding Pattern			
CATEGORY	A	B	C	D	
LP MDA	1480-1		265 (300-1)		
LNAV MDA	1560-1		345 (400-1)		
<input checked="" type="checkbox"/> CIRCLING	1760-1	533 (600-1)	1840-1¾ 613 (700-1¾)	1860-2 633 (700-2)	

MILLERSBURG, OHIO
Orig-C 29DEC22

40°32'N-81°57'W

RNAV (GPS) RWY 27

HOLMES COUNTY (10G)