

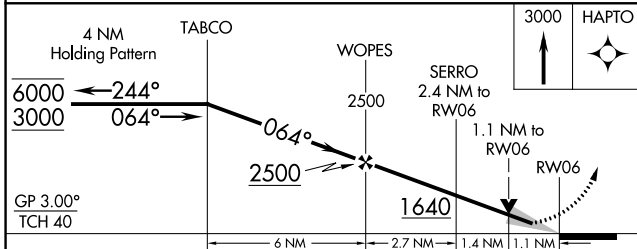
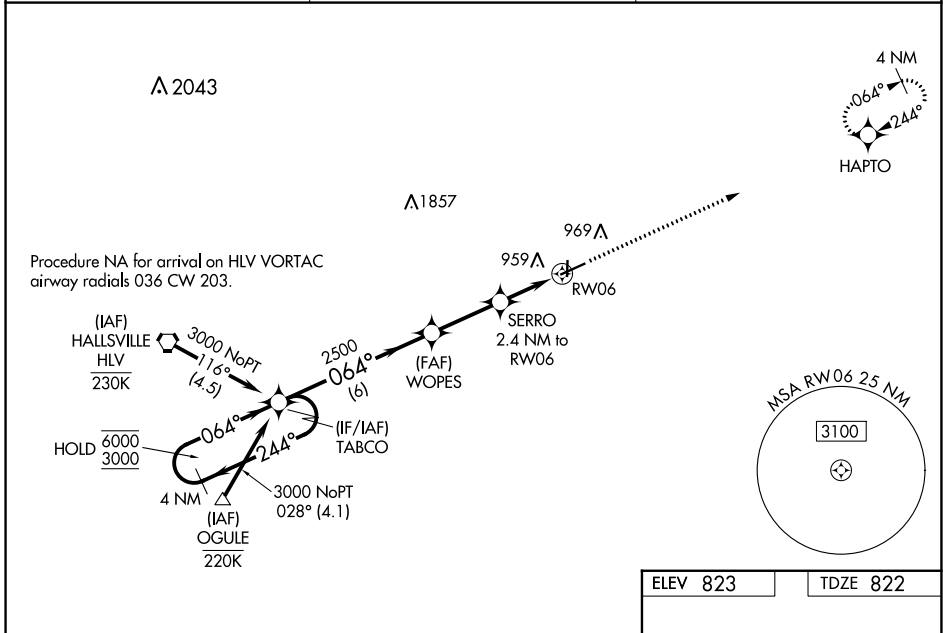
| | | | |
|--|------------------------|-----------------------------|---|
| WAAS CH 97423 W06A | APP CRS 064° | Rwy Idg TDZE Apt Elev | 5301 822 823 |
|--|------------------------|-----------------------------|---|

RNAV (GPS) RWY 6

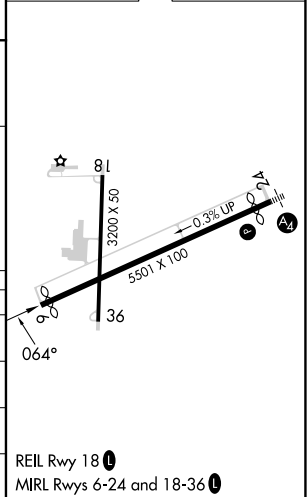
MEXICO MEML (MYJ)

| | |
|---|---|
| RNP APCH - GPS. | <p>MISSED APPROACH: Climb to 3000 direct HAPTO and hold.</p> |
| <p>NA Baro-VNAV and VDP NA when using Columbia altimeter setting. For uncompensated Baro-VNAV systems, LNAV/VNAV NA below -16°C or above 54°C. When local altimeter setting not received, use Columbia altimeter setting: increase LPV DA to 1146 feet and visibilities ¼ SM; increase LNAV/VNAV DA to 1167 feet and visibilities ½ SM; increase all MDAs 80 feet and LNAV visibility Cat C ¾ SM and Circling visibility Cat C ½ SM.</p> | |

| | | |
|----------------------------|--------------------------------|-----------------------|
| AWOS-3PT 120.575 | MIZU APP CON 124.375 | CTAF 122.90 |
|----------------------------|--------------------------------|-----------------------|



| | |
|----------|----------|
| ELEV 823 | TDZE 822 |
|----------|----------|



| CATEGORY | A | B | C | D |
|--------------|--------|-------------|-------------------------|----|
| LPV DA | 1072-¾ | 250 (300-¾) | | NA |
| LNAV/VNAV DA | 1093-⅞ | 271 (300-⅞) | | NA |
| LNAV MDA | 1200-1 | 378 (400-1) | | NA |
| CIRCLING | 1280-1 | 457 (500-1) | 1420-1½ 597 (600-1½) | NA |

NC-3, 23 MAR 2023 to 20 APR 2023

NC-3, 23 MAR 2023 to 20 APR 2023