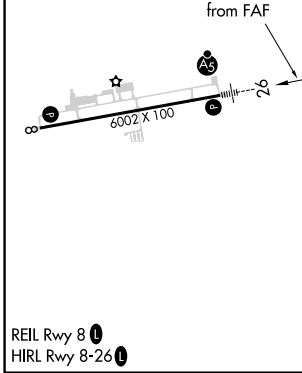
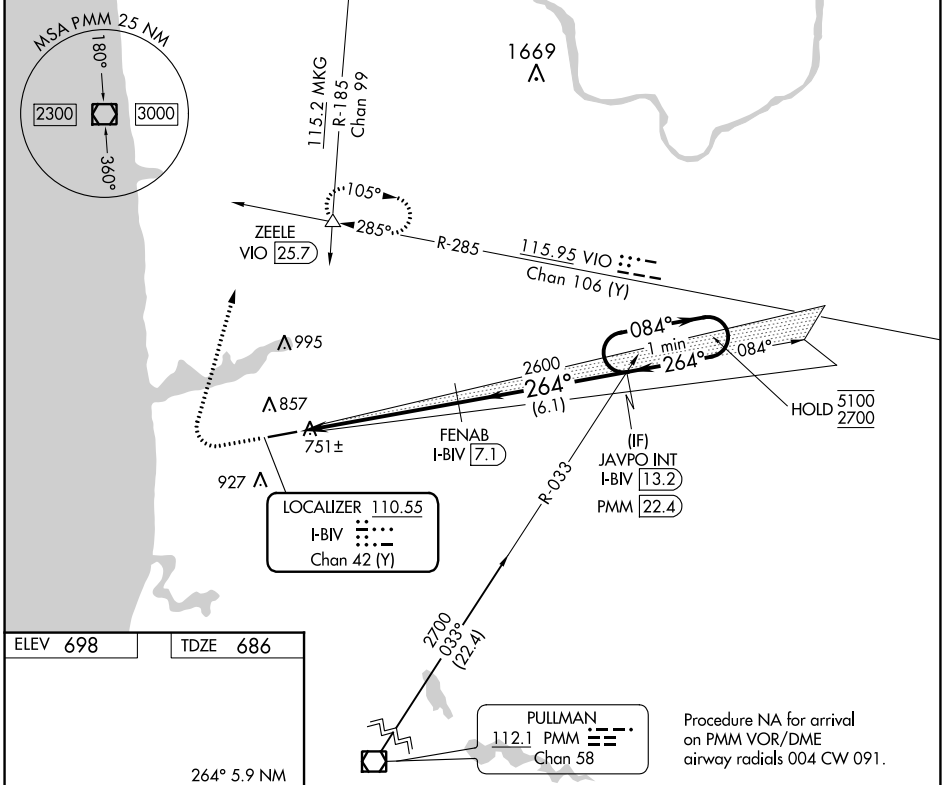


LOC/DME I-BIV 110.55 Chan 42 (Y)	APP CRS 264°	Rwy Idg 6002 TDZE 686 Apt Elev 698
---	------------------------	--

ILS or LOC RWY 26

WEST MICHIGAN RGNL (BIV)

DME required. NA		MALSR A5	MISSED APPROACH: Climb to 1500 then climbing right turn to 2600 on heading 020° and VIO VOR/DME R-285 to ZEELE/VIO 25.7 DME and hold.	
ASOS 119.025	GREAT LAKES APP CON* 133.825 290.35	CLNC DEL 123.95	UNICOM 123.05 (CTAF)	



1500	2600	ZEELE VIO R-285	FENAB I-BIV 7.1	JAVPO INT I-BIV 13.2	One Minute Holding Pattern
*LOC only	hdg 020°		2600	264°	5100 2700
	*I-BIV 2.1			084°	GS 3.00° TCH 32
	I-BIV 1.2			264°	
		0.9 NM	5 NM	6.1 NM	
CATEGORY	A	B	C	D	
S-ILS 26		886-1/2 200 (200-1/2)		NA	
S-LOC 26		1020-1/2 334 (400-1/2)		NA	
CIRCLING	1200-1 502 (600-1)	1240-1 542 (600-1)	1240-1 1/2 542 (600-1 1/2)	NA	

EC-1, 23 MAR 2023 to 20 APR 2023

EC-1, 23 MAR 2023 to 20 APR 2023