

VOR/DME OXI 115.6 Chan 103	APP CRS 261°	Rwy Idg TDZE 796 Apt Elev 800	4103
--	------------------------	---	-------------

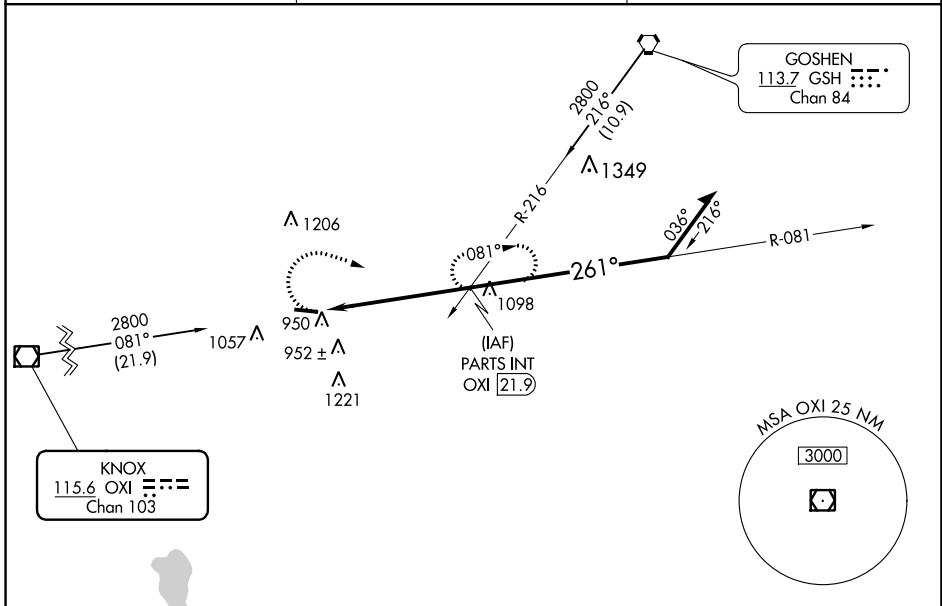
VOR RWY 28

PLYMOUTH MUNI (C65)

▼ Rwy 28 helicopter visibility reduction below 1 SM NA. When local altimeter setting not received, use South Bend altimeter setting and increase all MDAs 60 feet and S-28 visibility Cat C 1/8 SM, and Circling visibility Cat C 1/4 SM. Straight-in Rwy 28 NA at night, Circling Rwy 28 NA at night.

MISSED APPROACH: Climbing right turn to 2800 on heading 140° and OXI VOR/DME R-081 direct PARTS INT/OXI 21.9 DME and hold.

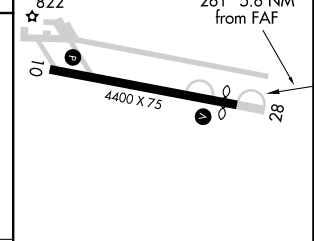
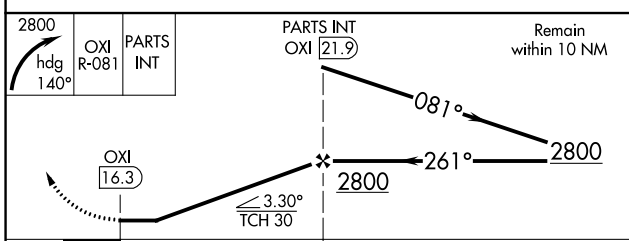
AWOS-3 133.025	SOUTH BEND APP CON * 132.05 257.8	UNICOM 122.975 (CTAF) 📻
--------------------------	---	--



EC-2, 23 MAR 2023 to 20 APR 2023

EC-2, 23 MAR 2023 to 20 APR 2023

ELEV 800	TDZE 796
-----------------	-----------------



CATEGORY	A	B	C	D
S-28	1400-1	604 (600-1)	1400-1 3/4 604 (600-1 3/4)	NA
📻 CIRCLING	1400-1	600 (600-1)	1540-2 740 (800-2)	NA

MIRL Rwy 10-28 **📻**
REIL Rwys 10 and 28 **📻**

FAF to MAP 5.6 NM

Knots	60	90	120	150	180
Min:Sec	5:36	3:44	2:48	2:14	1:52