

APP CRS	Rwy Idg	<b>2987</b>
<b>077°</b>	TDZE	<b>480</b>
	Apt Elev	<b>480</b>

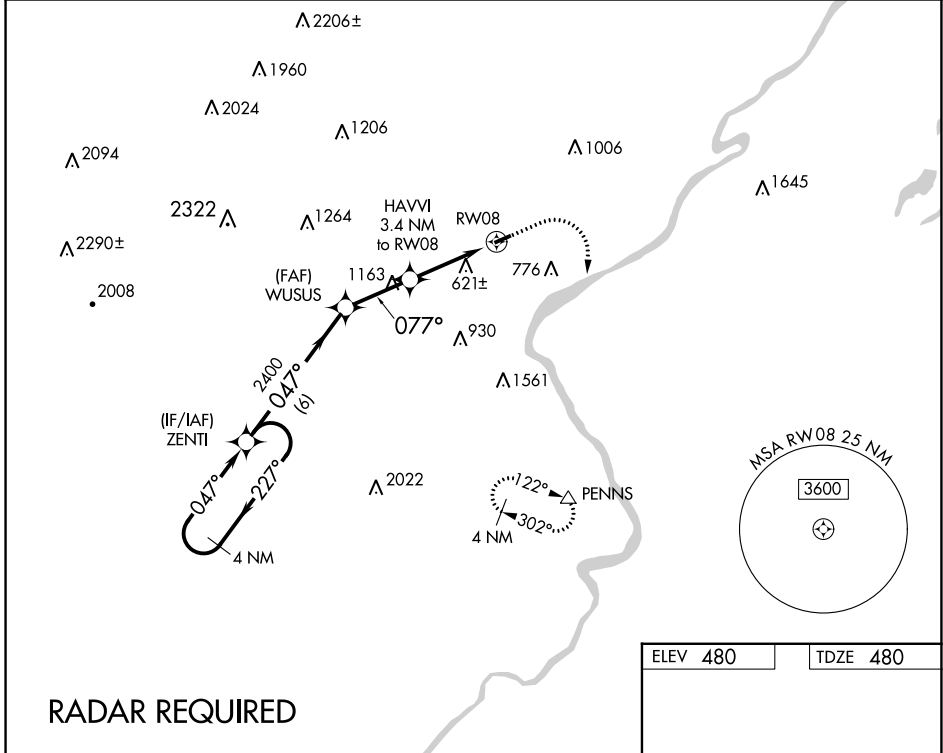
# RNAV (GPS) RWY 8

STROUDSBURG-POCONO (N53)

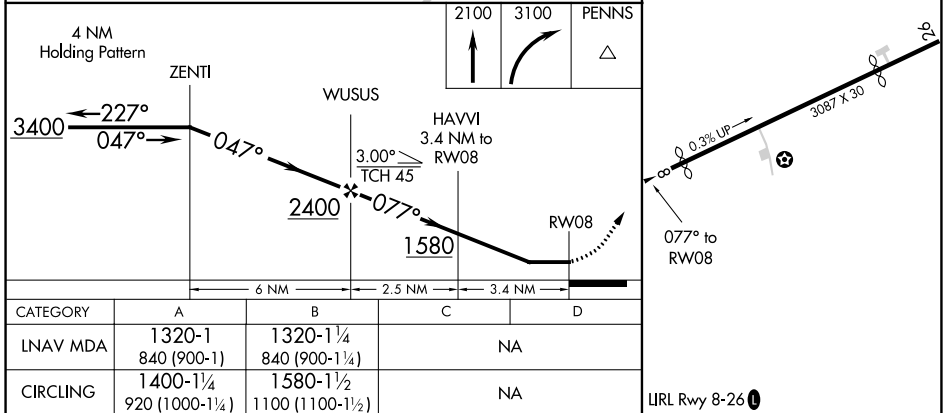
**NA** Procedure NA at night. DME/DME RNP-0.3 NA. Visibility reduction by helicopters NA. Obtain local altimeter setting on CTAF; when not received, use Allentown altimeter setting and increase all MDA 80 feet, and LNAV visibility Cat A ¼ mile.

**MISSED APPROACH:** Climb to 2100 then climbing right turn to 3100 direct PENNS and hold.

ALLENTOWN APP CON <b>119.65 124.45 351.8</b>	UNICOM <b>123.0 (CTAF) 0</b>
---	---------------------------------



**RADAR REQUIRED**



NE-4, 23 MAR 2023 to 20 APR 2023

NE-4, 23 MAR 2023 to 20 APR 2023