

WAAS CH 56615 W15A	APP CRS 155°	Rwy Ldg TDZE Apt Elev	5900 1403 1403
--	------------------------	-----------------------------	---

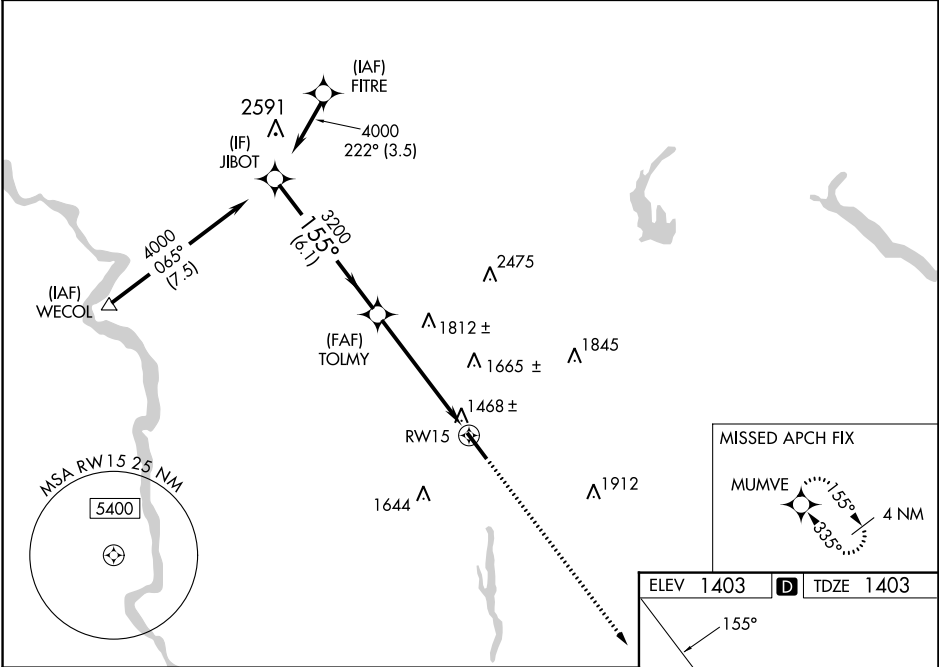
RNAV (GPS) RWY 15

SULLIVAN COUNTY INTL (MSV)

⚠ Baro-VNAV NA when using Newburgh altimeter setting. For uncompensated Baro-VNAV systems, LNAV/VNAV NA below -17°C (2°F) or above 46°C (114°F). DME/DME RNP-0.3 NA. Helicopter visibility reduction below 3/4 SM NA. When local altimeter setting not received, use Newburgh altimeter setting and increase LPV DA to 1858 and visibility all Cats 1/2 SM, LNAV/VNAV DA to 2077 and visibility Cat A/B/C 1/4 SM; increase all MDA 220 feet and LNAV Cat B visibility 1/4 SM, Cat C/D visibility 3/4 SM, and Circling visibility Cat C 3/4 SM, Cat D 1/2 SM.

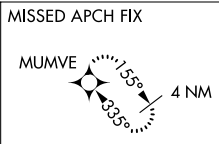
MISSED APPROACH:
Climb to 3300 direct MUMVE and hold.

AWOS-3PT 124.725	NEW YORK APP CON 132.75 363.1	CLNC DEL 121.6	UNICOM 122.8 (CTAF) 0
----------------------------	---	--------------------------	---------------------------------

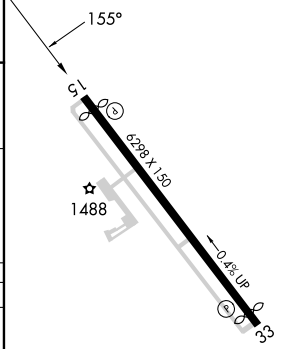
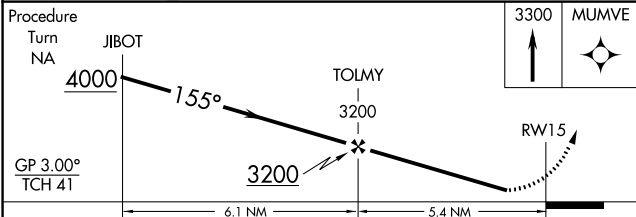


NE-2, 23 MAR 2023 to 20 APR 2023

NE-2, 23 MAR 2023 to 20 APR 2023



ELEV 1403	D TDZE 1403
-----------	--------------------



CATEGORY	A	B	C	D
LPV DA	1653-1		250 (300-1)	
LNAV/VNAV DA	1872-1 3/4		469 (500-1 3/4)	
LNAV MDA	1980-1	577 (600-1)	1980-1 1/2 577 (600-1 1/2)	1980-1 3/4 577 (600-1 3/4)
CIRCLING	1980-1	577 (600-1)	2020-1 3/4 617 (700-1 3/4)	2180-2 1/2 777 (800-2 1/2)

REIL Rwy 15 and 33 **0**
HIRL Rwy 15-33 **0**