

WAAS CH <b>99318</b> <b>W23A</b>	APP CRS <b>229°</b>	Rwy Idg <b>4508</b> TDZE <b>195</b> Apt Elev <b>195</b>
--	------------------------	---

# RNAV (GPS) RWY 23

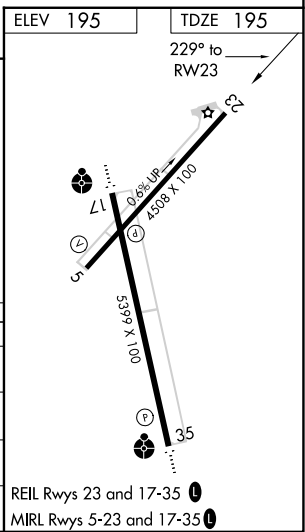
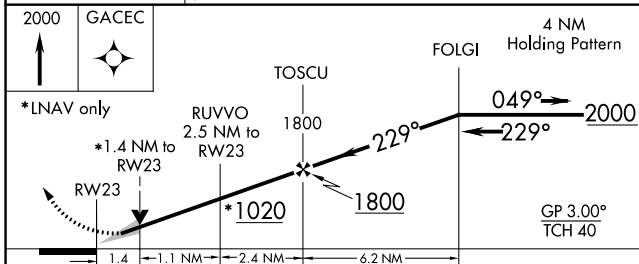
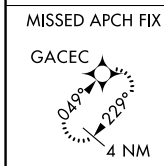
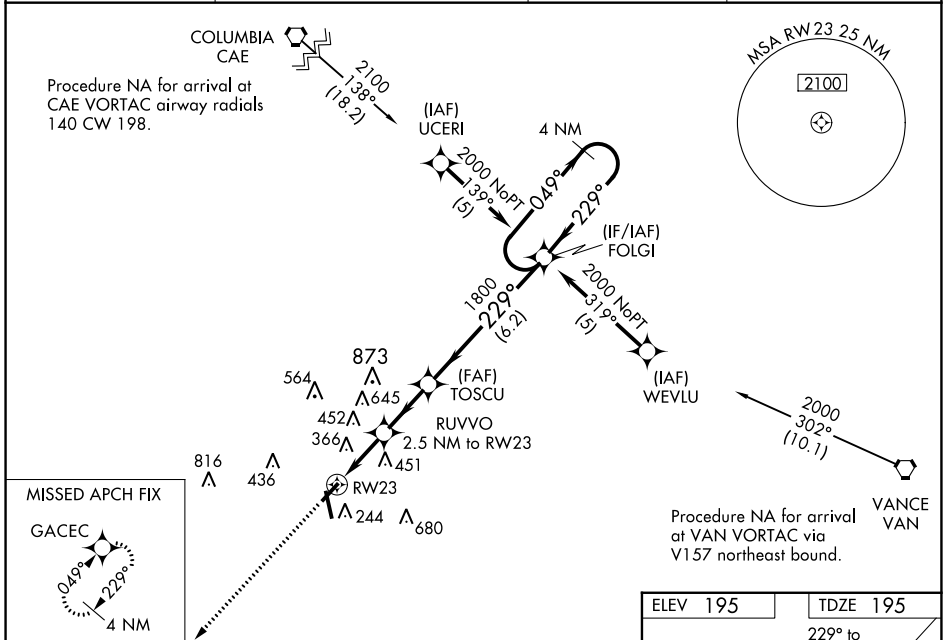
ORANGEBURG MUNI (OGB)

RNP APCH-GPS.

▼ Baro-VNAV and VDP NA when using Columbia Metro altimeter setting. For uncompensated Baro-VNAV systems, LNAV/VNAV NA below -15°C or above 54°C. When local altimeter setting not received, use Columbia Metro altimeter setting and increase LPV DA to 538 feet and all visibilities ¼ SM, increase LNAV/VNAV DA to 885 feet and all visibilities ¼ SM, increase all MDAs 80 feet and LNAV visibility Cat C/D ¼ SM, and Circling visibility Cat C/D ¼ SM. Circling Rwy 17 NA night.

MISSED APPROACH: Climb to 2000 direct GACEC and hold.

ASOS <b>118.525</b>	COLUMBIA APP CON <b>124.15 338.2</b>	GCO <b>125.675</b>	UNICOM <b>122.7 (CTAF) 0</b>
------------------------	---	-----------------------	---------------------------------



CATEGORY	A	B	C	D
LPV DA		459-7/8	264 (300-7/8)	
LNAV/VNAV DA		806-1 3/4	611 (700-1 3/4)	
LNAV MDA	680-1	485 (500-1)	680-1 3/8	485 (500-1 3/8)
CIRCLING	720-1 525 (600-1)	800-1 605 (700-1)	1040-2 1/2 845 (900-2 1/2)	1040-2 3/4 845 (900-2 3/4)

SE-2, 23 MAR 2023 to 20 APR 2023

SE-2, 23 MAR 2023 to 20 APR 2023