

WAAS CH <b>97418</b> <b>W35A</b>	APP CRS <b>354°</b>	Rwy Idg TDZE Apt Elev	<b>5399</b> <b>186</b> <b>195</b>
--	------------------------	-----------------------------	---

# RNAV (GPS) RWY 35

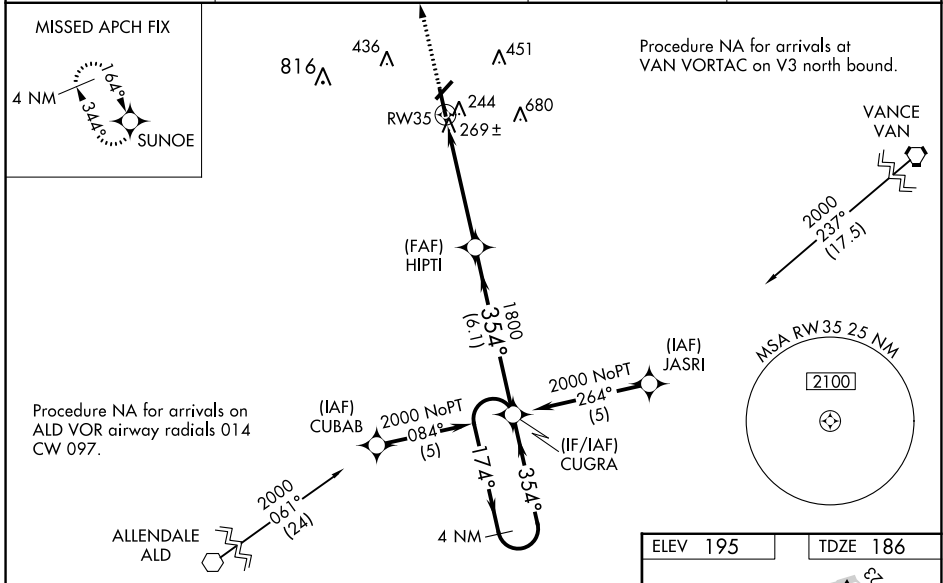
ORANGEBURG MUNI (OGB)

RNP APCH-GPS.

For uncompensated Baro-VNAV systems, LNAV/VNAV NA below -15°C or above 54°C. Baro-VNAV and VDP NA when using Columbia Metro altimeter setting. When local altimeter setting not received, use Columbia Metro altimeter setting and increase LPV DA to 515 feet and all visibilities ½ SM, increase LNAV/VNAV DA to 618 feet and all visibilities ¼ SM, increase all MDAs 80 feet and LNAV visibility Cat C/D ¼ SM, and Circling visibility Cat C/D ¼ SM. For inop ALS, increase Cat A/B visibility to 1 SM. For inop ALS when using Columbia Metro altimeter setting, increase LPV Cat A/B visibility to 1 ½ SM, and LNAV/VNAV Cat A/B to 1 ½ SM. Circling Rwy 17 NA at night. Inop table does not apply to LPV.

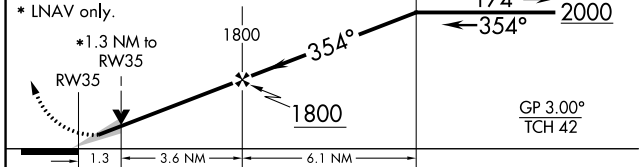
ODALS: MISSED APPROACH: Climb to 2000 direct SUNOE and hold.

ASOS <b>118.525</b>	COLUMBIA APP CON <b>124.15 338.2</b>	GCO <b>125.675</b>	UNICOM <b>122.7 (CTAF)</b>
------------------------	---	-----------------------	-------------------------------

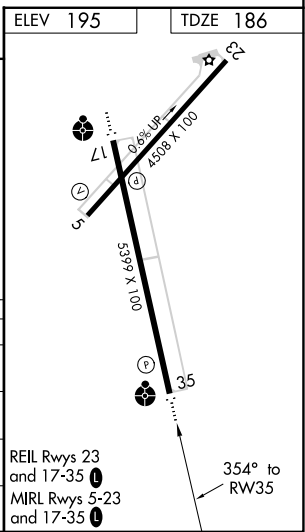


2000 SUNOE VGSI and RNAV glidepath not coincident (VGSI Angle 3.00/TCH 37). 4 NM Holding Pattern

CUGRA



CATEGORY	A	B	C	D
LPV DA		436-¾	250 (300-¾)	
LNAV/VNAV DA		539-7/8	353 (400-7/8)	
LNAV MDA	640-¾	454 (500-¾)	640-1 1/8	454 (500-1 1/8)
CIRCLING	720-1 525 (600-1)	800-1 605 (700-1)	1040-2 1/2 845 (900-2 1/2)	1040-2 3/4 845 (900-2 3/4)



SE-2, 23 MAR 2023 to 20 APR 2023

SE-2, 23 MAR 2023 to 20 APR 2023