

WAA CH 87013 W18A	APP CRS 177°	Rwy ldg TDZE Apt Elev	5500 213 213
---------------------------------------	------------------------	-----------------------------	---

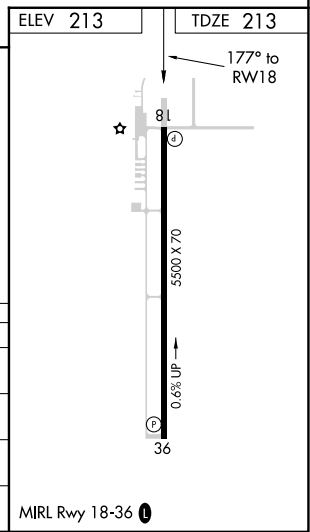
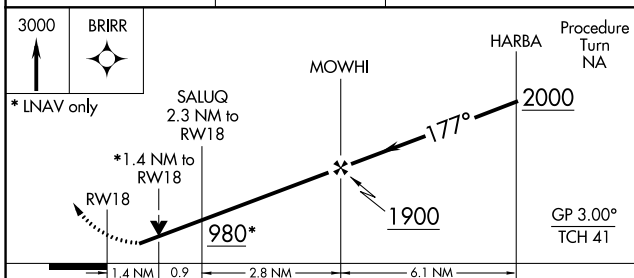
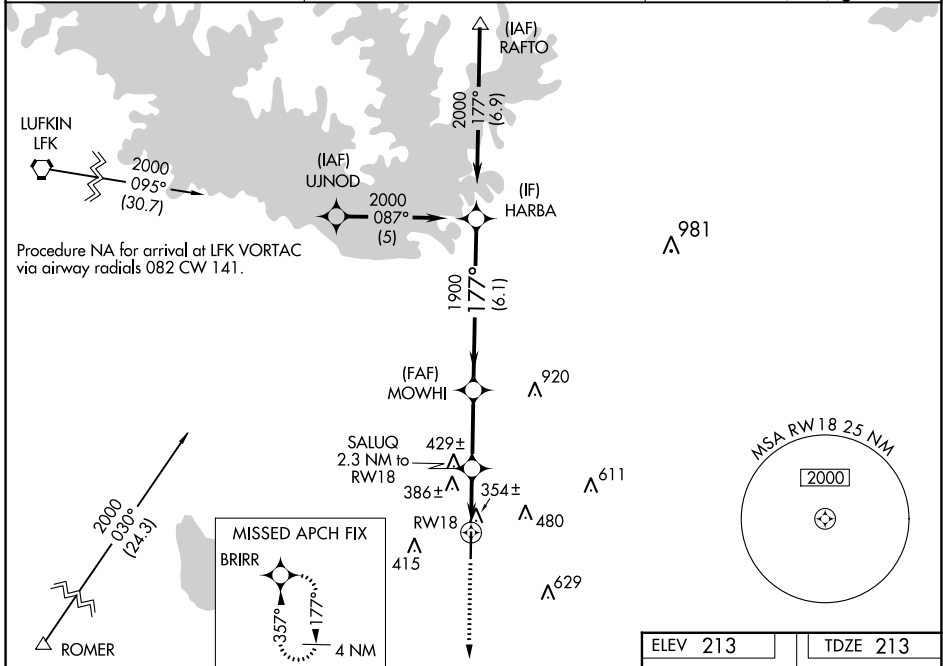
RNAV (GPS) RWY 18

JASPER COUNTY/BELL FLD (JAS)

▼ Baro-VNAV NA when using De Ridder altimeter setting. For uncompensated Baro-VNAV systems, LNAV/VNAV NA below -15°C (5°F) or above 54°C (130°F). DME/DME RNP-0.3 NA.
▲ Visibility reduction by helicopters NA. VDP NA when using De Ridder altimeter setting. When local altimeter setting not received, use De Ridder altimeter setting and increase all DA 85 feet, all MDA 100 feet, increase LPV all Cnts visibility ¼ mile, LNAV/VNAV all Cnts visibility ½ mile, LNAV Cat C visibility ¼ mile, Circling Cat C ¼ mile.

MISSED APPROACH:
Climb to 3000 direct BRIRR and hold.

AWOS-3 118.375	HOUSTON CENTER 126.95 363.05	UNICOM 122.8 (CTAF) 0
--------------------------	--	---------------------------------



CATEGORY	A	B	C	D
LPV DA	567-1¼		354 (400-1¼)	NA
LNAV/VNAV DA	730-1¾		517 (600-1¾)	NA
LNAV MDA	700-1	487 (500-1)	700-1¼ 487 (500-1¼)	NA
CIRCLING	740-1	527 (600-1)	780-1½ 567 (600-1½)	NA

SC-5, 23 MAR 2023 to 20 APR 2023

SC-5, 23 MAR 2023 to 20 APR 2023