

WAAS CH <b>42813</b> <b>W36A</b>	APP CRS <b>357°</b>	Rwy Idg TDZE <b>192</b> Apt Elev <b>213</b>	<b>5500</b>
----------------------------------------	------------------------	---------------------------------------------------	-------------

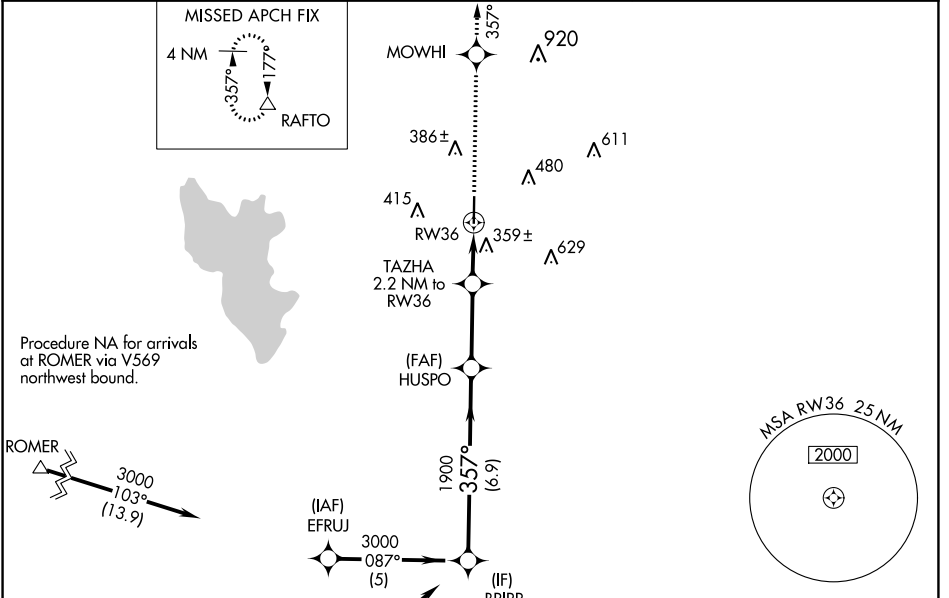
# RNAV (GPS) RWY 36

JASPER COUNTY/BELL FLD (JAS)

**⚠** Baro-VNAV NA when using De Ridder altimeter setting. For uncompensated Baro-VNAV systems, LNAV/VNAV NA below -15°C (5°F) or above 54°C (130°F). DME/DME RNP-0.3 NA. **⚠** Helicopter visibility reduction below 3/4 SM NA. VDP NA when using De Ridder altimeter setting. When local altimeter setting not received, use De Ridder altimeter setting and increase all DA 85 feet, all MDA 100 feet; increase LPV visibility all Cats and LNAV Cat C 3/8 mile, LNAV/VNAV visibility all Cats and Circling Cat C 1/4 mile.

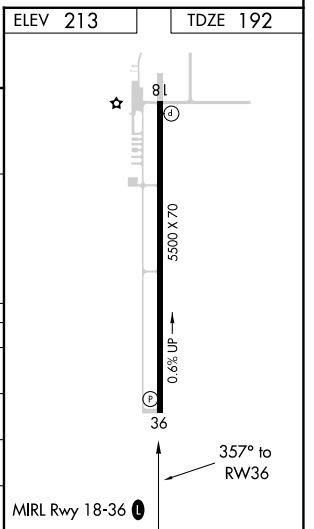
**MISSED APPROACH:** Climb to 4000 direct MOWHI and via track 357° to RAFTO and hold.

AWOS-3 <b>118.375</b>	HOUSTON CENTER <b>126.95 363.05</b>	UNICOM <b>122.8 (CTAF) 0</b>
--------------------------	----------------------------------------	---------------------------------



GP 3.00° TCH 41	6.9 NM	3 NM	0.7 NM	1.5 NM
--------------------	--------	------	--------	--------

CATEGORY	A	B	C	D
LPV DA	594-1 3/8	402 (400-1 3/8)		NA
LNAV/VNAV DA	675-1 3/4	483 (500-1 3/4)		NA
LNAV MDA	680-1 488 (500-1)		680-1 3/8 488 (500-1 3/8)	NA
CIRCLING	740-1 527 (600-1)		780-1 1/2 567 (600-1 1/2)	NA



SC-5, 23 MAR 2023 to 20 APR 2023

SC-5, 23 MAR 2023 to 20 APR 2023