

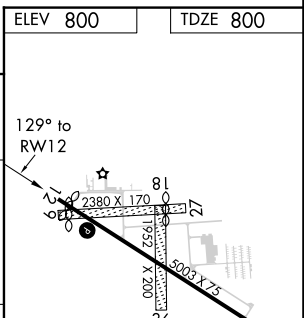
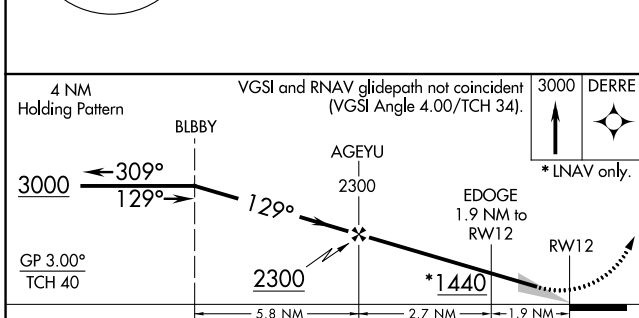
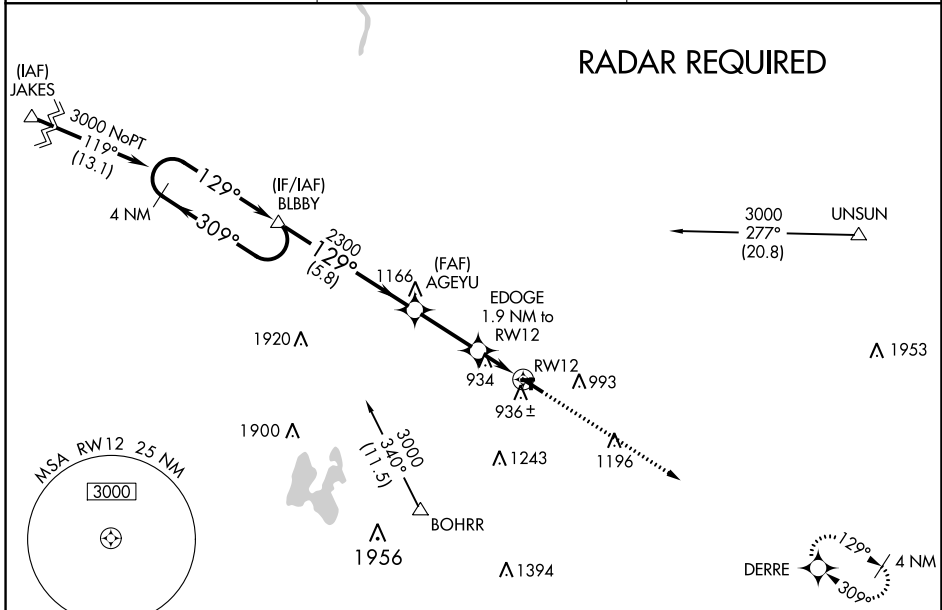
| | | | |
|--|------------------------|-----------------------------|---|
| WAAS CH 53326 W12A | APP CRS 129° | Rwy Idg TDZE Apt Elev | 4762 800 800 |
|--|------------------------|-----------------------------|---|

RNAV (GPS) RWY 12

HASTINGS (9D9)

| | |
|---|--|
| <p>▽ Circling NA to Rwy 9, 18, 27 and 36. Baro-VNAV NA. DME/DME RNP-0.3 NA. △ NA Use Grand Rapids altimeter setting; when not received, use Ionia altimeter setting: increase LPV DA to 1102 feet; increase LNAV/VNAV DA to 1260 feet and all visibilities ½ SM; increase all MDA 20 feet, and LNAV visibility Cat C ¼ SM.</p> | <p>MISSED APPROACH: Climb to 3000 direct DERRE and hold.</p> |
|---|--|

| | | |
|----------------------------|---|-----------------------------------|
| GRR ASOS 118.725 | GREAT LAKES APP CON * 128.4 257.6 | UNICOM 123.075 (CTAF) 0 |
|----------------------------|---|-----------------------------------|



| CATEGORY | A | B | C | D |
|-------------------|-----------------------|-----------------------|-------------------------|----|
| LPV DA | 1087-1 287 (300-1) | | | NA |
| LNAV/VNAV DA | 1245-1½ 445 (500-1½) | | | NA |
| LNAV MDA | 1240-1 | 440 (500-1) | 1240-1¼ 440 (500-1¼) | NA |
| C CIRCLING | 1380-1 580 (600-1) | 1420-1 620 (700-1) | 1440-1¾ 640 (700-1¾) | NA |

ELEV 800 TDZE 800

MIRL Rwy 12-30 0
REIL Rwy 12 and 30 0

EC-1, 23 MAR 2023 to 20 APR 2023

EC-1, 23 MAR 2023 to 20 APR 2023