

LOC I-SGO 109.7	APP CRS 060°	Rwy Idg 5008
		TDZE 142
		Apt Elev 144

LOC RWY 6

CLINTON-SAMPSON COUNTY (CTZ)

⚠ When local altimeter setting not received, use Kenansville altimeter setting and increase all MDA 60 feet, increase S-6 Cats C/D visibility 1/8 mile and increase Circling Cats C/D visibility 1/4 mile. Rwy 24 helicopter visibility reduction below 1 SM NA. Circling Rwy 24 NA at night.

MISSED APPROACH: Climb to 2000 direct CTZ NDB and hold, continue to climb-in-hold to 2000 (ADF required).

AWOS-3
119.125

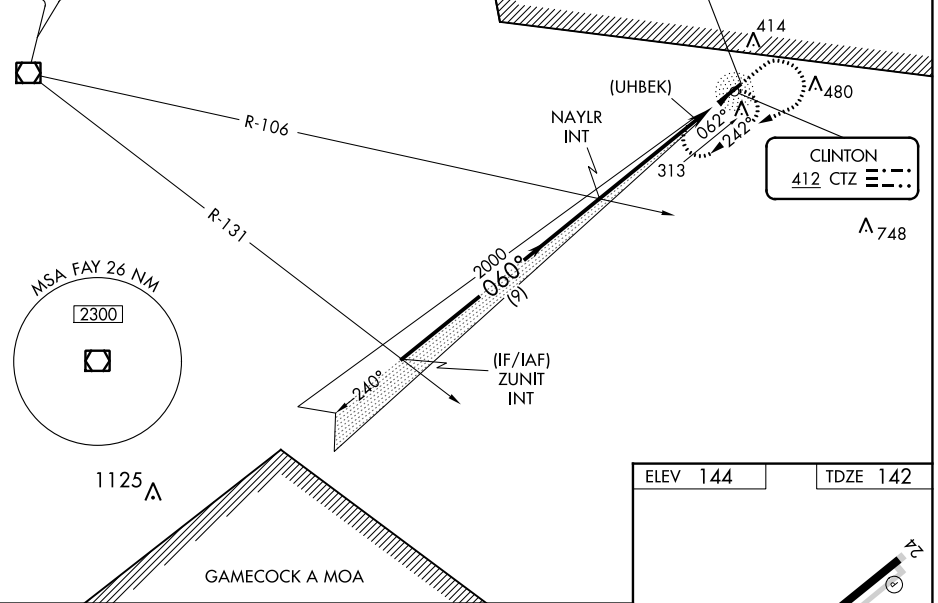
FAYETTEVILLE APP CON
133.0 290.25

UNICOM
122.8 (CTAF) 0

RADAR REQUIRED

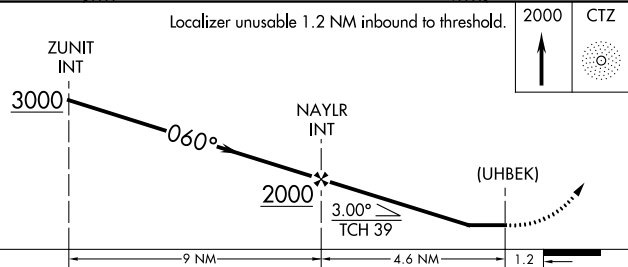
FAYETTEVILLE
114.85 FAY **⋯-⋯-⋯**
Chan 95(Y)

LOCALIZER 109.7
I-SGO **⋯-⋯-⋯**



SE-2, 23 MAR 2023 to 20 APR 2023

SE-2, 23 MAR 2023 to 20 APR 2023



ELEV 144	TDZE 142
----------	----------

MIRL Rwy 6-24
REIL Rws 6 and 24 0

FAF to MAP 4.6 NM					
Knots	60	90	120	150	180
Min:Sec	4:36	3:04	2:18	1:50	1:32

CATEGORY	A	B	C	D
S-6	620-1 1/2 478 (500-1 1/2)			
CIRCLING	680-1 1/2 536 (600-1 1/2)	780-1 1/2 636 (700-1 1/2)	840-2 696 (700-2)	840-2 1/4 696 (700-2 1/4)