

LOC/DME I-ORK 111.9 Chan 56	APP CRS 053°	Rwy Idg 5002 TDZE 541 Apt Elev 545
---	------------------------	---

LOC RWY 5

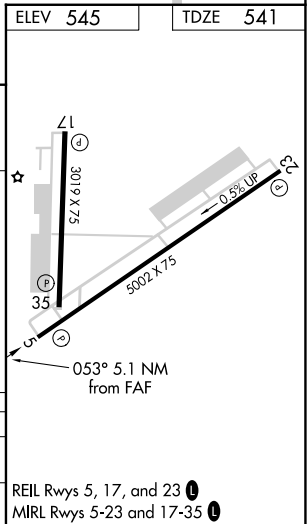
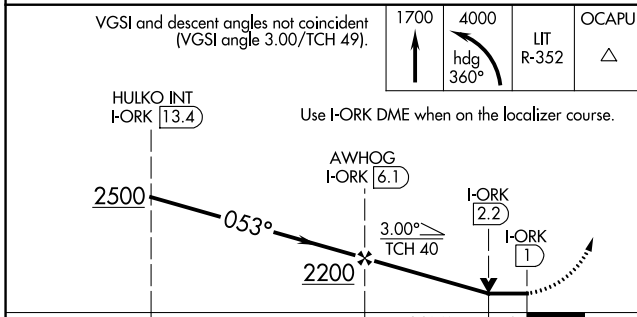
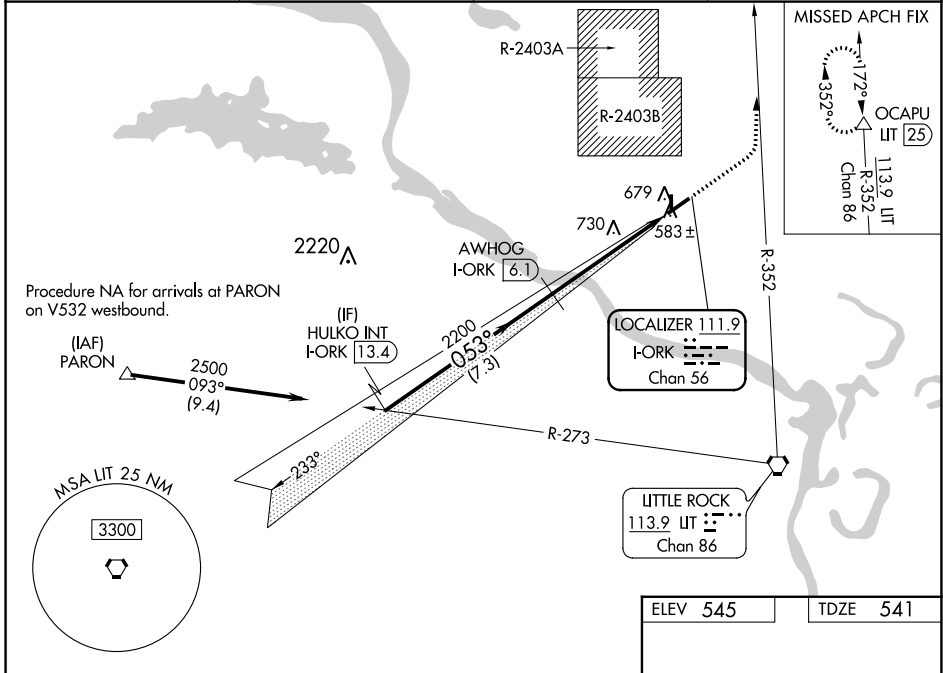
NORTH LITTLE ROCK MUNI (ORK)

From PARON: RNAV 1-GPS required.
DME and RADAR required.

⚠ Circling NA for Cats B and C north of Rwy 5-23 when R-2403B active.

MISSED APPROACH: Climb to 1700 then climbing left turn to 4000 on heading 360° and LIT VORTAC R-352 to OCAPU/LIT 25 DME and hold.

AWOS-3PT 123.775	LITTLE ROCK APP CON 119.5 306.2	CLNC DEL 121.6	UNICOM 123.075 (CTAF) 0
----------------------------	---	--------------------------	-----------------------------------



CATEGORY	A	B	C	D
S-5	980-1	439 (500-1)	980-1¼ 439 (500-1¼)	NA
C CIRCLING	1040-1	495 (500-1)	1080-1½ 535 (600-1½)	NA

REIL Rws 5, 17, and 23 0
MRL Rws 5-23 and 17-35 0

SC-1, 23 MAR 2023 to 20 APR 2023

SC-1, 23 MAR 2023 to 20 APR 2023