

WAAS CH 58037 W32A	APP CRS 319°	Rwy ldg TDZE Apt Elev	5004 30 32
--	------------------------	-----------------------------	---------------------------------------

RNAV (GPS) RWY 32

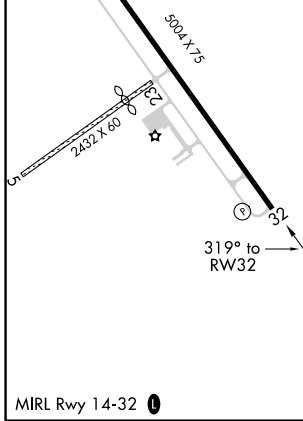
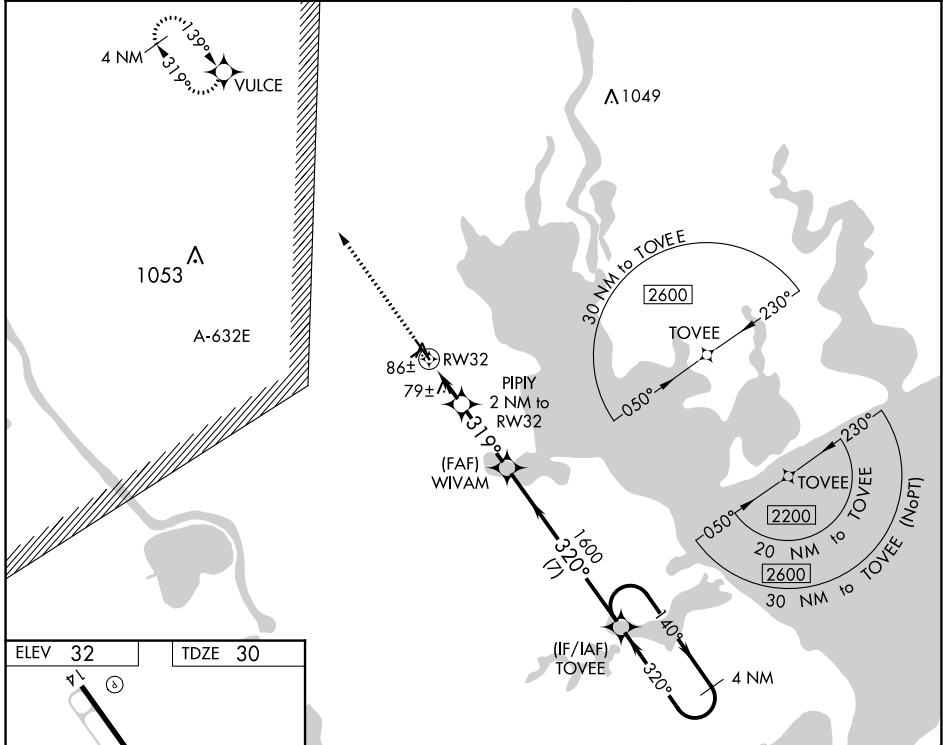
CALHOUN COUNTY (PKV)

RNP APCH - GPS.

⚠ When local altimeter setting not received, use Victoria altimeter setting and increase all MDAs 60 feet and LNAV visibility Cat C ¼ SM and LP visibility Cat C ½ SM. Rwy 32 helicopter visibility reduction below 1 SM NA. Straight-In Rwy 32 NA at night, Circling Rwy 32 NA at night.

MISSED APPROACH:
Climb to 2200 direct VULCE and hold.

AWOS-3 118.275	HOUSTON CENTER 128.15 350.3	UNICOM 122.8 (CTAF) 0
--------------------------	---------------------------------------	---------------------------------



2200	VULCE	TOVEE	4 NM Holding Pattern
↑	✧	↑	↑
PIPIY 2 NM to RWY 32	WIVAM	TOVEE	140° → 2200
≤ 3.00° TCH 45	1600	← 320°	
RWY 32	700	320°	
→ 2 NM	→ 2.8 NM	→ 7 NM	
CATEGORY	A	B	C
LP MDA	340-1	310 (400-1)	340-7/8 310 (400-7/8)
LNAV MDA	400-1	370 (400-1)	NA
<input checked="" type="checkbox"/> CIRCLING	520-1	488 (500-1)	560-1½ 528 (600-1½)
D			NA

SC-5, 23 MAR 2023 to 20 APR 2023

SC-5, 23 MAR 2023 to 20 APR 2023