

APP CRS 179°	Rwy Idg 3907
	TDZE 516
	Apt Elev 516

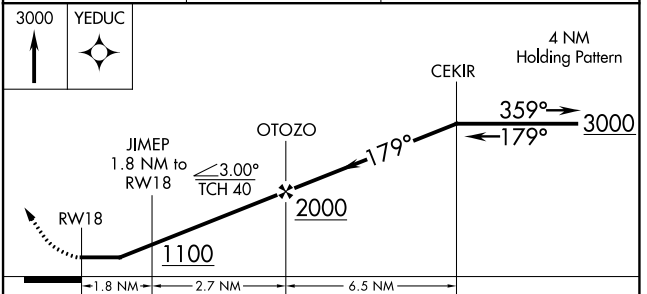
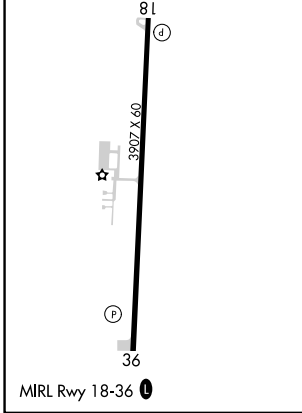
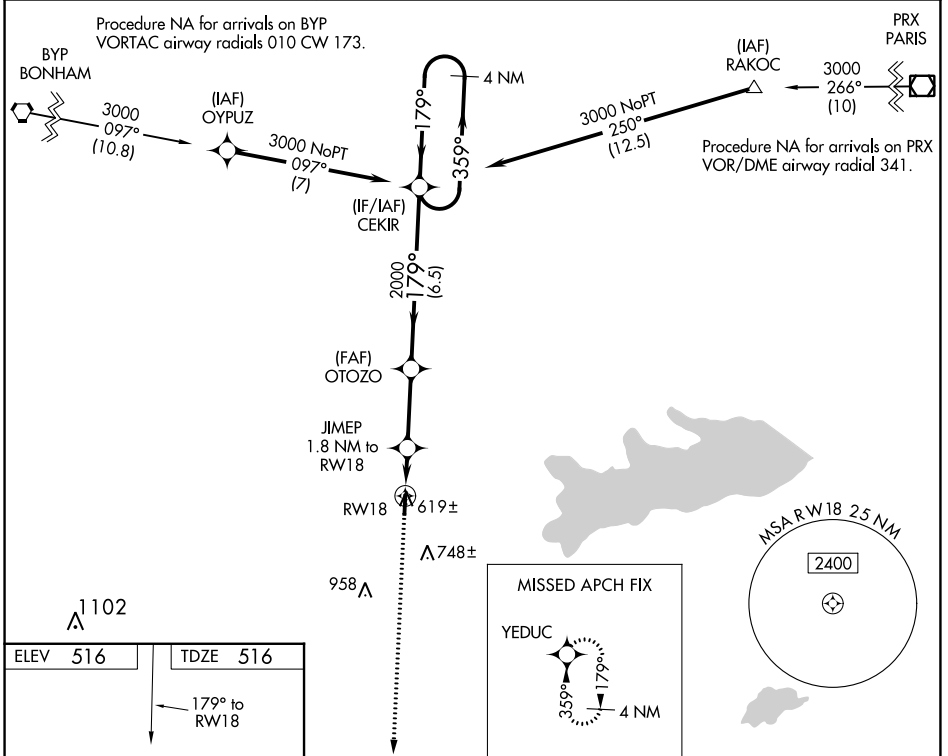
RNAV (GPS) RWY 18

COMMERCE MUNI (2F7)

⚠ NA DME/DME RNP-0.3 NA. Rwy 18 helicopter visibility reduction below 3/4 SM NA. Use Greenville altimeter setting, when not received, use Sulphur Springs altimeter setting and increase all MDAs 20 feet.

⚠ MISSED APPROACH: Climb to 3000 direct YEDUC and hold.

GVT AWOS-3 133.425	FORT WORTH CENTER 127.6 254.3	CTAF 122.9
------------------------------	---	----------------------



CATEGORY	A	B	C	D
LNAV MDA	920-1	404 (500-1)	NA	
CIRCLING	980-1 464 (500-1)	1140-1 624 (700-1)	NA	

SC-2, 23 MAR 2023 to 20 APR 2023

SC-2, 23 MAR 2023 to 20 APR 2023