

WAAS CH 45818 W18A	APP CRS 180°	Rwy ldg TDZE Apt Elev	5001 44 46
--	------------------------	-----------------------------	---------------------------------------


RNAV (GPS) RWY 18

HAMMOND NORTHSHORE RGNL (HDC)

RNP APCH - GPS.

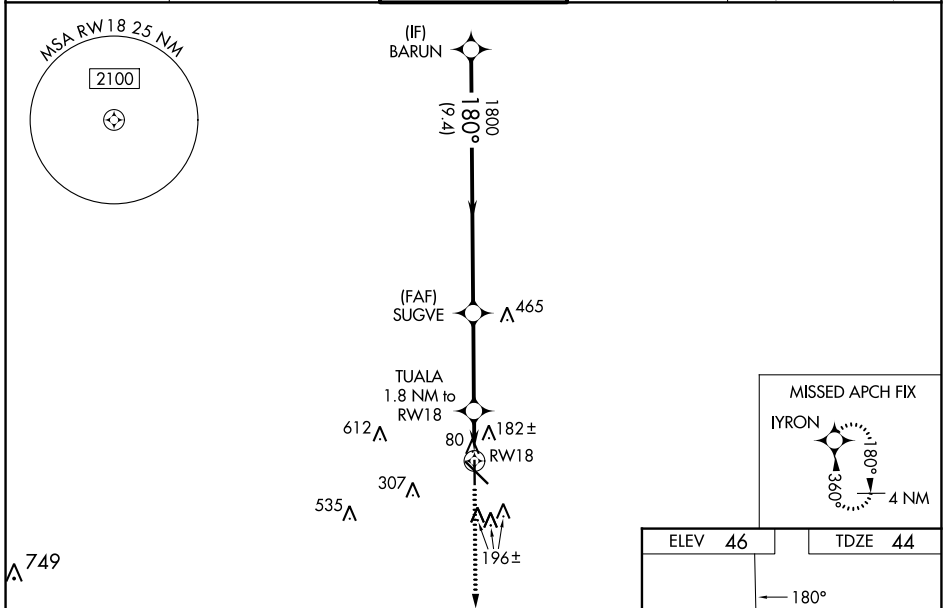
▼ Baro-VNAV and VDP NA when using Louis Armstrong New Orleans Intl altimeter setting. For uncompensated Baro-VNAV systems, LNAV/VNAV NA below -15°C or above 54°C. When local altimeter setting not received, use Louis Armstrong New Orleans Intl altimeter setting and increase LPV DA to 339 feet; increase LNAV/VNAV DA to 555 feet and all visibilities ¼ SM. Increase all MDAs 100 feet and LNAV visibility Cat C/D ½ SM, and Circling visibility Cat C/D ½ SM. For inop ALS when using Louis Armstrong New Orleans Intl altimeter increase LPV all Cats visibility to 7/8 SM; LNAV/VNAV all Cats visibility to 1 3/8 SM and LNAV Cats C/D visibility to 1 3/8 SM. For inop ALS increase LNAV/VNAV all Cats visibility to 1 1/4 SM and LNAV Cat C/D visibility to 1 1/8 SM.

MALSRS

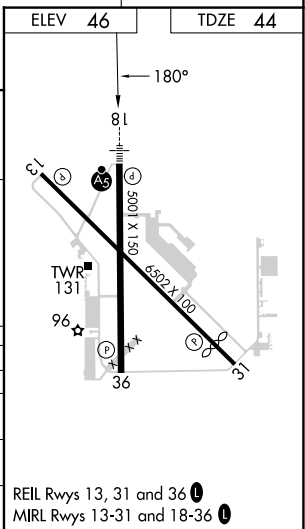


MISSED APPROACH:
Climb to 2200 direct IYRON and hold.

ATIS 118.325	NEW ORLEANS APP CON 119.3 350.35	HAMMOND TOWER ★ 120.575 (CTAF) ①	GND CON 119.85	CLNC DEL 119.3 (When twr closed)
------------------------	--	--	--------------------------	---



	BARUN		SUGVE		TUALA 1.8 NM to RWY 18		RWY 18	
	1800		1800		660		1.1 NM to RWY 18	
GP 3.00° TCH 52	180°		180°		180°		180°	
	9.4 NM		3.5 NM		0.7 NM		1.1 NM	
CATEGORY	A		B		C		D	
LPV DA	250-1/2		206 (300-1/2)					
LNAV/VNAV DA	466-3/4		422 (500-3/4)					
LNAV MDA	460-1/2		416 (500-1/2)		460-3/4		416 (500-3/4)	
Ⓢ CIRCLING	500-1		454 (500-1)		620-1 1/2 574 (600-1 1/2)		920-2 3/4 874 (900-2 3/4)	



SC-4, 23 MAR 2023 to 20 APR 2023

SC-4, 23 MAR 2023 to 20 APR 2023