

WAAS CH 99405 W11A	APP CRS 111°	Rwy Idg 4000 TDZE 1004 Apt Elev 1004
--	------------------------	---

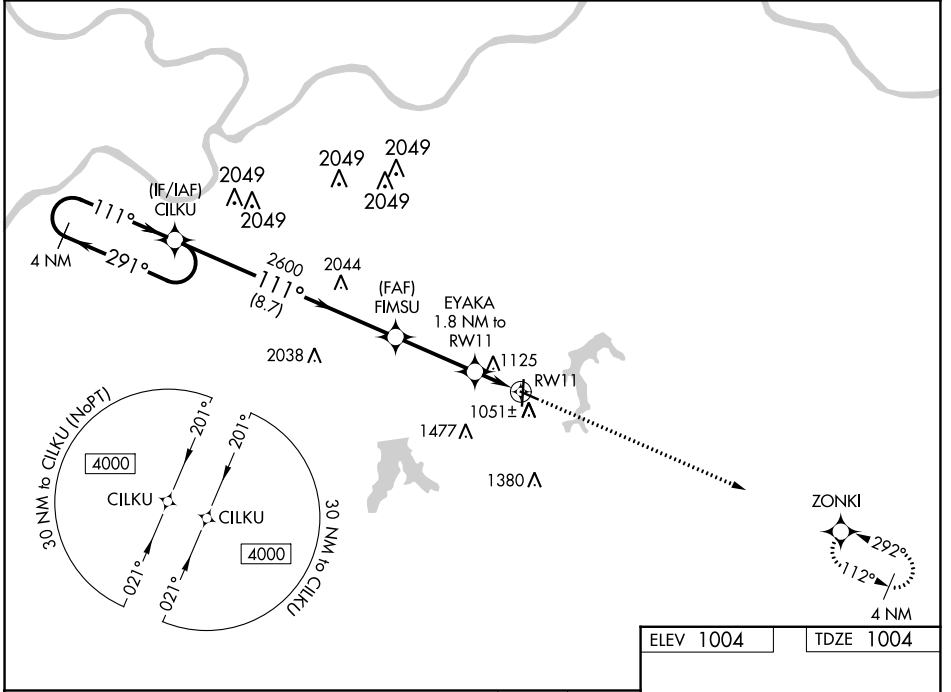
RNAV (GPS) RWY 11

LEE'S SUMMIT MUNI (LXT)

▽ For uncompensated Baro-VNAV systems, LNAV/VNAV NA below -17°C (2°F) or above 54°C (130°F). Rwy 11 helicopter visibility reduction below ¾ SM NA. DME/DME RNP-0.3 NA.

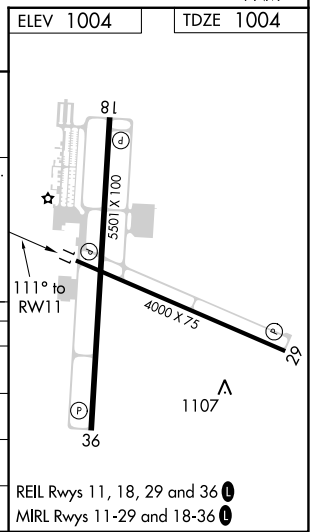
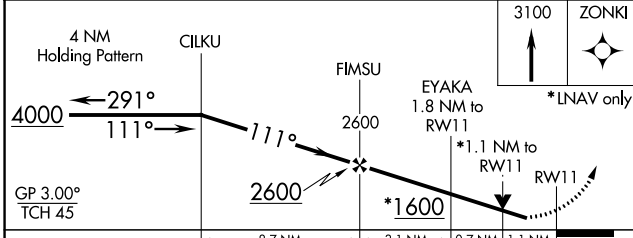
MISSED APPROACH: Climb to 3100 direct ZONKI and hold.

ASOS 124.175	KANSAS CITY APP CON 118.4 307.35	CLNC DEL 118.45	UNICOM 122.8 (CTAF) 📻
------------------------	--	---------------------------	--



NC-3, 23 MAR 2023 to 20 APR 2023

NC-3, 23 MAR 2023 to 20 APR 2023



CATEGORY	A	B	C	D
LPV DA		1254-7/8	250 (300-7/8)	
LNAV/VNAV DA		1381-1 1/4	377 (400-1 1/4)	
LNAV MDA		1380-1	376 (400-1)	
📻 CIRCLING	1440-1 436 (500-1)	1540-1 536 (600-1)	1780-2 1/4 776 (800-2 1/4)	1780-2 1/2 776 (800-2 1/2)

REIL Rws 11, 18, 29 and 36 **📻**
MIRL Rws 11-29 and 18-36 **📻**