

WAAS CH 48905 W29A	APP CRS 291°	Rwy Idg TDZE 1004 Apt Elev 1004
--	------------------------	---

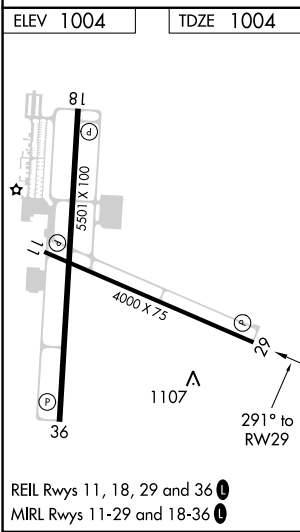
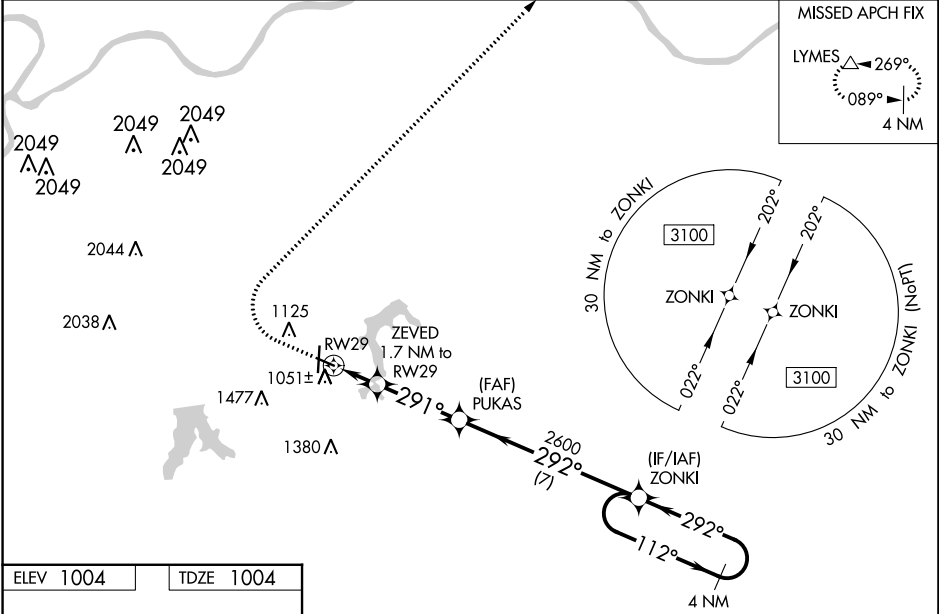
RNAV (GPS) RWY 29

LEE'S SUMMIT MUNI (LXT)

⚠ For uncompensated Baro-VNAV systems, LNAV/VNAV NA below -17°C (2°F) or above 54°C (130°F). DME/DME RNP-0.3 NA. VDP and Baro-VNAV NA when using Charles B. Wheeler Downtown altimeter setting. When local altimeter setting not received, use Charles B. Wheeler Downtown altimeter setting: increase LPV DA to 1322 feet and all visibilities $\frac{1}{8}$ SM; increase LNAV/VNAV DA to 1359 feet and all visibilities $\frac{1}{8}$ SM; increase all MDA 80 feet and visibility Cats C and D $\frac{1}{4}$ SM.

MISSED APPROACH: Climb to 1500 then climbing right turn to 3000 direct LYMES and hold.

ASOS 124.175	KANSAS CITY APP CON 118.4 307.35	CLNC DEL 118.45	UNICOM 122.8 (CTAF) 0
------------------------	--	---------------------------	---------------------------------



	1500	3000	LYMES	
	↑	↷	△	
* LNAV only			ZEVED 1.7 NM to RWY 29	
			* 1 NM to RWY 29	
			1580*	
			2600	
			292°	
			112°	
			3100	
			4 NM Holding Pattern	
			GP 3.00°	
			TCH 40	
CATEGORY	A	B	C	D
LPV DA		1254- $\frac{3}{4}$	250 (300- $\frac{3}{4}$)	
LNAV/VNAV DA		1291- $\frac{7}{8}$	287 (300- $\frac{7}{8}$)	
LNAV MDA		1360-1	356 (400-1)	
CIRCLING	1440-1 436 (500-1)	1540-1 536 (600-1)	1780-2 $\frac{1}{4}$ 776 (800-2 $\frac{1}{4}$)	1780-2 $\frac{1}{2}$ 776 (800-2 $\frac{1}{2}$)

NC-3, 23 MAR 2023 to 20 APR 2023

NC-3, 23 MAR 2023 to 20 APR 2023