

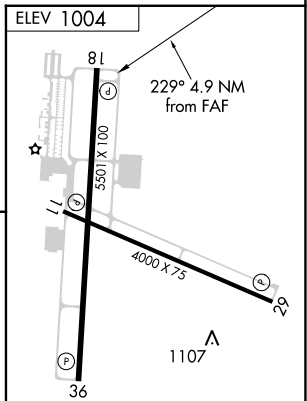
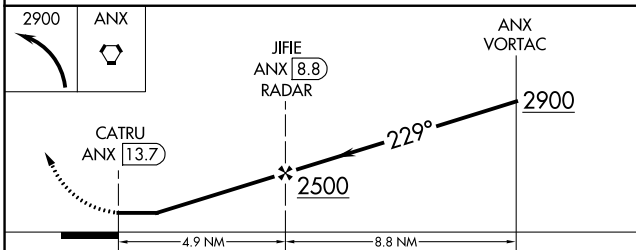
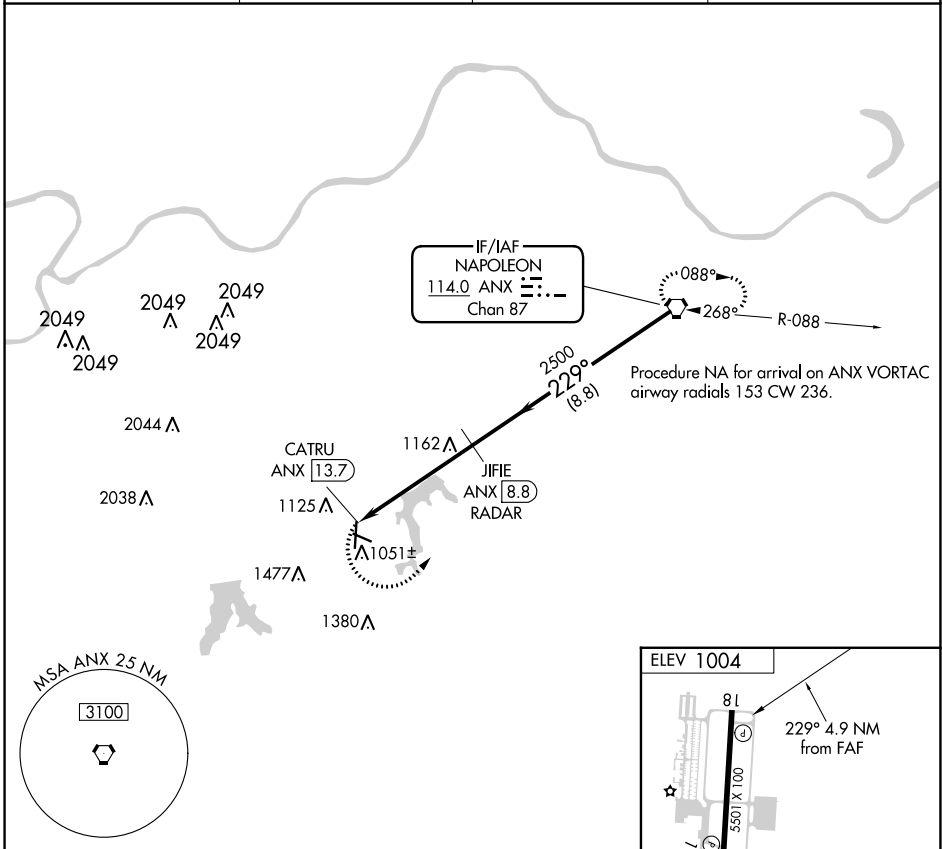
VORTAC ANX 114.0 Chan 87	APP CRS 229°	Rwy Idg TDZE Apt Elev 1004	N/A N/A
--	------------------------	--	--------------------------

VOR-A
LEE'S SUMMIT MUNI (LXT)

▽ DME or RADAR required. When local altimeter setting not received, use Charles B. Wheeler Downtown altimeter setting and increase all MDA 80 feet, and Cat C and D visibility ¼ mile.

▲ MISSED APPROACH: Climbing left turn to 2900 direct ANX VORTAC and hold.

ASOS 124.175	KANSAS CITY APP CON 118.4 307.35	CLNC DEL 118.45	UNICOM 122.8 (CTAF) 0
------------------------	--	---------------------------	--



REIL Rwys 11, 18, 29 and 36 **0**
MIRL Rwys 11-29 and 18-36 **0**

CATEGORY	A	B	C	D	FAF to MAP 4.9 NM					
C CIRCLING	1440-1 436 (500-1)	1540-1 536 (600-1)	1780-2¼ 776 (800-2¼)	1780-2½ 776 (800-2½)	Knots	60	90	120	150	180
					Min:Sec	4:54	3:16	2:27	1:58	1:38

NC-3, 23 MAR 2023 to 20 APR 2023

NC-3, 23 MAR 2023 to 20 APR 2023