

WAAS CH 58332 W19A	APP CRS 186°	Rwy Idg TDZE 522 Apt Elev 522	5002
--	------------------------	---	-------------

RNAV (GPS) RWY 19

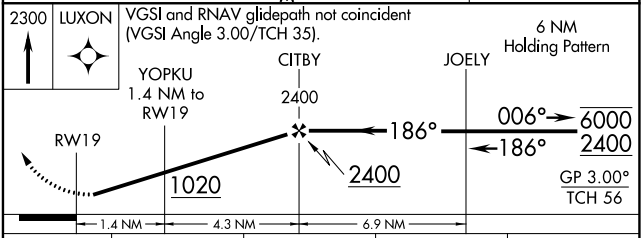
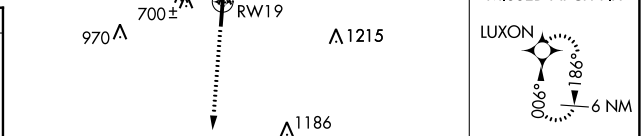
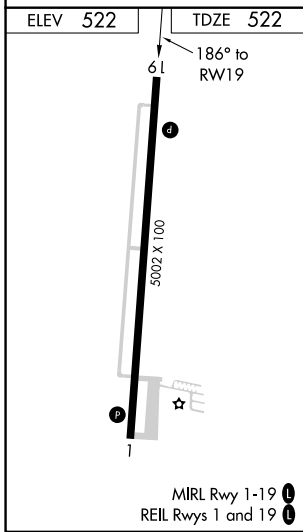
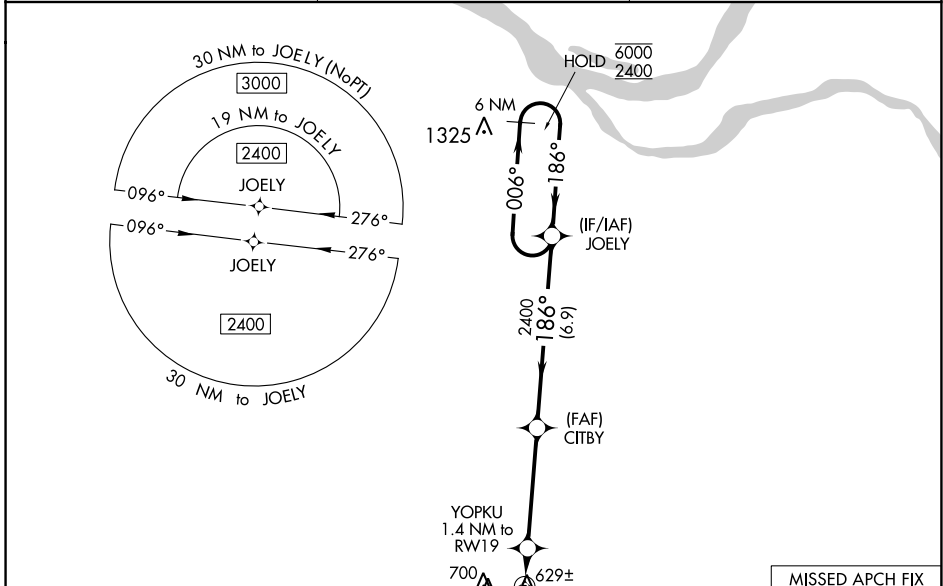
MAYFIELD GRAVES COUNTY (M25)

RNP APCH - GPS.

⚠ Circling Rwy 19 NA at night. Rwy 19 helicopter visibility reduction below 3/4 SM NA. Baro-VNAV NA when using Paducah altimeter setting. For uncompensated Baro-VNAV systems, LNAV/VNAV NA below -16°C or above 54°C. When local altimeter setting not received, use Paducah altimeter setting: increase LPV DA to 833 feet, LNAV/VNAV DA to 977 feet and all visibilities 1/4 SM; increase all MDAs 80 feet and visibility Cats C and D 1/4 SM.

⚠ MISSED APPROACH: Climb to 2300 direct LUXON and hold.

AWOS-3 120.625	MEMPHIS CENTER 133.65 292.15	UNICOM 122.8 (CTAF) 0
--------------------------	--	---------------------------------



CATEGORY	A	B	C	D
LPV DA	772-1 250 (300-1)			
LNAV/VNAV DA	916-1 394 (400-1 1/2)			
LNAV MDA	880-1 358 (400-1)			
C CIRCLING	1060-1 538 (600-1)	1060-1 1/2 538 (600-1 1/2)	1280-2 1/2 758 (800-2 1/2)	

SE-1, 23 MAR 2023 to 20 APR 2023

SE-1, 23 MAR 2023 to 20 APR 2023