

WAAS CH 50506 W28A	APP CRS 284°	Rwy Idg TDZE 945 Apt Elev 945	5800 945 945
--	------------------------	---	---

RNAV (GPS) RWY 28

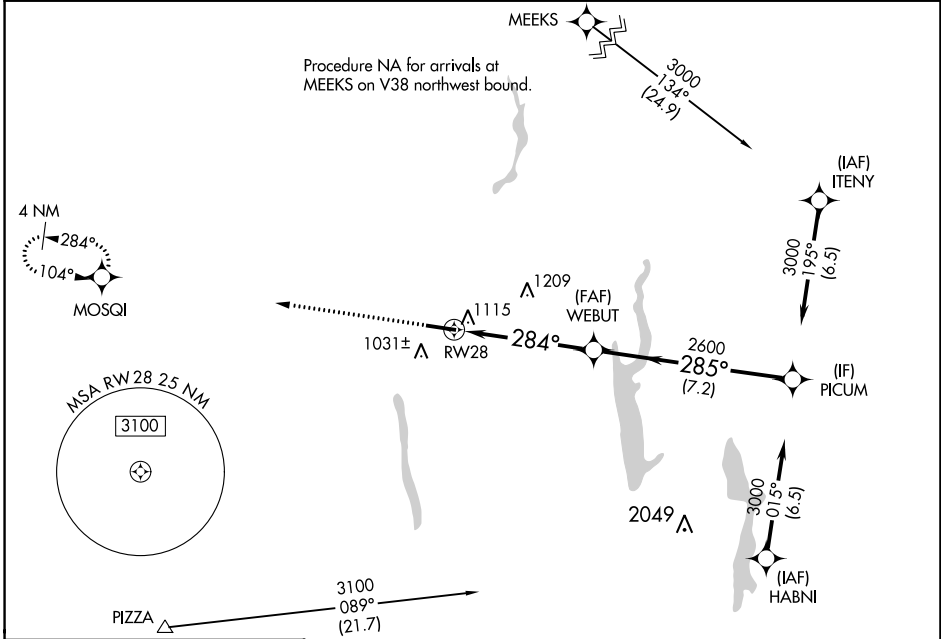
DELAWARE MUNI/JIM MOORE FLD (DLZ)

RNP APCH.

▼ For uncompensated Baro-VNAV systems, LNAV/VNAV NA below -16°C or above 54°C. Rwy 28 helicopter visibility reduction below ¾ SM NA.

MISSED APPROACH: Climb to 2600 direct MOSQI and hold.

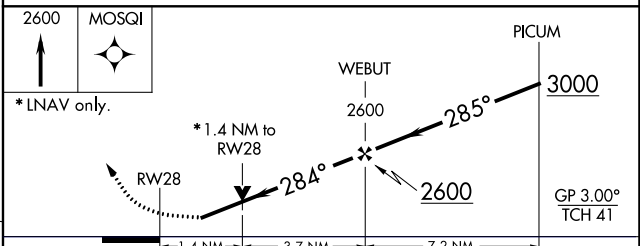
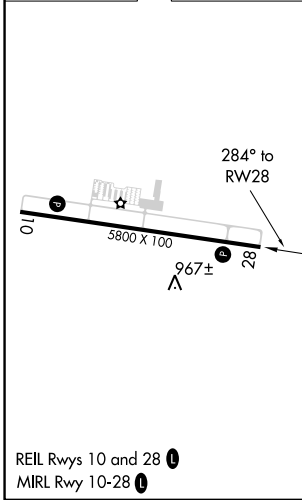
AWOS-3 119.025	COLUMBUS APP CON 125.95 317.775	UNICOM 122.7 (CTAF)
--------------------------	---	-------------------------------



EC-2, 23 MAR 2023 to 20 APR 2023

EC-2, 23 MAR 2023 to 20 APR 2023

ELEV 945	TDZE 945
-----------------	-----------------



CATEGORY	A	B	C	D
LPV DA	1195-7/8 250 (300-7/8)			
LNAV/VNAV DA	1406-1 3/4 461 (500-1 3/4)			
LNAV MDA	1420-1	475 (500-1)	1420-1 3/8 475 (500-1 3/8)	
<input checked="" type="checkbox"/> CIRCLING	1420-1	475 (500-1)	1560-1 3/4 615 (700-1 3/4)	1560-2 615 (700-2)