

WAAS CH 58203 W18A	APP CRS 179°	Rwy Idg TDZE Apt Elev	4002 685 690
--	------------------------	-----------------------------	---

RNAV (GPS) RWY 18

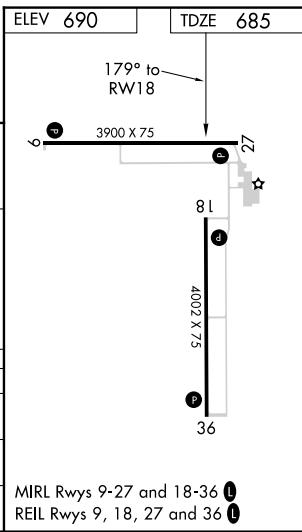
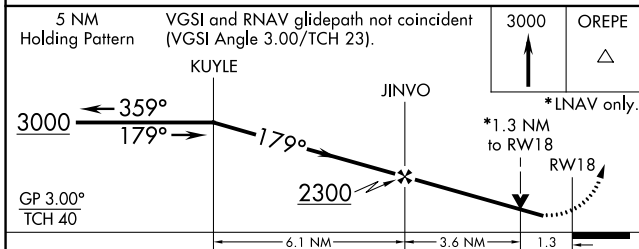
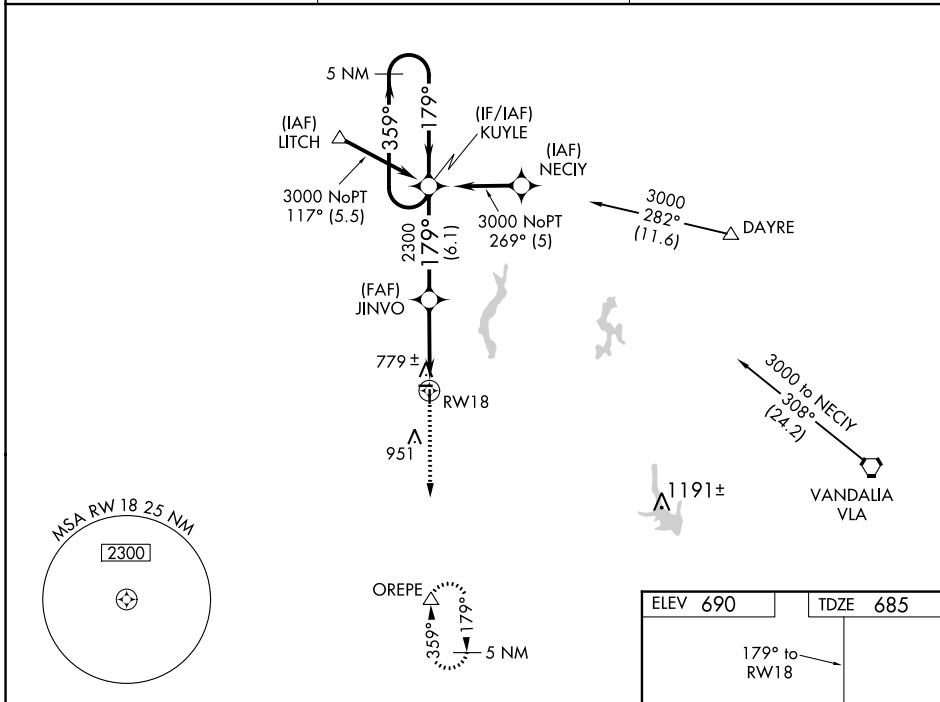
LITCHFIELD MUNI (3LF)

RNP APCH.

Baro-VNAV and VDP NA when using Taylorville altimeter setting. For uncompensated Baro-VNAV systems, LNAV/VNAV NA below -16°C or above 54°C. Rwy 18 helicopter visibility reduction below 3/4 SM NA. When local altimeter setting not received, use Taylorville altimeter setting and increase all DA 73 feet and all MDA 80 feet. Increase LPV all Cats visibility to 1 1/2 SM and LNAV Cat C visibility to 1 3/8 SM.

MISSED APPROACH: Climb to 3000 direct OREPE and hold.

AWOS-3 118.175	ST. LOUIS APP CON 124.2 353.9	UNICOM 122.8 (CTAF) 0
--------------------------	---	---------------------------------



CATEGORY	A	B	C	D
LPV DA	997-1 312 (400-1)			NA
LNAV/VNAV DA	1112-1 1/2 427 (500-1 1/2)			NA
LNAV MDA	1120-1 435 (500-1)		1120-1 1/4 435 (500-1 1/4)	NA

MIRL Rwy 9-27 and 18-36 0
REIL Rwy 9, 18, 27 and 36 0

EC-3, 23 MAR 2023 to 20 APR 2023

EC-3, 23 MAR 2023 to 20 APR 2023