

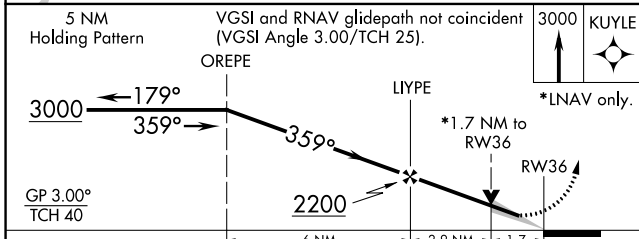
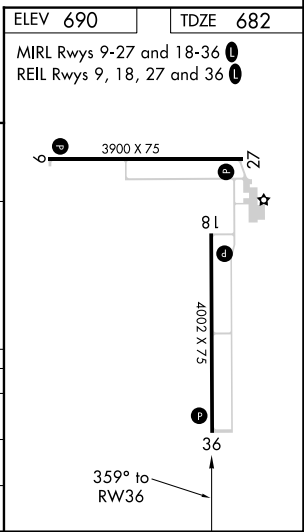
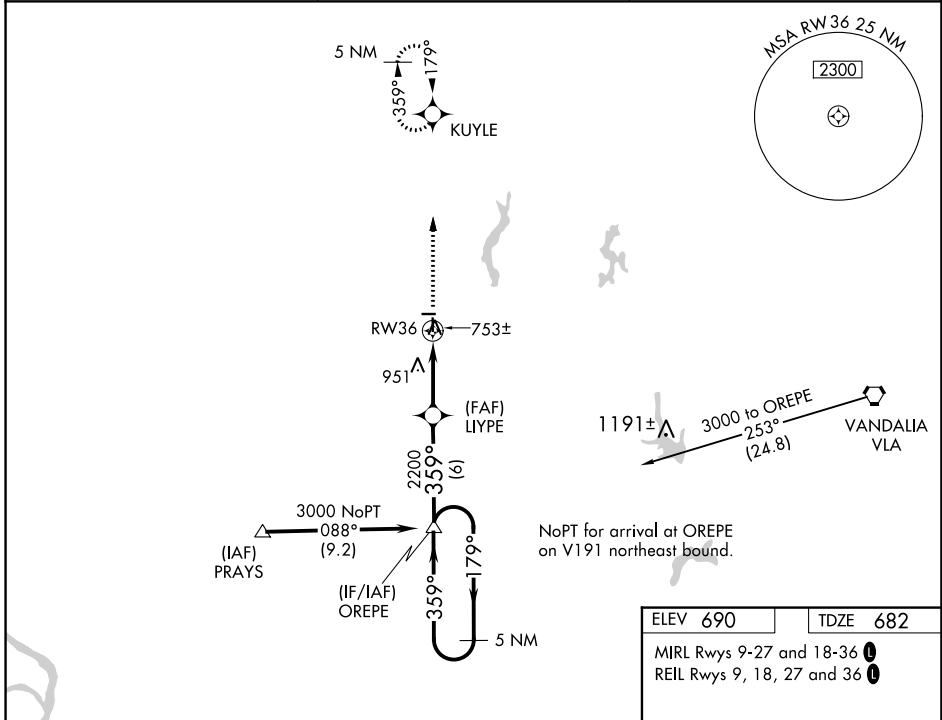
WAAS CH 40403 W36A	APP CRS 359°	Rwy Idg 4002 TDZE 682 Apt Elev 690
--	------------------------	---

RNAV (GPS) RWY 36

LITCHFIELD MUNI (3LF)

RNP APCH.	<p>⚠ Baro-VNAV and VDP NA when using Taylorville altimeter setting. For uncompensated Baro-VNAV systems, LNAV/VNAV NA below -16°C or above 54°C. When local altimeter setting not received, use Taylorville altimeter setting and increase all DA 73 feet and all MDA 80 feet. Increase LNAV Cat C visibility to 1½ SM.</p>	<p>MISSED APPROACH: Climb to 3000 direct KUYLE and hold.</p>
-----------	--	--

AWOS-3 118.175	ST. LOUIS APP CON 124.2 353.9	UNICOM 122.8 (CTAF) 0
--------------------------	---	---------------------------------



CATEGORY	A	B	C	D
LPV DA	958-1 276 (300-1)			NA
LNAV/VNAV DA	1013-1¼ 331 (400-1¼)			NA
LNAV MDA	1260-1 578 (600-1)		1260-1⅝ 578 (600-1⅝)	

EC-3, 23 MAR 2023 to 20 APR 2023

EC-3, 23 MAR 2023 to 20 APR 2023