

WAAS CH <b>50327</b> <b>W27A</b>	APP CRS <b>268°</b>	Rwy Idg TDZE Apt Elev	<b>4095</b> <b>1015</b> <b>1021</b>
--	------------------------	-----------------------------	---

# RNAV (GPS) RWY 27

UNION COUNTY (MRT)

RNP APCH - GPS.

⚠ Circling NA to Rwy 8 and 26. Rwy 27 helicopter visibility reduction below 1 SM NA.  
 ⚠ Straight-in Rwy 27 at night, Circling Rwy 27 at night, operational VGSI required, remain on or above VGSI glidepath until threshold.

MISSED APPROACH: Climb to 3000 direct KUTAW and hold.

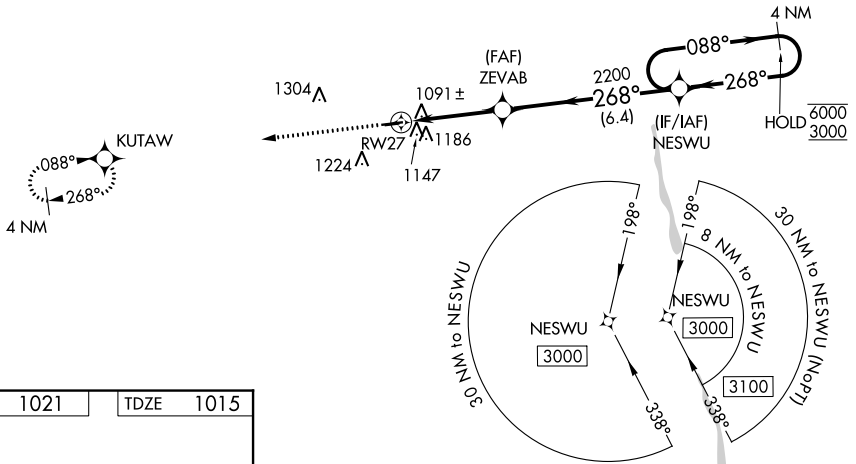
AWOS-3  
**119.275**

COLUMBUS APP CON  
**125.95 317.775**

UNICOM  
**122.8 (CTAF)**

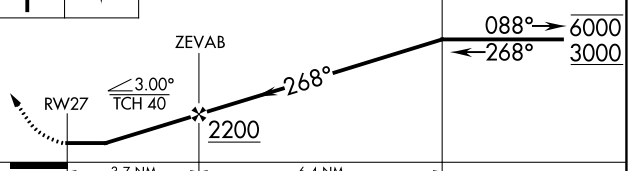
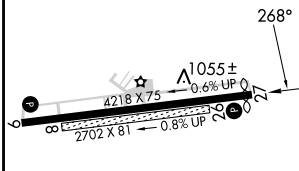
△ 1740

△ 1457



ELEV 1021	TDZE 1015
-----------	-----------

3000 KUTAW VGSI and descent angles not coincident (VGSI Angle 3.00/TCH 33). NESWU 4 NM Holding Pattern



CATEGORY	A	B	C	D
LP MDA	1360-1		345 (400-1)	
LNAV MDA	1400-1	385 (400-1)	1400-1½	385 (400-1½)
CIRCLING	1520-1 499 (500-1)	1540-1 519 (600-1)	1620-1½ 599 (600-1½)	1620-2 599 (600-2)

MIRL Rwy 9-27  
 REIL Rwy 9 and 27