

WAAS CH 82714 W22A	APP CRS 217°	Rwy Idg TDZE 465 Apt Elev 468	5001
--	------------------------	---	------

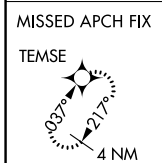
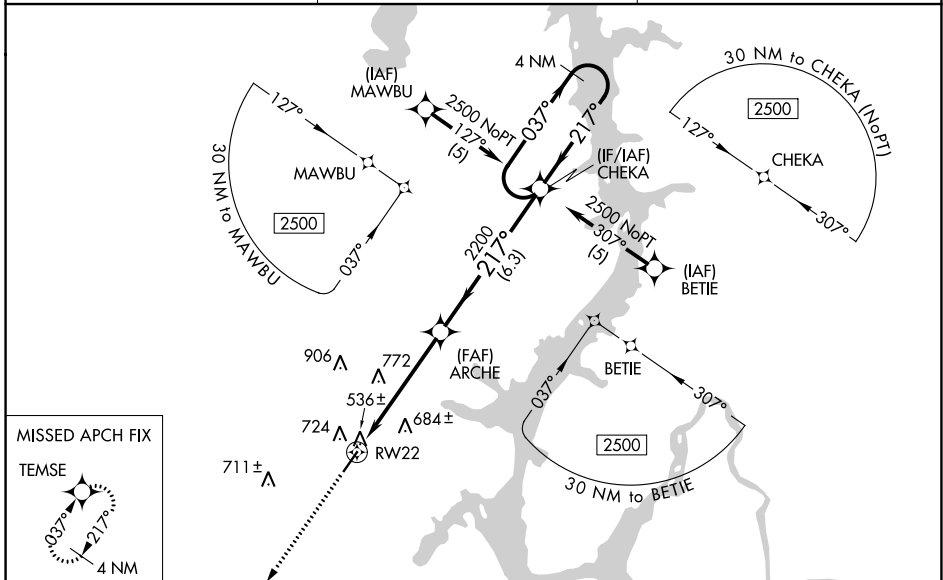
AL-6386 (FAA)

RNAV (GPS) RWY 22

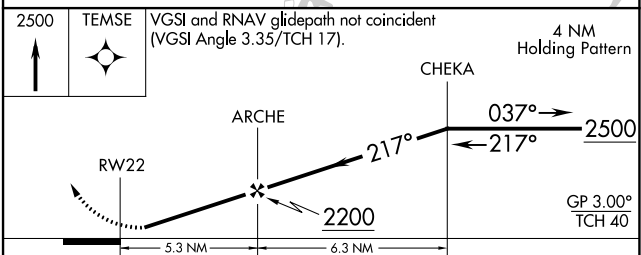
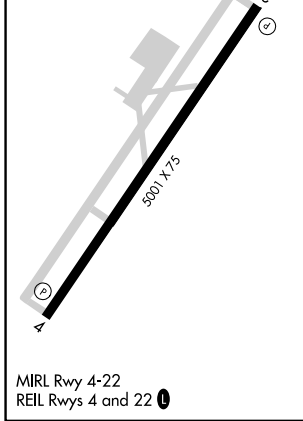
BENTON COUNTY (ØM4)

RNP APCH.	<p>Baro-VNAV NA. Rwy 22 helicopter visibility reduction below 1 SM NA. Use Beech River Rgnl altimeter setting; when not received, use Jackson altimeter setting and increase all DA 58 feet and all MDA 60 feet and increase LPV all Cats visibility ¼ mile, LNAV/VNAV all Cats visibility ¼ mile, and LNAV Cat C visibility ¼ mile. Procedure NA at night.</p>	MISSED APPROACH: Climb to 2500 direct TEMSE and hold.
-----------	--	---

PVE AWOS-3 118.125	MEMPHIS CENTER 125.85 379.25	UNICOM 122.8 (CTAF) Ø
------------------------------	--	---------------------------------



ELEV 468	TDZE 465
----------	----------



CATEGORY	A	B	C	D
LPV DA	833-1¼	368 (400-1¼)		NA
LNAV/VNAV DA	980-1¾	515 (600-1¾)		NA
LNAV MDA	1080-1	615 (700-1)	1080-1¾ 615 (700-1¾)	NA

SE-1, 23 MAR 2023 to 20 APR 2023

SE-1, 23 MAR 2023 to 20 APR 2023