

WAAS CH 82033 W22A	APP CRS 223°	Rwy Idg TDZE Apt Elev	3895 1003 1008
--	------------------------	-----------------------------	---

RNAV (GPS) RWY 22

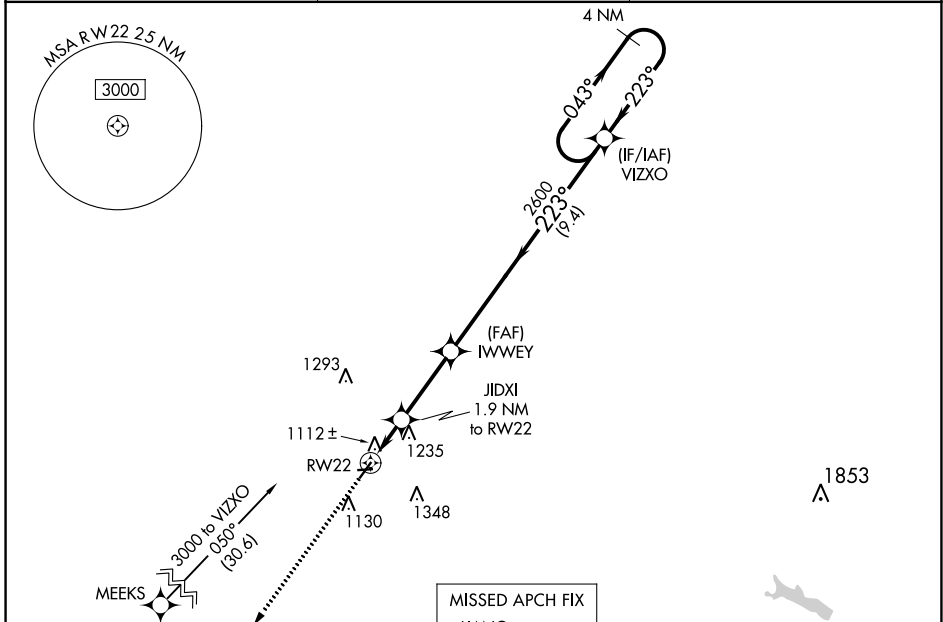
PORT BUCYRUS/CRAWFORD COUNTY (17G)

RNP APCH.

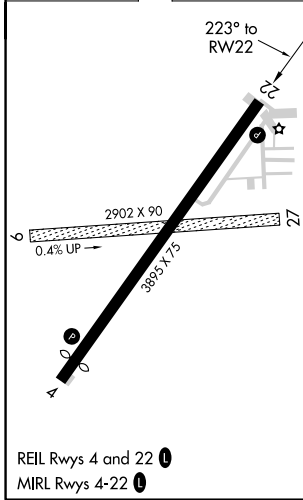
NA Circling NA to Rwy 22. Rwy 22 helicopter visibility reduction below 1 SM NA. Straight-in and Circling Rwy 22 NA at night. When local altimeter setting not received, use Mansfield altimeter setting: increase all MDA 100 feet and visibility Cat C 3/8 SM.

MISSED APPROACH: Climb to 3000 direct LIANG and hold.

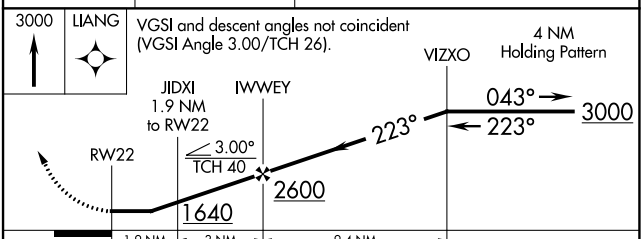
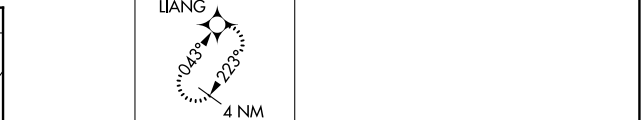
AWOS-3 126.625	CLEVELAND APP CON * 124.2 360.65	UNICOM 122.8 (CTAF)
--------------------------	--	-------------------------------



ELEV 1008	TDZE 1003
-----------	-----------



REIL Rws 4 and 22 **1**
MIRL Rws 4-22 **1**



CATEGORY	A	B	C	D
LP MDA	1380-1 377 (400-1)			NA
LNAV MDA	1500-1	497 (500-1)	1500-1 3/8 497 (500-1 3/8)	NA
C CIRCLING	1500-1 492 (500-1)	1540-1 532 (600-1)	1700-2 692 (700-2)	NA

EC-2, 23 MAR 2023 to 20 APR 2023

EC-2, 23 MAR 2023 to 20 APR 2023