

APP CRS **287°**
 Rwy Idg **N/A**
 TDZE **N/A**
 Apt Elev **304**

RNAV (GPS)-A
 P K AIRPARK (5W4)

NA DME/DME RNP-0.3 NA.
 Procedure NA at night.
 Use Fayetteville altimeter setting.

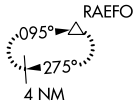
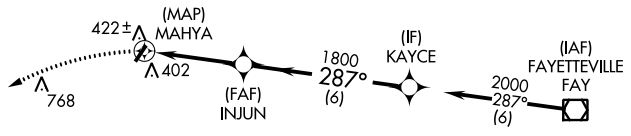
MISSED APPROACH: Climbing left turn to 3000
 direct RAEFO and hold.

FAYETTEVILLE APP CON
127.8 290.25

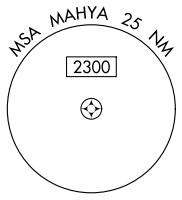
UNICOM
123.0 (CTAF)

SE-2, 23 MAR 2023 to 20 APR 2023

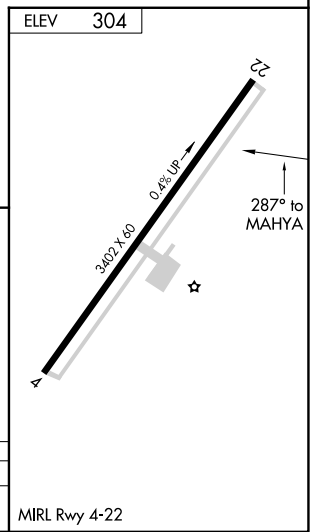
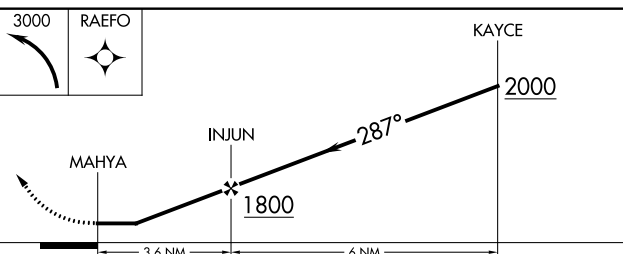
SE-2, 23 MAR 2023 to 20 APR 2023



Procedure NA for arrival on FAY VOR/DME
 airway radials 225 CW 009.



1249 A



CATEGORY	A	B	C	D
CIRCLING	840-1 536 (600-1)	860-1 556 (600-1)	920-1¾ 616 (700-1¾)	NA

MIRL Rwy 4-22