

LOC/DME I-JNX 111.15 Chan 48 (Y)	APP CRS 032°	Rwy Idg 5500 TDZE 147 Apt Elev 164
---	------------------------	---

ILS Z or LOC Z RWY 3

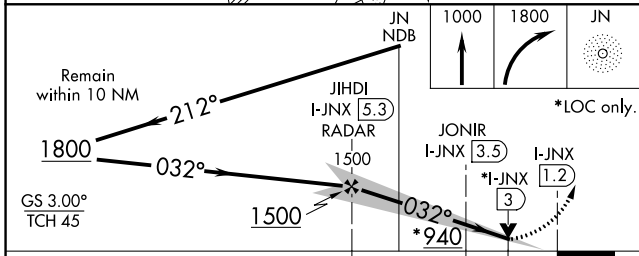
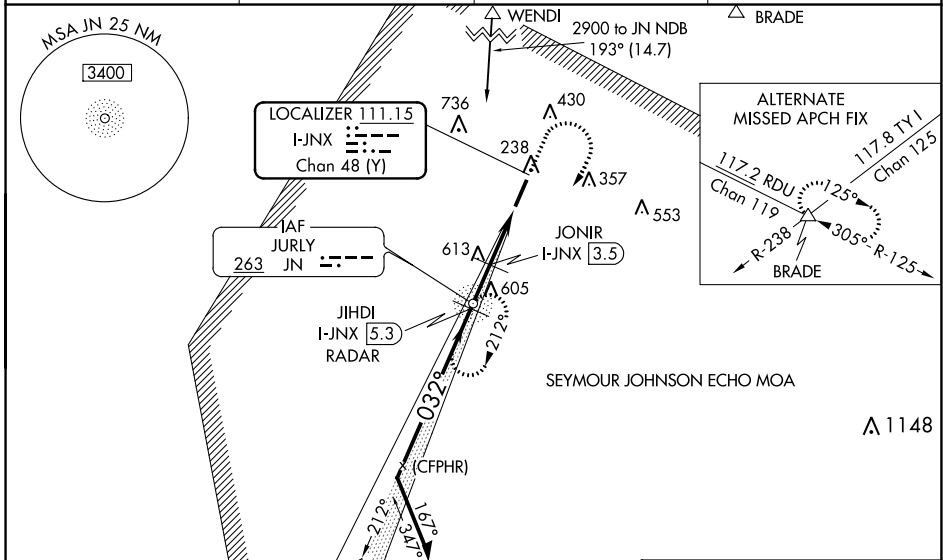
JOHNSTON RGNL (JNX)

ADF required. ADF or RADAR required for procedure entry.
DME or RADAR required for LOC only.

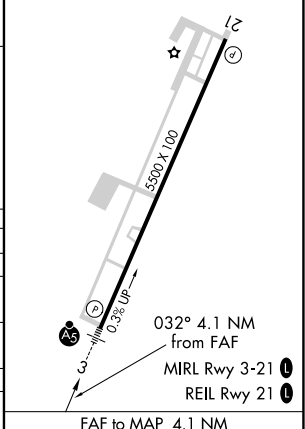
NA VDP NA with Erwin altimeter setting. When local altimeter setting not received, use Erwin altimeter setting: increase DA to 447 feet and all MDAs 60 feet; increase S-LOC 3 Cats C/D and Circling Cat A visibility 1/4 SM; JONIR DME fix minimums increase S-LOC 3 Cats C/D visibility 1/2 SM and Circling Cat C visibility 1/4 SM. For inop ALS, increase S-LOC 3 Cats C/D visibility to 2 1/2 SM; increase JONIR DME fix minimums Cats C/D visibility to 1 3/4 SM. For inop ALS when using Erwin altimeter setting, increase S-ILS all Cats visibility to 1 SM.

MALSR
MISSED APPROACH: Climb to 1000 then climbing right turn to 1800 direct JN NDB and hold.

AWOS-3 120.225	RALEIGH APP CON 125.3 353.675	GCO 135.075	UNICOM 122.725 (CTAF) 0
--------------------------	---	-----------------------	--



ELEV 164	TDZE 147
----------	----------



CATEGORY	A	B	C	D
S-ILS 3	397-1/2 250 (300-1/2)			
S-LOC 3	940-1/2 793 (800-1/2)	940-3/4 793 (800-3/4)	940-1 3/4 776 (800-2 1/2)	793 (800-1 3/4)
CIRCLING	940-1 776 (800-1)	940-1 1/4 776 (800-1 1/4)	940-2 1/2 776 (800-2 1/2)	1100-3 936 (1000-3)
JONIR DME FIX MINIMUMS				
S-LOC 3	780-1/2 633 (700-1/2)	780-1 3/8 633 (700-1 3/8)	780-1 3/8 633 (700-1 3/8)	1100-3 936 (1000-3)
CIRCLING	780-1 616 (700-1)	780-1 3/8 633 (700-1 3/8)	920-2 1/4 756 (800-2 1/4)	1100-3 936 (1000-3)

FAF to MAP 4.1 NM					
Knots	60	90	120	150	180
Min:Sec	4:06	2:44	2:03	1:38	1:22

SE-2, 23 MAR 2023 to 20 APR 2023

SE-2, 23 MAR 2023 to 20 APR 2023