

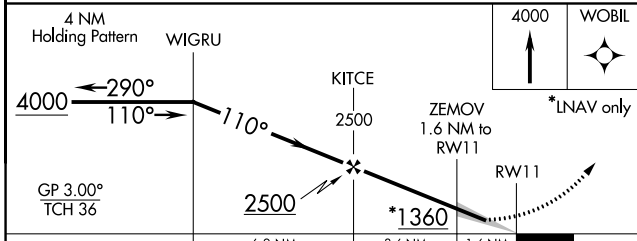
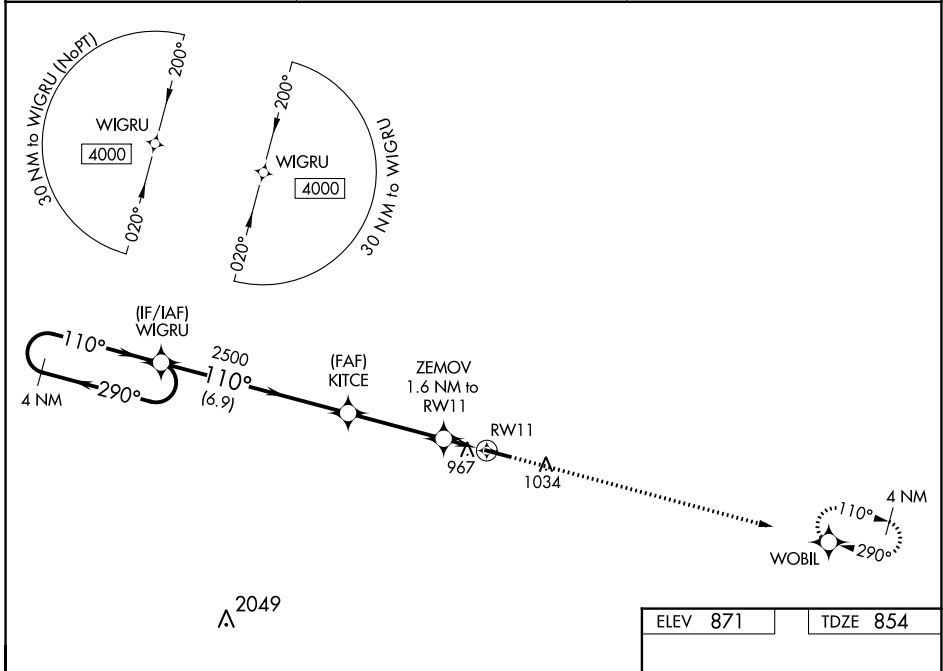
WAAS CH <b>45722</b> <b>W11A</b>	APP CRS <b>110°</b>	Rwy Idg <b>4876</b> TDZE <b>854</b> Apt Elev <b>871</b>
--	------------------------	---

# RNAV (GPS) RWY 11

LEBANON SPRINGFIELD-GEORGE HOERTER FLD (6I2)

RNP APCH.	<p>▼ For uncompensated Baro-VNAV systems, LNAV/VNAV NA below -16°C or above 54°C.                  ▲ When local altimeter setting not received, use Danville altimeter setting and increase all DA 74 feet and all MDA 80 feet. Increase LPV, LNAV/VNAV, and Circling Cat D visibility 1/4 mile and LNAV Cats C/D 3/8 mile. Baro-VNAV NA when using Danville altimeter setting.</p>	MISSED APPROACH: Climb to 4000 direct WOBIL and hold, continue climb-in-hold to 4000.
-----------	---	---

AWOS-3P <b>119.725</b>	INDIANAPOLIS CENTER <b>124.625 371.925</b>	UNICOM <b>122.8 (CTAF) 0</b>
---------------------------	---	---------------------------------



ELEV 871	TDZE 854
----------	----------

<p>110° to RW11</p> <p>1.0% UP → 5001 X 75</p>
<p>MIRL Rwy 11-29 0</p> <p>REIL Rwys 11 and 29 0</p>

CATEGORY	A	B	C	D
LPV DA		1104-1	250 (300-1)	
LNAV/VNAV DA		1159-1 1/8	305 (300-1 1/8)	
LNAV MDA		1220-1	366 (400-1)	
<b>C</b> CIRCLING	1320-1 449 (500-1)	1340-1 469 (500-1)	1360-1 1/2 489 (500-1 1/2)	1500-2 629 (700-2)

# RNAV (GPS) RWY 11

SE-1, 23 MAR 2023 to 20 APR 2023

SE-1, 23 MAR 2023 to 20 APR 2023