

VOR/DME EWO 110.8 Chan 45	APP CRS 088°	Rwy Idg 4876 TDZE 854 Apt Elev 871
--	------------------------	---

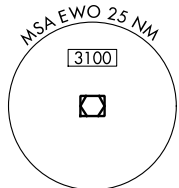
VOR/DME RWY 11

LEBANON SPRINGFIELD-GEORGE HOERTER FLD (6I2)

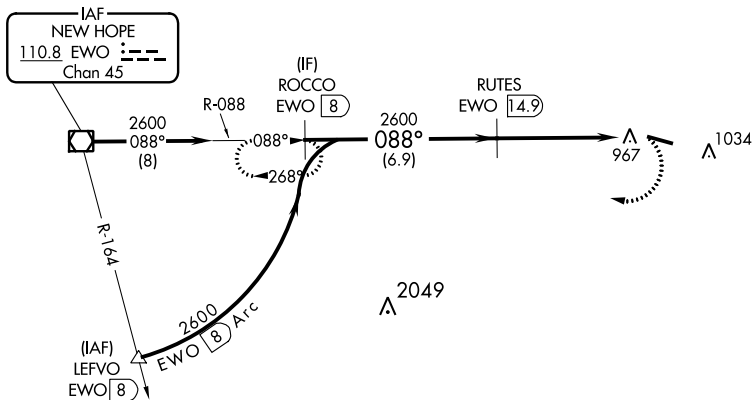
NA When local altimeter setting not received, use Danville altimeter setting and increase all MDA 80 feet and increase Cat C and D visibility ¼ mile. Helicopter visibility reduction below ¾ SM NA.

MISSED APPROACH: Climbing right turn to 4000 on EWO VOR/DME R-088 to ROCCO/EWO 8 DME and hold.

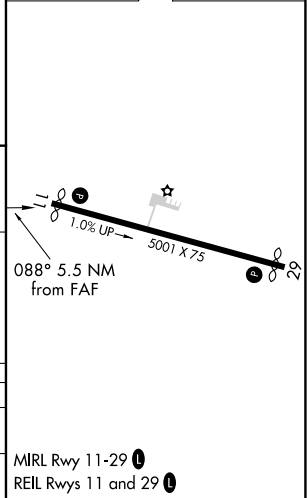
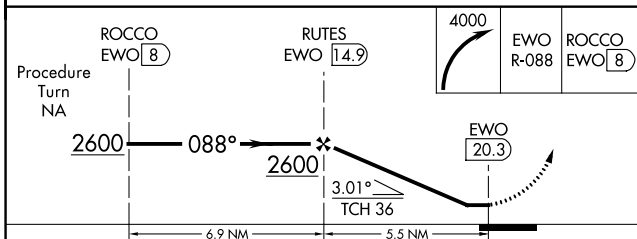
AWOS-3P 119.725	INDIANAPOLIS CENTER 124.625 371.925	UNICOM 122.8 (CTAF) 0
---------------------------	---	---------------------------------



Procedure NA for arrivals at EWO VOR/DME on V178 westbound.



ELEV 871	TDZE 854
----------	----------



CATEGORY	A	B	C	D
S-11	1300-1	446 (500-1)	1300-1 3/8	446 (500-1 3/8)
CIRCLING	1460-1 589 (600-1)	1460-1 1/4 589 (600-1 1/4)	1460-1 1/2 589 (600-1 1/2)	1500-2 629 (700-2)

MRL Rwy 11-29 0
REL Rws 11 and 29 0

SE-1, 23 MAR 2023 to 20 APR 2023

SE-1, 23 MAR 2023 to 20 APR 2023