

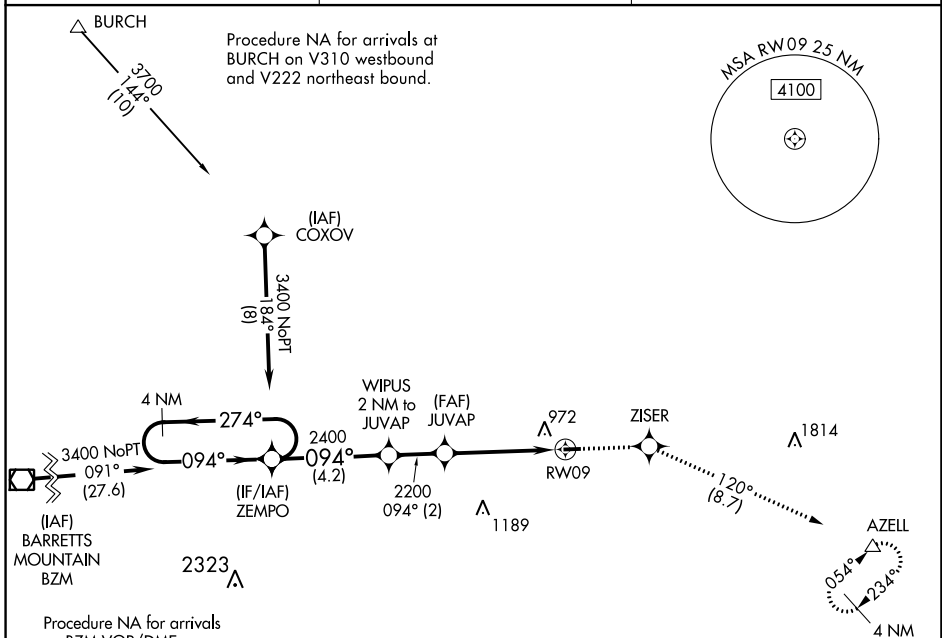
APP CRS	Rwy Idg	<b>2943</b>
<b>094°</b>	TDZE	<b>818</b>
	Apt Elev	<b>818</b>

# RNAV (GPS) RWY 9

TWIN LAKES (8A7)

RNP APCH.	<p>Use Davidson County altimeter setting; when not received, use Smith Reynolds altimeter setting and increase all MDA 40 feet. Procedure NA at night. Rwy 9 helicopter visibility reduction below 1 SM NA.</p>	<p>MISSED APPROACH: Climb to 3000 direct ZISER and on track 120° to AZELL and hold.</p>
-----------	---	---

EXX AWOS-3 <b>119.825</b>	GREENSBORO APP CON <b>124.35 269.225</b>	UNICOM <b>122.7 (CTAF)</b>
------------------------------	---	-------------------------------



ELEV	<b>818</b>	TDZE	<b>818</b>
------	------------	------	------------

4 NM Holding Pattern	ZEMPO	Visual Segment - Obstacles	3000	ZISER	tr 120°	AZELL
3400	274°	094°	094°	2400	2200	RW09
4.2 NM	2 NM	4.3 NM				
CATEGORY	A	B	C	D		
LNVA MDA	1320-1	502 (600-1)	NA	NA		
CIRCLING	1380-1 562 (600-1)	1400-1 582 (600-1)	NA	NA		
	IIRL Rwy 9-27					

SE-2, 23 MAR 2023 to 20 APR 2023

SE-2, 23 MAR 2023 to 20 APR 2023