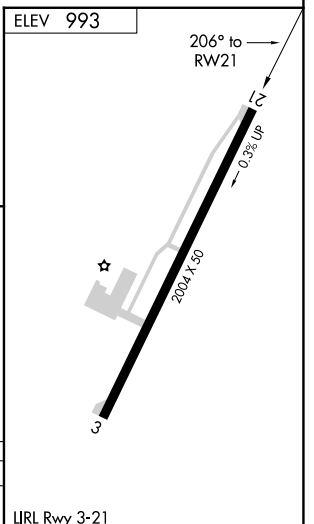
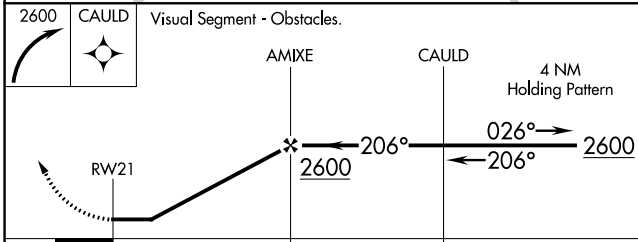
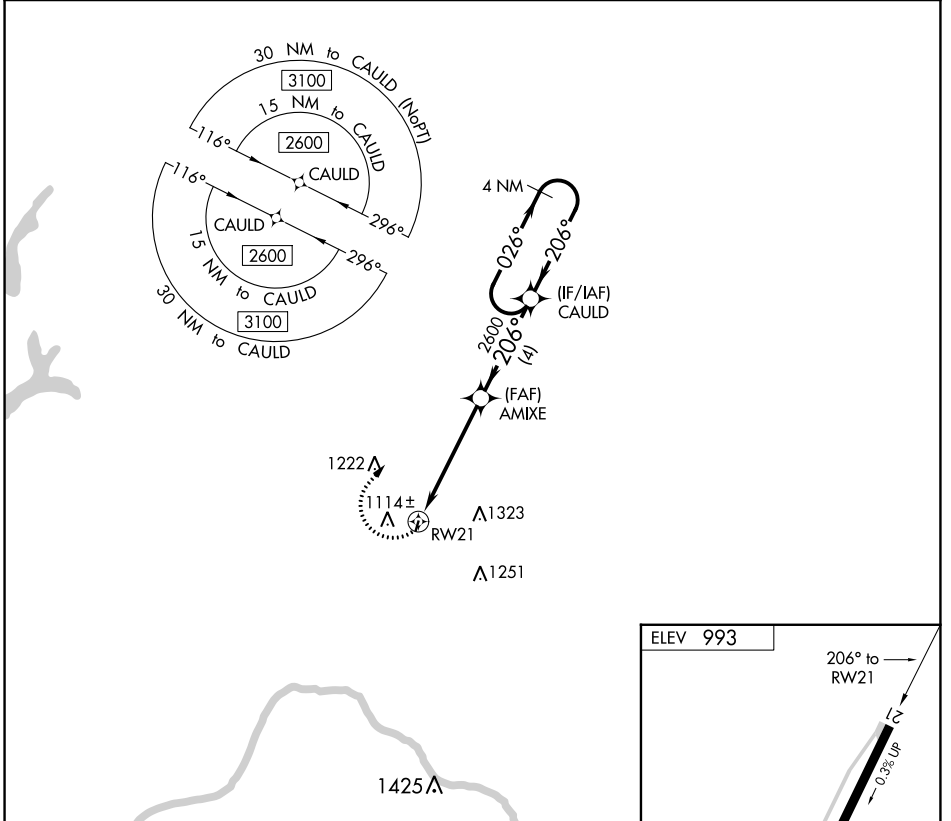


APP CRS 206°	Rwy Idg TDZE Apt Elev	N/A N/A 993
------------------------	-----------------------------	----------------------------------------

RNAV (GPS)-B

EXCELSIOR SPRINGS MEML (3E)X

<p>⚠ NA Use Charles B Wheeler Downtown altimeter setting. DME/DME RNP-0.3 NA. Procedure NA at night. Helicopter visibility reduction below 1 SM NA.</p>	<p>MISSED APPROACH: Climbing right turn to 2600 direct CAULD and hold.</p>
<p>KANSAS CITY APP CON 118.4 307.35</p>	<p>UNICOM 122.7 (CTAF)</p>



CATEGORY	A	B	C	D
C CIRCLING	1660-1 667 (700-1)		NA	

IURL Rwy 3-21

NC-3, 23 MAR 2023 to 20 APR 2023

NC-3, 23 MAR 2023 to 20 APR 2023