


LOC/DME I-GAO 109.1 Chan 28	APP CRS 359°	Rwy Idg 6500 TDZE -2 Apt Elev 0
--	------------------------	--

ILS or LOC RWY 36

SOUTH LAFOURCHE LEONARD MILLER JR (GAO)

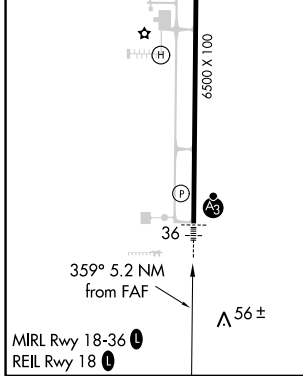
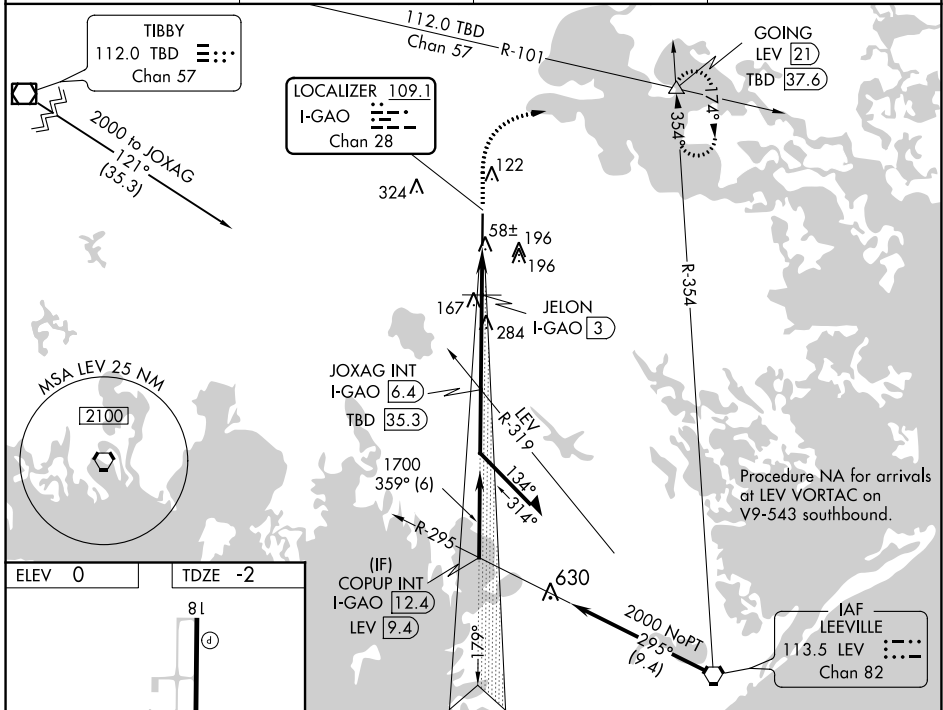
DME required.

SSALR



MISSED APPROACH: Climb to 1200, then climbing right turn to 2000 on heading 050° and TBD VOR/DME R-101 to GOING INT/LEV 21 DME and hold.

AWOS-3PT 118.175	NEW ORLEANS APP CON 120.85 256.9	CLNC DEL 120.85	UNICOM 123.0 (CTAF) 0
----------------------------	--	---------------------------	---------------------------------



	1200	2000	TBD R-101	GOING	JOXAG INT I-GAO [6.4]	Remain within 10 NM
	↑	hdg 050°		△		
*LOC only.	*I-GAO [2.1]	JELON I-GAO [3]	1700	179°	2000	
	I-GAO [1.2]		620*	359°	1700	GS 3.00° TCH 51
	0.9 NM	0.9 NM	3.4 NM			
CATEGORY	A	B	C	D		
S-ILS 36		198-1/2	200 (200-1/2)			
S-LOC 36		320-1/2	322 (400-1/2)			
CIRCLING	440-1 440 (500-1)	560-1 560 (600-1)	640-1 3/4 640 (700-1 3/4)	640-2 640 (700-2)		

SC-4, 23 MAR 2023 to 20 APR 2023

SC-4, 23 MAR 2023 to 20 APR 2023