

WAAS CH 82336 W33A	APP CRS 333°	Rwy Idg 2630 TDZE 147 Apt Elev 147
--	------------------------	---

RNAV (GPS) RWY 33

KINGSTON-ULSTER (20N)

RNP APCH

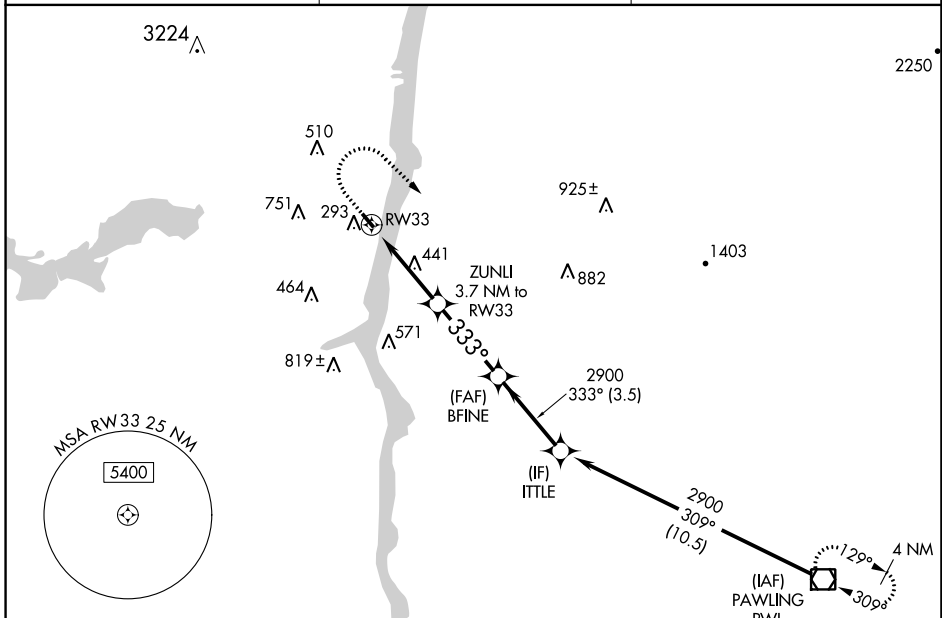
Use Hudson altimeter setting. When not received, use Newburgh altimeter setting and increase all MDA 60 feet. Baro-VNAV NA. Rwy 33 helicopter visibility reduction below 1 SM NA. Straight-in Rwy 33 at night operational VGSI required, remain on or above VGSI glidepath until threshold. Circling Rwy 15 NA at night.

MISSED APPROACH: Climb to 600, then climbing right turn to 3000 direct PWL VOR/DME and hold.

NEW YORK APP CON
132.75 363.1

UNICOM
122.8 (CTAF)

123.3



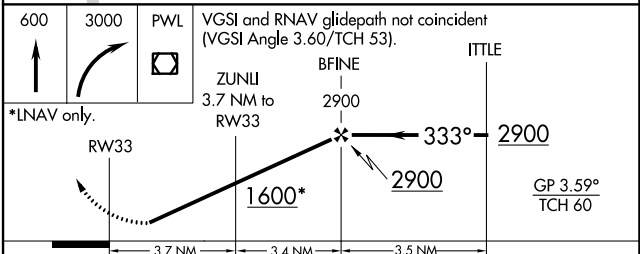
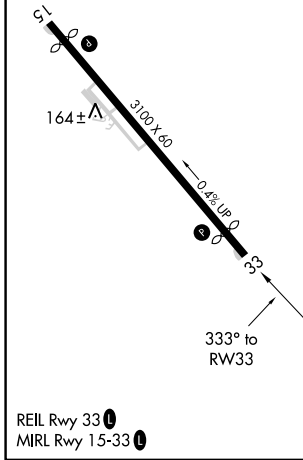
NE-2, 23 MAR 2023 to 20 APR 2023

NE-2, 23 MAR 2023 to 20 APR 2023

ELEV 147	D	TDZE 147
----------	----------	----------

△1999

Procedure NA for arrivals on PWL VOR/DME airway radials 250 CW 354.



CATEGORY	A	B	C	D
LPV DA	499-1	352 (400-1)		NA
LNAV/VNAV DA	635-1 $\frac{3}{8}$	489 (500-1 $\frac{3}{8}$)		NA
LNAV MDA	880-1 733 (800-1)	880-1 $\frac{1}{4}$ 733 (800-1 $\frac{1}{4}$)		NA
C CIRCLING	880-1 733 (800-1)	960-1 $\frac{1}{4}$ 813 (900-1 $\frac{1}{4}$)		NA