

APP CRS	Rwy Idg	<b>4404</b>
<b>172°</b>	TDZE	<b>3454</b>
	Apt Elev	<b>3454</b>

# RNAV (GPS) RWY 17

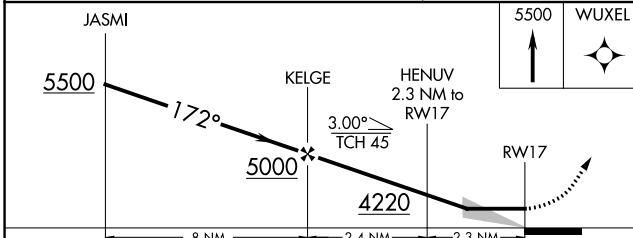
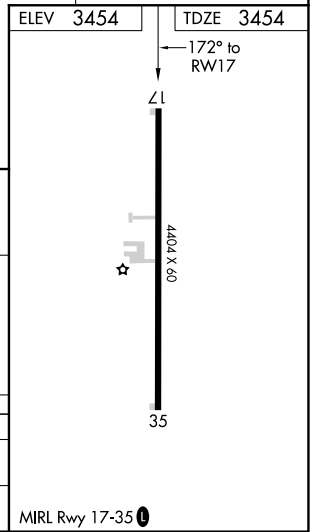
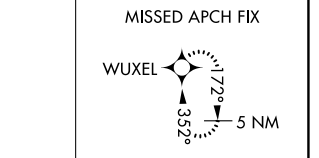
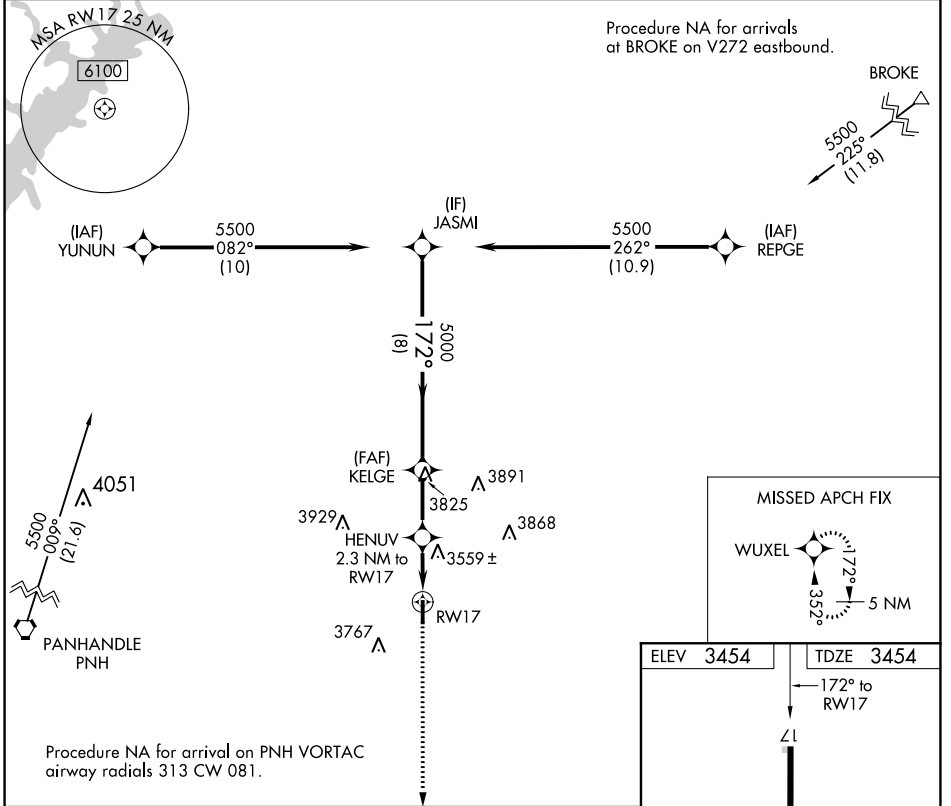
PANHANDLE-CARSON COUNTY (T45)

RNP APCH - GPS.

**NA** Use Rick Husband Amarillo Intl altimeter setting; when not received, use Borger altimeter setting and increase all MDA 40 feet.

MISSED APPROACH: Climb to 5500 direct WUXEL and hold.

AMA ASOS <b>118.85</b>	AMARILLO APP CON* <b>119.5 307.0</b>	UNICOM <b>122.7</b> (CTAF)	<b>123.5</b> <b>0</b>
---------------------------	---	-------------------------------	-----------------------



CATEGORY	A	B	C	D
LNAV MDA	3900-1	446 (500-1)	3900-1 $\frac{1}{8}$ 446 (500-1 $\frac{1}{8}$ )	NA
<b>C</b> CIRCLING	4140-1	686 (700-1)	4140-2 686 (700-2)	NA

MIRL Rwy 17-35 **0**

SC-2, 23 MAR 2023 to 20 APR 2023

SC-2, 23 MAR 2023 to 20 APR 2023