

WAAS CH 78217 W31A	APP CRS 307°	Rwy Idg TDZE 1675 Apt Elev 1681	3700
--	------------------------	---	-------------

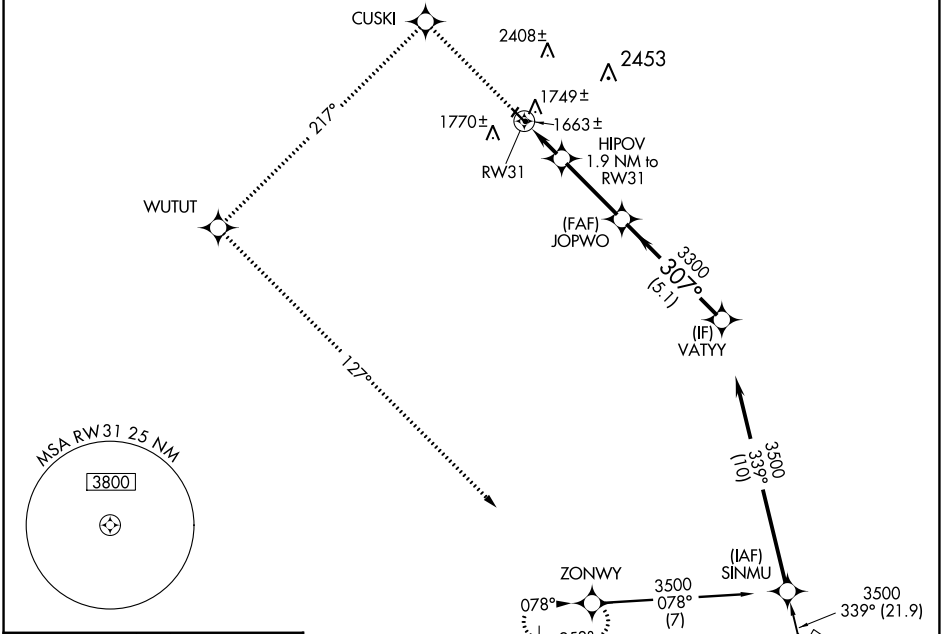
RNAV (GPS) RWY 31

BOTTINEAU MUNI (D09)

Baro-VNAV NA. DME/DME RNP-0.3 NA. Visibility reduction by helicopters NA. Use Minot Air Force Base altimeter setting, when not received; use Devils Lake altimeter setting and increase all DA/MDA 100 feet. Increase LPV, LNAV/VNAV Cats A/B and Circling Cat B visibility 1/4 mile.

MISSED APPROACH: Climb to 3900 direct CUSKI and left turn on track 217° to WUTUT and left turn on track 127° to ZONWY and hold.

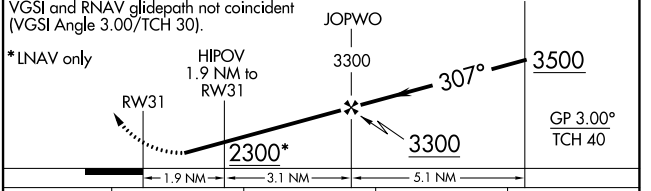
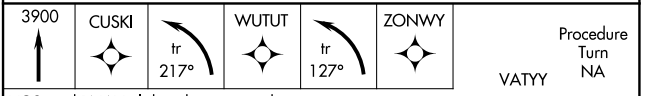
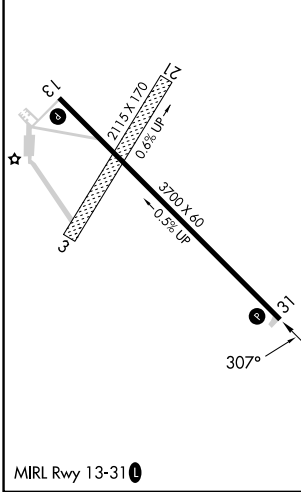
AWOS-3PT 118.25	MINOT APP CON * 119.6 363.8	UNICOM 122.8 (CTAF) 0
---------------------------	---------------------------------------	---------------------------------



NC-1, 23 MAR 2023 to 20 APR 2023

NC-1, 23 MAR 2023 to 20 APR 2023

ELEV 1681	TDZE 1675
-----------	-----------



CATEGORY	A	B	C	D
LPV DA	2051-1½	376 (400-1½)		NA
LNAV/VNAV DA	2125-1¾	450 (500-1¾)		NA
LNAV MDA	2120-1	445 (500-1)		NA
CIRCLING	2360-1 679 (700-1)	2560-1¼ 879 (900-1¼)		NA