

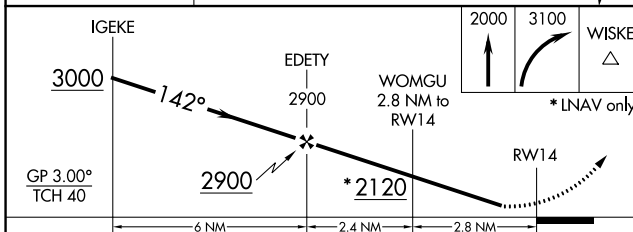
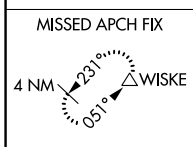
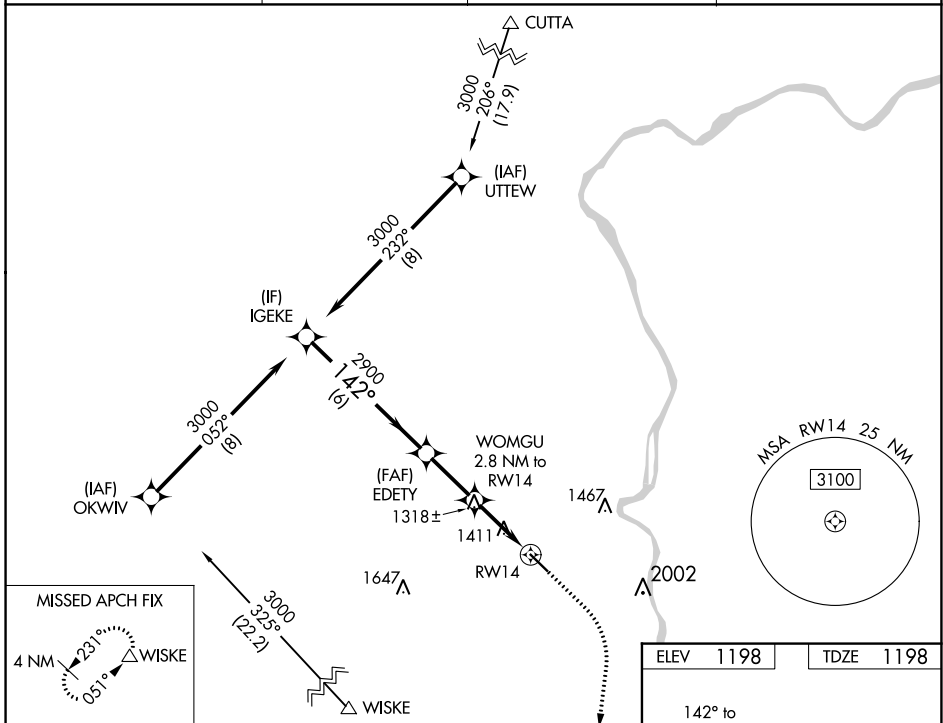
WAAS <b>CH 66039</b> <b>W14A</b>	APP CRS <b>142°</b>	Rwy Idg TDZE Apt Elev	<b>5001</b> <b>1198</b> <b>1198</b>
--	------------------------	-----------------------------	---

# RNAV (GPS) RWY 14

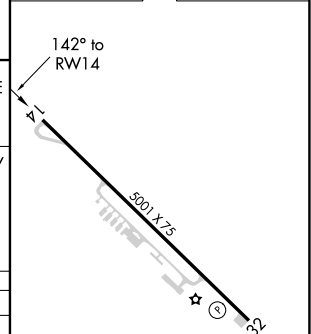
GEARY A BATES/JEFFERSON COUNTY AIRPARK (2G2)

RNP APCH.	MISSED APPROACH: Climb to 2000 then climbing right turn to 3100 direct WISKE and hold.
<b>▽</b> Rwy 14 helicopter visibility reduction below 3/4 SM NA. Baro-VNAV NA when using Wheeling altimeter setting. For uncompensated Baro-VNAV systems, LNAV/VNAV NA below -17°C or above 54°C. When local altimeter setting not received, use Wheeling altimeter setting.	

AWOS-3 <b>121.625</b>	HLG ASOS <b>127.375</b>	PITTSBURGH APP CON <b>124.75 338.2</b>	UNICOM <b>122.8 (CTAF) 0</b>
--------------------------	----------------------------	---	---------------------------------



ELEV 1198	TDZE 1198
-----------	-----------



CATEGORY	A	B	C	D
LPV DA	1475-1 277 (300-1)			NA
LNAV/VNAV DA	1799-1 3/4 601 (700-1 3/4)			NA
LNAV MDA	1740-1	542 (600-1)	1740-1 5/8 542 (600-1 5/8)	NA
<b>C</b> CIRCLING	1800-1 602 (700-1)	1980-1 782 (800-1)	1980-2 1/4 782 (800-2 1/4)	NA

REIL Rwy 14 and 32 **0**  
MIRL Rwy 14-32 **0**

# RNAV (GPS) RWY 14

EC-2, 23 MAR 2023 to 20 APR 2023

EC-2, 23 MAR 2023 to 20 APR 2023