

WAAS CH <b>86631</b> <b>W25A</b>	APP CRS <b>248°</b>	Rwy Idg TDZE Apt Elev	<b>5001</b> <b>643</b> <b>653</b>
--	------------------------	-----------------------------	---

# RNAV (GPS) RWY 25

MARION-CRITTENDEN COUNTY JAMES C JOHNSON RGNL (GDA)

RNP APCH - GPS.

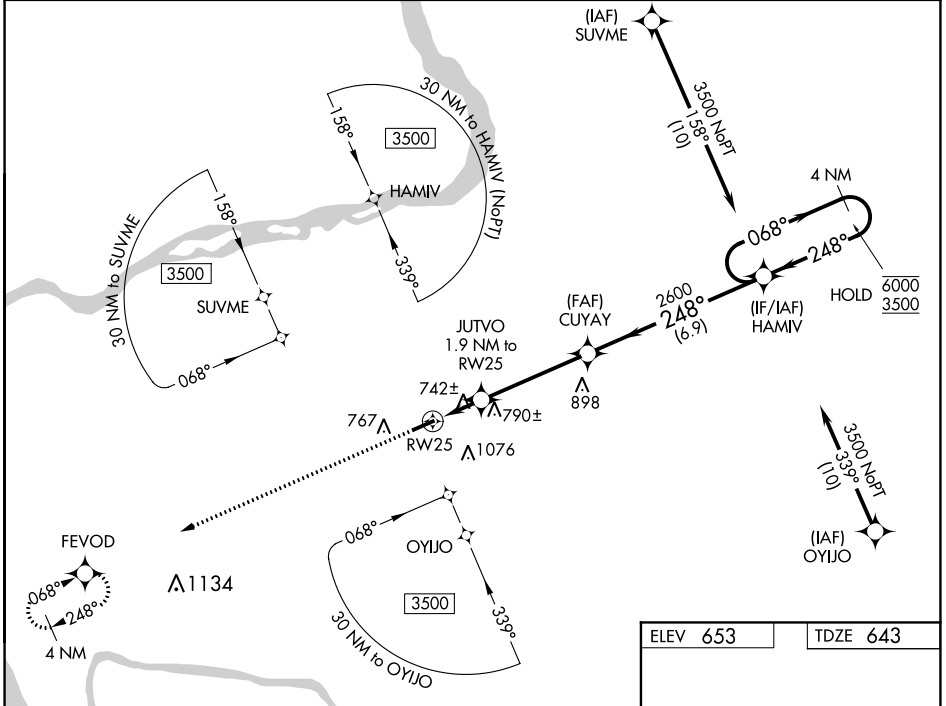
**⚠** Circling Rwy 7 NA at night. For uncompensated Baro-VNAV systems, LNAV/VNAV NA below -1.6°C or above 54°C.

**MISSED APPROACH:**  
Climb to 3500 direct FEVOD and hold.

AWOS-3P  
**118.15**

MEMPHIS CENTER  
**133.65 292.15**

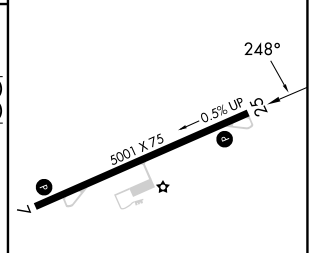
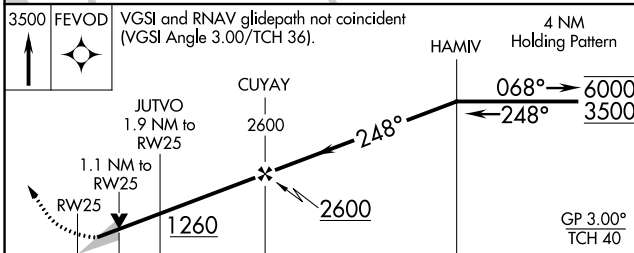
CTAF  
**122.9**



SE-1, 23 MAR 2023 to 20 APR 2023

SE-1, 23 MAR 2023 to 20 APR 2023

ELEV 653	TDZE 643
----------	----------



CATEGORY	A	B	C	D
LPV DA		893-1	250 (300-1)	
LNAV/VNAV DA		945-1	302 (300-1)	
LNAV MDA		1000-1	357 (400-1)	
<b>CIRCLING</b>	1180-1 527 (600-1)	1360-1 707 (800-1)	1380-2 727 (800-2)	1380-2 1/4 727 (800-2 1/4)

MIRL Rwy 7-25 **Ⓢ**  
REIL Rwy 7 and 25 **Ⓢ**