

WAAS CH 90531 W07A	APP CRS 068°	Rwy Idg TDZE 653 Apt Elev 653	5001 653 653
----------------------------------------	------------------------	---------------------------------------------------	-----------------------------------------

RNAV (GPS) RWY 7

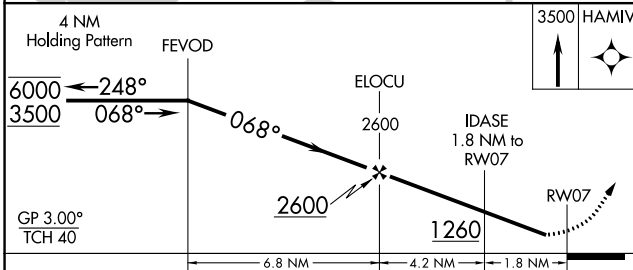
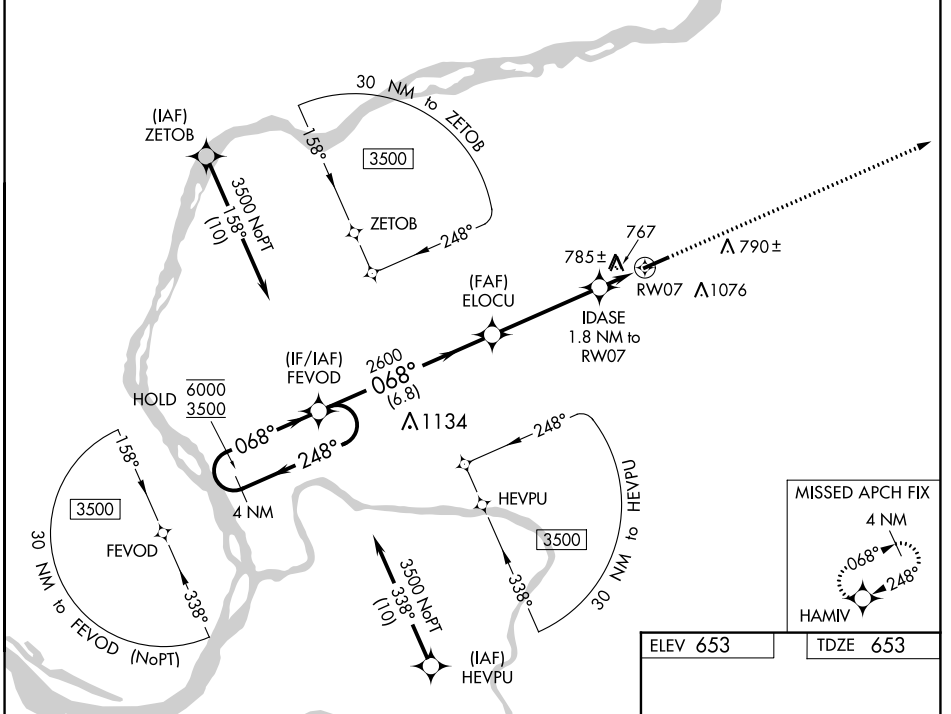
MARION-CRITTENDEN COUNTY JAMES C JOHNSON RGNL (GDA)

RNP APCH - GPS.

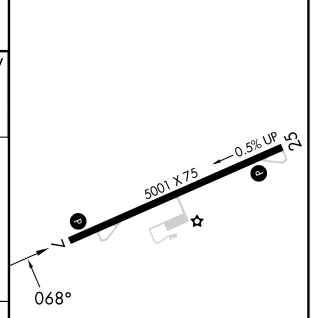
⚠ Rwy 7 helicopter visibility reduction below 1 SM NA.
⚠ For uncompensated Baro-VNAV systems, LNAV/VNAV NA below -16°C or above 54°C.
 Straight-in Rwy 7 NA at night, Circling Rwy 7 NA at night.

MISSED APPROACH:
 Climb to 3500 direct
 HAMIV and hold.

AWOS-3P 118.15	MEMPHIS CENTER 133.65 292.15	CTAF 122.9
--------------------------	----------------------------------------	----------------------



ELEV 653	TDZE 653
----------	----------



CATEGORY	A	B	C	D
LPV DA		903-1	250 (300-1)	
LNAV/VNAV DA		1132-1 $\frac{3}{8}$	479 (500-1 $\frac{1}{2}$)	
LNAV MDA	1080-1	427 (500-1)	1080-1 $\frac{1}{4}$	427 (500-1 $\frac{1}{4}$)
C CIRCLING	1180-1 527 (600-1)	1360-1 707 (800-1)	1380-2 727 (800-2)	1380-2 $\frac{1}{4}$ 727 (800-2 $\frac{1}{4}$)

MIRL Rwy 7-25 **1**
 REIL Rwy 7 and 25 **1**

SE-1, 23 MAR 2023 to 20 APR 2023

SE-1, 23 MAR 2023 to 20 APR 2023