

WAAS CH <b>78301</b> <b>W13A</b>	APP CRS <b>133°</b>	Rwy Idg <b>4999</b> TDZE <b>18</b> Apt Elev <b>18</b>
--	------------------------	---

# RNAV (GPS) RWY 13

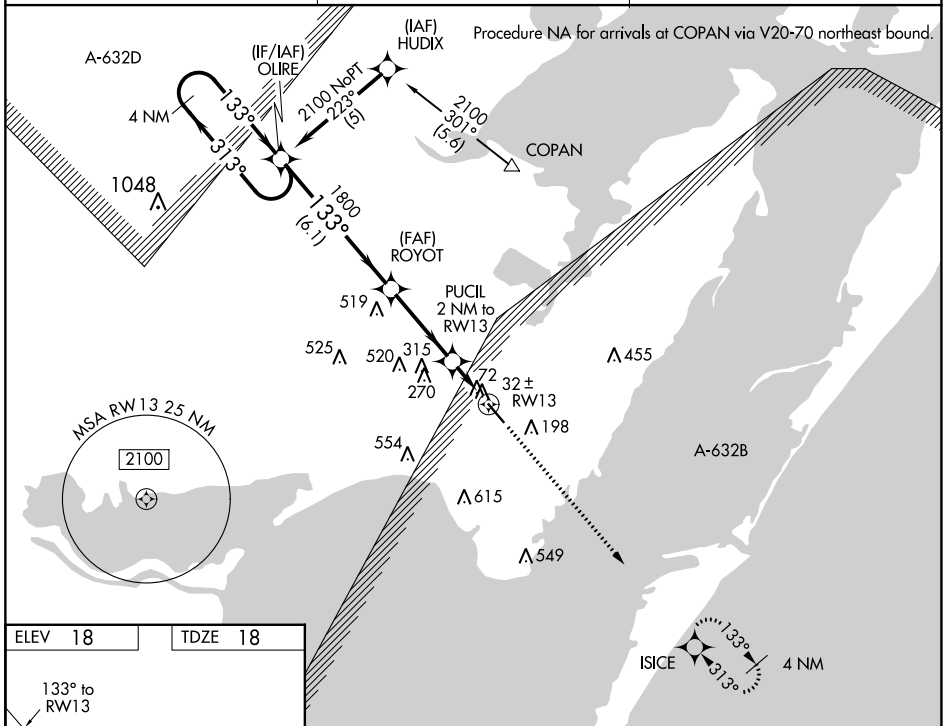
MCCAMPBELL-PORTER (TFP)

RNP APCH-GPS.

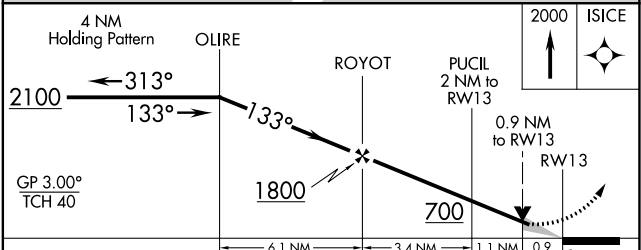
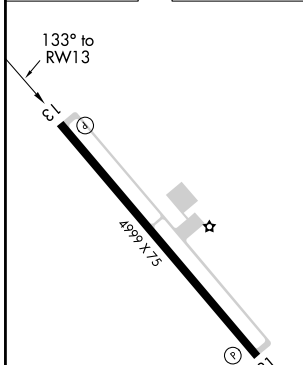
**⚠** Baro-VNAV NA when using Mustang Beach altimeter setting. For uncompensated Baro-VNAV systems, LNAV/VNAV NA below -15°C or above 49°C. When local altimeter setting not received, use Mustang Beach altimeter setting: increase LPV DA to 292 feet; increase LNAV/VNAV DA to 310 feet; increase all MDAs 40 feet and Circling visibility Cat C ¼ SM. VDP NA when using Mustang Beach altimeter setting.

**MISSED APPROACH:**  
Climb to 2000 direct ISICE and hold.

AWOS-3 <b>118.775</b>	CORPUS APP CON <b>120.9 348.725</b>	UNICOM <b>122.7 (CTAF) 0</b>
--------------------------	--	---------------------------------



ELEV 18	TDZE 18
---------	---------



CATEGORY	A	B	C	D
LPV DA		268-¾	250 (300-¾)	
LNAV/VNAV DA		286-⅞	268 (300-⅞)	
LNAV MDA		340-1	322 (400-1)	
CIRCLING	520-1	502 (600-1)	860-2½ 842 (900-2½)	980-3 962 (1000-3)

MIRL Rwy 13-31 0  
REIL Rwy 13 and 31

SC-3, 23 MAR 2023 to 20 APR 2023

SC-3, 23 MAR 2023 to 20 APR 2023