

| | | |
|--|------------------------|---|
| WAAS CH 86334 W03A | APP CRS 033° | Rwy Idg 5001 TDZE 3684 Apt Elev 3705 |
|--|------------------------|---|

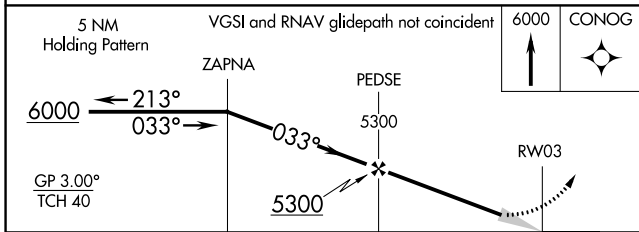
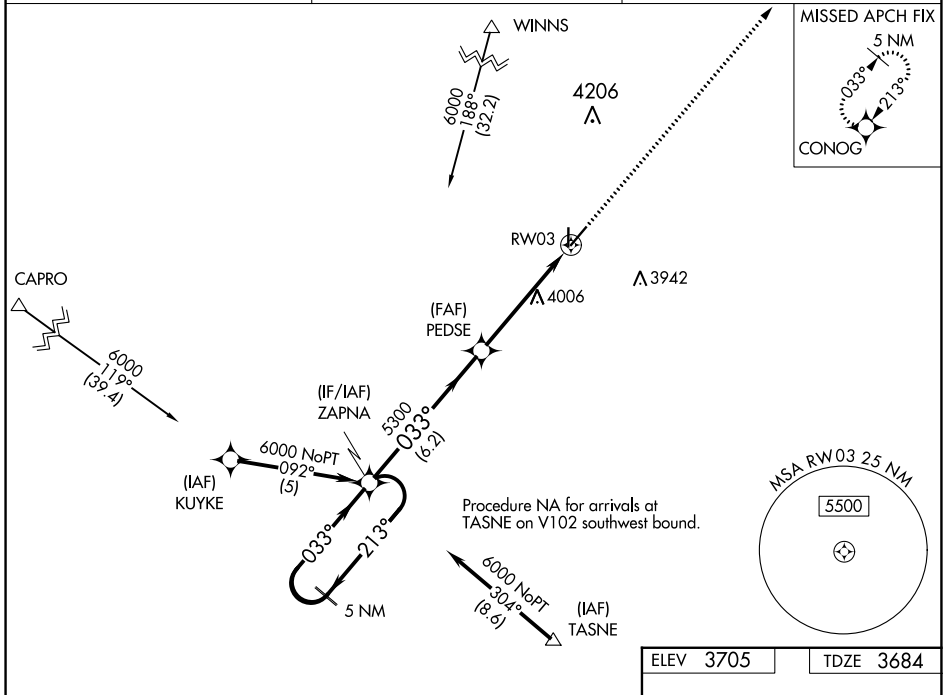
RNAV (GPS) RWY 3

YOAKUM COUNTY (F98)

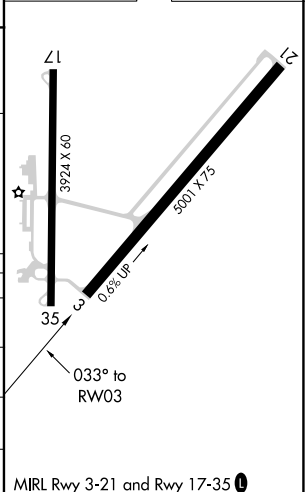
Baro-VNAV NA. DME/DME RNP-0.3 NA. Use Hobbs altimeter setting, when not received, use Seminole altimeter setting and increase all DA 41 feet and all MDA 60 feet, increase LPV Cats A/B visibility to 1/4 mile, LNAV/VNAV Cat A/B to 1/2 mile, LNAV and Circling Cat B to 1/4 mile.

MISSED APPROACH: Climb to 6000 direct CONOG and hold.

| | | |
|-----------------------------|--|----------------------|
| HOB AWOS-3 119.75 | FORT WORTH CENTER 132.6 269.05 | CTAF 122.9 |
|-----------------------------|--|----------------------|



| | |
|-----------|-----------|
| ELEV 3705 | TDZE 3684 |
|-----------|-----------|



| CATEGORY | A | B | C | D |
|-----------------|------------|-----------------|---|----|
| LPV DA | 4026-1 1/8 | 342 (400-1 1/8) | | NA |
| LNAV/VNAV DA | 4073-1 3/8 | 389 (400-1 3/8) | | NA |
| LNAV MDA | 4400-1 | 716 (700-1) | | NA |
| CIRCLING | 4400-1 | 695 (700-1) | | NA |

SC-2, 23 MAR 2023 to 20 APR 2023

SC-2, 23 MAR 2023 to 20 APR 2023