

LISBON, NORTH DAKOTA

AL-10400 (FAA)

19339

WAAS CH 93939 W32A	APP CRS 326°	Rwy Idg 3397 TDZE 1232 Apt Elev 1240
--	------------------------	---

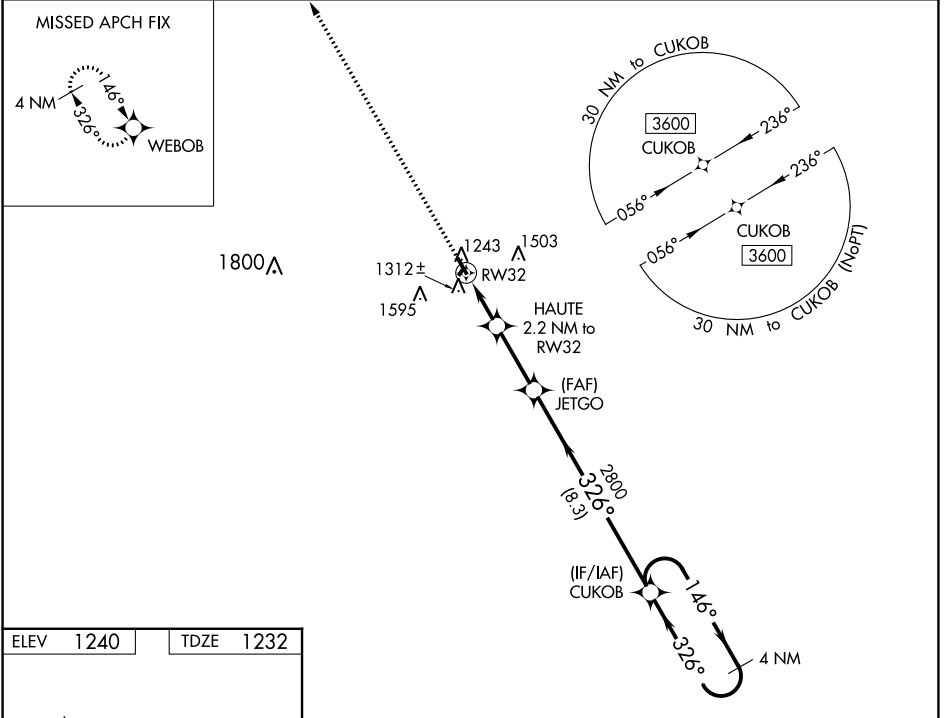
RNAV (GPS) RWY 32

LISBON MUNI (6L3)

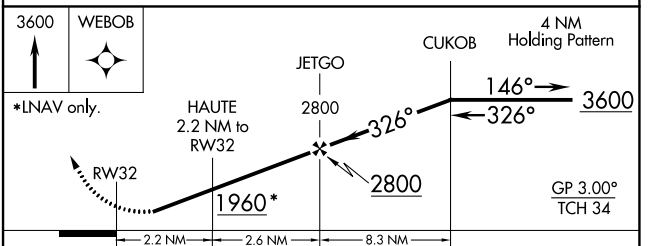
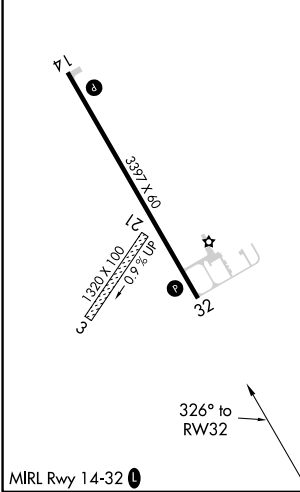
⚠ Circling NA to Rwy 3 and 21. Baro-VNAV NA. Circling Rwy 14 NA at night. DME/DME RNP-0.3 NA. Rwy 32 helicopter visibility reduction below 3/4 SM NA. Use Gwinner altimeter setting; when not received, use Valley City altimeter setting and increase all MDA 60 feet.

⚠ NA MISSED APPROACH: Climb to 3600 direct WEBOB and hold.

GWR AWOS-3 118.325	MINNEAPOLIS CENTER 127.35 278.3	CTAF 122.90
------------------------------	---	-----------------------



ELEV 1240	TDZE 1232
-----------	-----------



CATEGORY	A	B	C	D
LPV DA	1519-1	287 (300-1)		NA
LNAV/VNAV DA	1519-1	287 (300-1)		NA
LNAV MDA	1600-1	368 (400-1)		NA
CIRCLING	1680-1 440 (500-1)	1940-1 700 (700-1)		NA

LISBON, NORTH DAKOTA
Orig 05JAN17

46°27'N-97°44'W

RNAV (GPS) RWY 32

LISBON MUNI (6L3)

NC-1, 23 MAR 2023 to 20 APR 2023

NC-1, 23 MAR 2023 to 20 APR 2023