

MOSINEE

CENTRAL WISCONSIN (CWA)(KCWA) 3 SE UTC-6(-5DT) N44°46.66' W89°40.01'

GREEN BAY
H-2K, L-14J
IAP, AD

1277 B ARFF Index—See Remarks NOTAM FILE CWA
RWY 08-26: H7648X150 (CONC-GRVD) S-120, D-227, 2S-175,
 2D-409 PCN 67 R/B/W/T HIRL

RWY 08: MALSR. Bldg.

RWY 26: REIL. PAPI(P4L)—GA 3.0° TCH 45'.

RWY 17-35: H6501X150 (CONC-GRVD) S-120, D-225, 2S-133,
 2D-485, 2D/2D2-980 PCN 65 R/A/W/T HIRL 0.8% up N

RWY 17: REIL. PAPI(P4L)—GA 3.0° TCH 45'. Stack.

RWY 35: MALSR. PAPI(P4L)—GA 3.0° TCH 50'.

RUNWAY DECLARED DISTANCE INFORMATION

RWY 08: TORA-7647 TODA-7647 ASDA-7647 LDA-7647

RWY 17-35: TORA-6501 TODA-6501 ASDA-6501 LDA-6501

RWY 26: TORA-7647 TODA-7647 ASDA-7647 LDA-7647

RWY 35: TORA-6501 TODA-6501 ASDA-6501 LDA-6501

SERVICE: S4 FUEL 100LL, JET A OX1 LGT When ATCT clsd actvt

MALSR Rwy 35; REIL Rwy 17 and 26; HIRL Rwy Rwy
 17-35—CTAF. Rwy 17 26, 35 PAPI opr consly. HIRL Rwy 08-26
 preset low intensity; to increase intensity and actvt—CTAF. Rwy 08
 apch lghts OTS indef. Rwy 26 PAPI unusable byd 6° right of cntrln.

AIRPORT REMARKS: Attended continuously. Rwy 08 and Rwy 17 approach
 ends are closely aligned, verify correct rwy and compass heading prior
 to departure. Class I, ARFF Index A. ARFF Index: 48 hr PPR for unscheduled air carrier ops with more than 30 passenger
 seats; Index C avbl; call amgr 715-693-2147. Twy E north of Twy C is not avbl for air carrier ops; GA and cargo actt rstd
 to less than 100,000 pounds. Lnd fee for actt providing commercial svcs.

AIRPORT MANAGER: 715-693-2147

WEATHER DATA SOURCES: AWOS-3 127.45 (715) 693-1116.

COMMUNICATIONS: CTAF 119.75 ATIS 127.45 UNICOM 122.95

Ⓡ MINNEAPOLIS CENTER APP/DEP CON 124.4

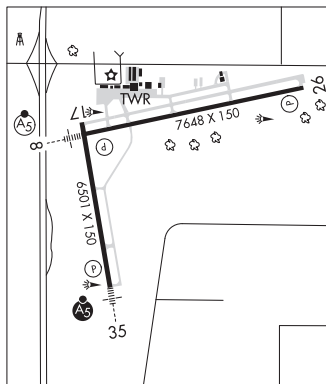
CWA TOWER 119.75 (1200-0400Z) GND CON 121.9

AIRSPACE: CLASS D svc 1200-0400Z; other times CLASS E.

RADIO AIDS TO NAVIGATION: NOTAM FILE JVL.

ILS/DME 110.3 I-CWA Chan 40 Rwy 08. Class IT.

ILS/DME 110.9 I-PHS Chan 46 Rwy 35. Class IE. DME unusable byd 14° right of course. Unmonitored when
 ATCT clsd.



NECEDAH (DAF)(KDAF) 1 NW UTC-6(-5DT) N44°02.01' W90°05.11'

GREEN BAY
L-28G
IAP

919 B NOTAM FILE GRB

RWY 18-36: H2721X60 (ASPH) LIRL 0.3% up S

RWY 18: Trees.

RWY 36: Road.

SERVICE: S2 LGT ACTIVATE LIRL Rwy 18-36—CTAF.

AIRPORT REMARKS: Unattended. During winter months call 608-547-3411 bfr Indg to dtrm status.

AIRPORT MANAGER: 608-547-3411

COMMUNICATIONS: CTAF/UNICOM 122.7

Ⓡ VOLK APP/DEP CON 135.25 (1400-2200Z) Mon-Fri exc holidays; other times ctc)

Ⓡ CHICAGO CENTER APP/DEP CON 125.05

CLEARANCE DELIVERY PHONE: For CD ctc Chicago ARTCC at 630-906-8921.

RADIO AIDS TO NAVIGATION: NOTAM FILE DLL.

DELLS (VH) (H) VORTAC 117.0 DLL Chan 117 N43°33.05' W89°45.82' 331° 32.1 NM to fld. 1023/3E.

VOR unusable:

008°-122° byd 40 NM

103°-114° byd 30 NM blo 17,000'

135°-148° byd 40 NM

165°-290° byd 40 NM

291°-301° byd 108 NM blo 14,500'

291°-301° byd 123 NM

291°-301° byd 40 NM blo 9,000'

302°-312° byd 40 NM blo 18,000'

313°-323° byd 40 NM blo 3,500'

313°-323° byd 66 NM

335°-339° byd 40 NM

MCCOY NDB (MHW) 412 CMY N43°56.27' W90°38.51' 076° 24.8 NM to fld. 971/0E. NOTAM FILE CMY.
 unmonitored when ATCT closed.