

CONCORD MUNI (CON)(KCON) P (ARRG) 2 E UTC-5(-4DT) N43°12.16' W71°30.14'
342 B NOTAM FILE CON

NEW YORK
H-11D, 12K, L-32H
IAP, AD

RWY 17-35: H6005X100 (ASPH) S-43, D-60 HIRL
RWY 17: PAPI(P4L)—GA 3.0° TCH 50'. Thld displd 641'. Tree.
RWY 35: MALSR. VASI(V4L)—GA 3.0° TCH 50'. Trees.
RWY 12-30: H3200X75 (ASPH) S-30 MIRL
RWY 12: Trees.
RWY 30: Trees.

SERVICE: S4 FUEL 100LL, JET A LGT ACTIVATE MALSR Rwy 35,
HIRL Rwy 17-35, MIRL Rwy 12-30—CTAF. **MILITARY—FUEL**
J8(Mil)—PPR (NC-100LL - Avbl H24 with credit card; A - Avbl
1230-2200Z±, OT fone C603-228-2267 and flw prompts.)

AIRPORT REMARKS: Attended 1200-2200Z±, exc Thanksgiving, Christmas,
and New Years Day. Wildlife on and invof arpt. Hwy hel act 1 NM ESE
of arpt 800 ft & blw. Self serve 100LL avbl 24 hrs with credit card.
For Jet A aft hrs call 603-228-2267 & flw prompts. Rwy 35
designated calm wind rwy. Day & ngt VFR hel ops to & fm New
Hampshire State Police hngr. Ops on National Guard twy & ramp
prohibited wo prior cdm due to scty. Mil twy & ramp PCN R/A/W/T. Ops
off paved sfc prohibited due to conservation mgmt acts. Compass
rose calibrated 2014.

AIRPORT MANAGER: 603-228-2267
WEATHER DATA SOURCES: ASOS 132.325 (603) 224-6558.
COMMUNICATIONS: CTAF/UNICOM 122.7

RCO 122.2 (BANGOR RADIO)

Ⓡ BOSTON APP/DEP CON 127.35

CLNC DEL 133.65

CLEARANCE DELIVERY PHONE: For CD ctc Boston Apch at 603-594-5552.

AIRSPACE: CLASS E.

RADIO AIDS TO NAVIGATION: NOTAM FILE CON.

(L) (L) VORW/DME 112.9 CON Chan 76 N43°13.19' W71°34.53' 123° 3.4 NM to fld. 715/15W.

VOR unusable:

022°-032° byd 20 NM blo 8,000'

190°-210° byd 12 NM blo 4,000'

318°-326° byd 30 NM blo 12,000'

DME unusable:

022°-032° byd 20 NM blo 8,000'

082°-110° byd 30 NM blo 5,000'

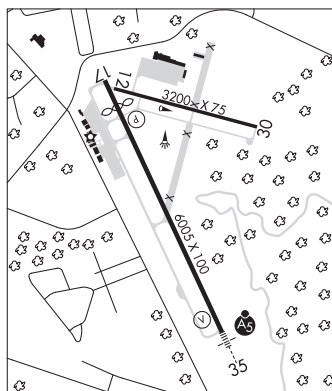
190°-210° byd 12 NM blo 4,000'

290°-300° byd 30 NM blo 7,000'

318°-326° byd 30 NM blo 12,000'

EPSOM NDB (LOM) 216 CO N43°07.13' W71°27.16' 353° 5.5 NM to fld. NDB unusable byd 20 NM.

ILS 108.7 I-CON Rwy 35. Class IA. LOM EPSOM NDB. NDB unusable byd 20 NM.



DEAN MEML (See HAVERHILL on page 149)

DILLANT/HOPKINS (See KEENE on page 150)

EPSOM N43°07.13' W71°27.15' NOTAM FILE CON.

NEW YORK
L-32H, 33D

NDB (MHW/LOM) 216 CO 353° 5.5 NM to Concord Muni. 355/16W.

NDB unusable:

Byd 20 NM

ERROL (ERR)(KERR) 1 NW UTC-5(-4DT) N44°47.53' W71°09.87'

MONTREAL

1248 TPA—2048(800) NOTAM FILE BGR

RWY 15-33: 3600X60 (GRVL) 0.3% up SE

RWY 15: Trees.

AIRPORT REMARKS: Unattended. For arpt information and conditions, call 603-482-3320. Wildlife on and invof arpt. Regular
construction vehicle tfc on roadway at Rwy 33 end. 1:1 clearance slope. Rwy 15-33: Rwy soft in spring. Lrg patches of
grass on rwy.

AIRPORT MANAGER: 603-616-8602

COMMUNICATIONS: CTAF/UNICOM 122.8

CLEARANCE DELIVERY PHONE: For CD ctc Boston ARTCC at 603-879-6859.

HELIPAD H1: H61X61 (ASPH)

HELIPORT REMARKS: ACTIVATE helipad flood lgt and lighted windcone—CTAF.